

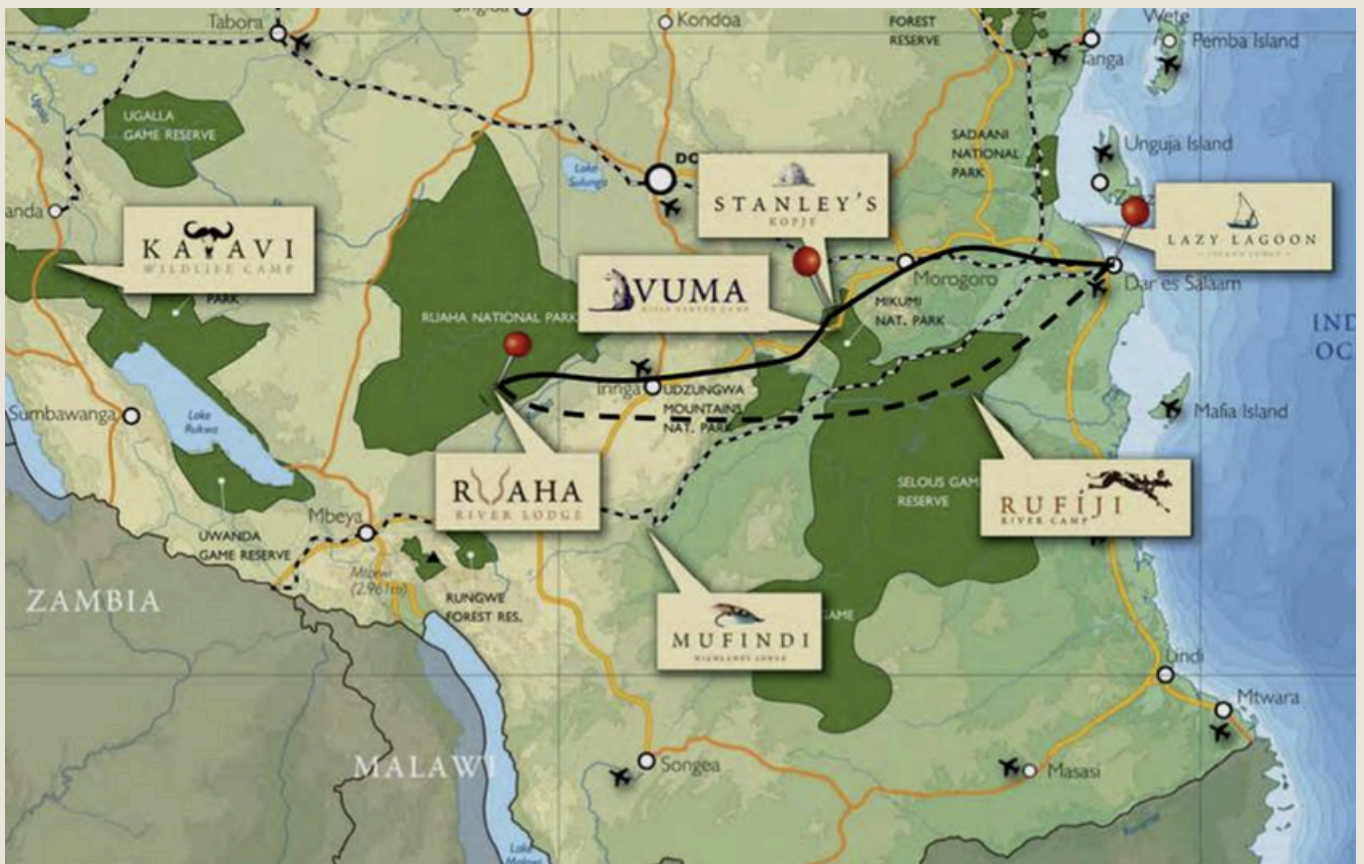


1 WEEK SAFARI

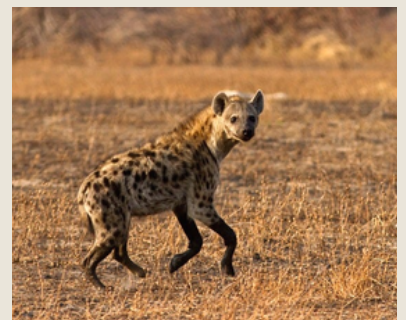
1 Night CBD Hotel - Dar es Salaam

3 Nights Stanley's Kopje — Mikumi National Park

3 Nights Ruaha River Lodge — Ruaha National Park



EXPERIENCE THIS...



DAY 1 | ARRIVAL



On your arrival at Dar es Salaam Airport, you'll be met by a friendly member of Foxes Safari Camps who will escort you to the Dar es Salaam hotel and help you check-in. Whether you'd like to explore the city or get some rest it's up to you, but tomorrow your real Tanzanian adventure begins!



DAY 2 - MIKUMI NATIONAL PARK

Your safari begins with check in at Julius Nyerere International Airport for your Safari Air Link flight to Mikumi National Park.

Flight No 01 (times may vary with schedule requirements)

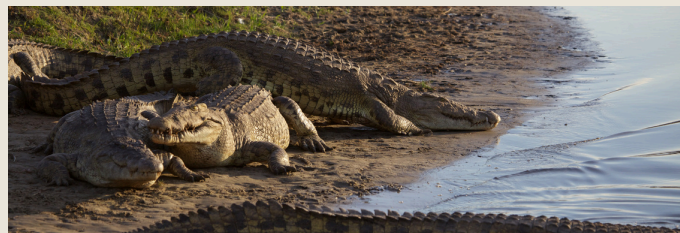
Departure Time: 10:30 Arrival Time 11:55



A guide from Stanley's Kopje will be at the airstrip waiting to greet you and take you on a game drive through the park, slowly winding your way to camp. Your guide will then help you check into Stanley's Kopje.



In the afternoon you will get to go out and explore the national park with a game drive. Your exciting exploration will end back at camp at dusk, in time to freshen up before drinks around the camp fire.



Mikumi National Park nestles between the Uluguru Mountains, the Mikumi Hills and protected land. The result is a plains area with a beautiful orangey light, perfect for photography. The park has a significant variety of wildlife to view, from the lion, leopard and hunting dog to herds of antelope, from the largest Eland down to the smallest DikDik. The landscape is a mix of Miombo woodland, arid bushland, coastal landscape all with the mountains forming a scenic backdrop.

DAY 3 & 4 | VUMA HILLS



During your time staying at Vuma Hills you choose between half-day shared game drives or full-day experiences in Mikumi National Park, with picnic lunch enabling you to explore further afield in this enormous wilderness.

- **Early Morning Game Drives**

Departing at 06:30 with a picnic breakfast, returning at 11:30



- **Morning Game Drives**

Departing after breakfast at 08:30, returning in time for lunch.

- **Afternoon Game Drives**

Departing at 16:00 and returning at dusk, in time for sundowners.



- **Full-Day Game Drives**

Departing after breakfast at 08:30 with a picnic lunch, returning at 16:00 for afternoon tea.

Exclusive Game Drives are also on offer providing you with flexible use of a private vehicle and guide between 06:30 and 18:00.



A day excursion to Udzungwa Mountains National Park, where you can hike up the Sanje Waterfall.

Game vehicles are also on offer providing you with flexible use of a private vehicle and guide between 06:30 and 18:00

DAY 5 | RUAHA NATIONAL PARK

After breakfast embark on a game drive through the national park finishing at Mikumi's airstrip for your onward flight to Ruaha National Park.

Flight No 02 (times may vary with schedule requirements)

Departure Time: 11:55 Arrival Time: 13:00

A Ruaha River Lodge guide will be waiting at the airstrip to greet you and take you on a game drive towards Ruaha River Lodge for check-in.



During your time staying at Ruaha River Lodge choose between half-day shared game drives or full-day with picnic lunch enabling you to get a taste of the true scale of this protected place.

- **Early Morning Game Drives**

Departing at 06:30 with a picnic breakfast, returning at 11:30



- **Morning Game Drives**

Departing after breakfast at 08:30, returning in time for lunch.

- **Afternoon Game Drives**

Departing at 16:00 and returning at dusk, in time for sundowners.



- **Full-Day Game Drives**

Departing after breakfast at 08:30 with a picnic lunch, returning at 16:00 for afternoon tea.

- **Exclusive Game Drives are also on offer providing you with flexible use of a private vehicle and guide between 06:30 and 18:00.**

Ruaha National Park is the largest Park in Tanzania and is located in the centre of the country. It lies in the convergence zone where northern and southern hemisphere birds and mammal species overlap, resulting in an overwhelming number of birds (530 recorded) plants (1400) and a large number of mammal species.

The Great Ruaha River is the lifeline of the park as it is its only permanent water source.

A full day game drive along the river takes you over rocky kopjes, home to the Greater kudu, Roan antelope and elephant, and winds down along the river bank through open plains, perfect for cheetah, herds of buffalo, warthogs, jackals, bated Foxes – the list is endless. The lion population here is now so large (largest in Tanzania) that they have gained film rights for their prowess at hunting Giraffe – which is not their traditional fare. The river banks are rich with birdlife, hippos and crocs. For the more adventurous, above the escarpment lives the more elusive Sable Antelope.

Ruaha also boasts a well-developed road network, with plenty of different routes to explore for morning game drives before returning to the lodge for lunch. Time spent on your veranda at the water's edge, or sitting in one of the 2 bar areas will be an equally enjoyable part of your safari here where the animals wander in front of your room to come down to drink. Finish off your day with an afternoon drive to the hippo pool and catch the African sunset over the plains.



After breakfast, you will have the chance to enjoy one final game drive through Ruaha National Park, as you wind your way to the airstrip for your flight back to Dar es Salaam.

Flight No 03 (times may vary with schedule requirements)

Departure Time: 13:15 Arrival Time: 15:30



2025 - 2026 High Season: \$3771 pp | Low Season: \$3486 pp

Shared basis (incl. game package, park fees/taxes and internal transport).

Private Game Drives:

Supplement rate of \$350 per vehicle per day.

Game Package Includes Room Rate Plus:

- Breakfast, Lunch, Dinner
- Two shared game activities in an open vehicle/on foot with a guide per night (walking, game drives, boating)
- Domestic Flights
- Airstrip Transfers
- Tea and Coffee
- Laundry
- Park and Concession fees

High Season:

1st July - 31 October

24th December - 31st December

1st January - 4th January

Low Season:

1st June - 30th June

1st November - 23rd December

5th January - 31st May

