



THE ROYAL PORTFOLIO

ROYAL MALEWANE

Waterside
FACT SHEET



CONTENTS

WELCOME TO WATERSIDE	1
LODGES AND VILLAS MAP	2
WATERSIDE LODGE MAP	3
ACCOMMODATION COMPARISON	4
A WORLD OF COLOUR AWAITS	5
ACCOMMODATION	6
ALOE ROOMS	7
LUXURY SUITE	8
BAOBAB SUITE	9
WATERSIDE HOUSE	10
BRING THE CHILDREN	11
ACTIVITIES	12
EXCURSIONS	13
GUIDING TEAM	14
SPA AND WELLNESS	15
DINING	16
WHAT TO PACK	17
COMMUNITY AND CONSERVATION	18
SUSTAINABILITY	19
GETTING TO WATERSIDE	20
GOOD TO KNOW	21
ROYAL MALEWANE LODGES COMPARISON	22
CONTACT US	23

WELCOME TO

Waterside

Still, tranquil waters of the waterhole reflect sweeping blue skies, a backdrop to a grove of primal green fever trees, producing the perfect canvas for the calming elegance and colourful intrigue of Waterside at Royal Malewane.

Waterside presents an immersive setting that will engage your senses, rest your mind and reawaken your soul. It is perfect for couples or families who value memorable experiences, personalised service and unrivalled game viewing.

The lodge provides a bold new African context for Liz Biden's opulent, bright and breathtaking designs. It draws on the timeless luxury that Royal Malewane has become synonymous with while adding thoughtful innovations to complement its surroundings and anticipate every need of a modern luxury safari.

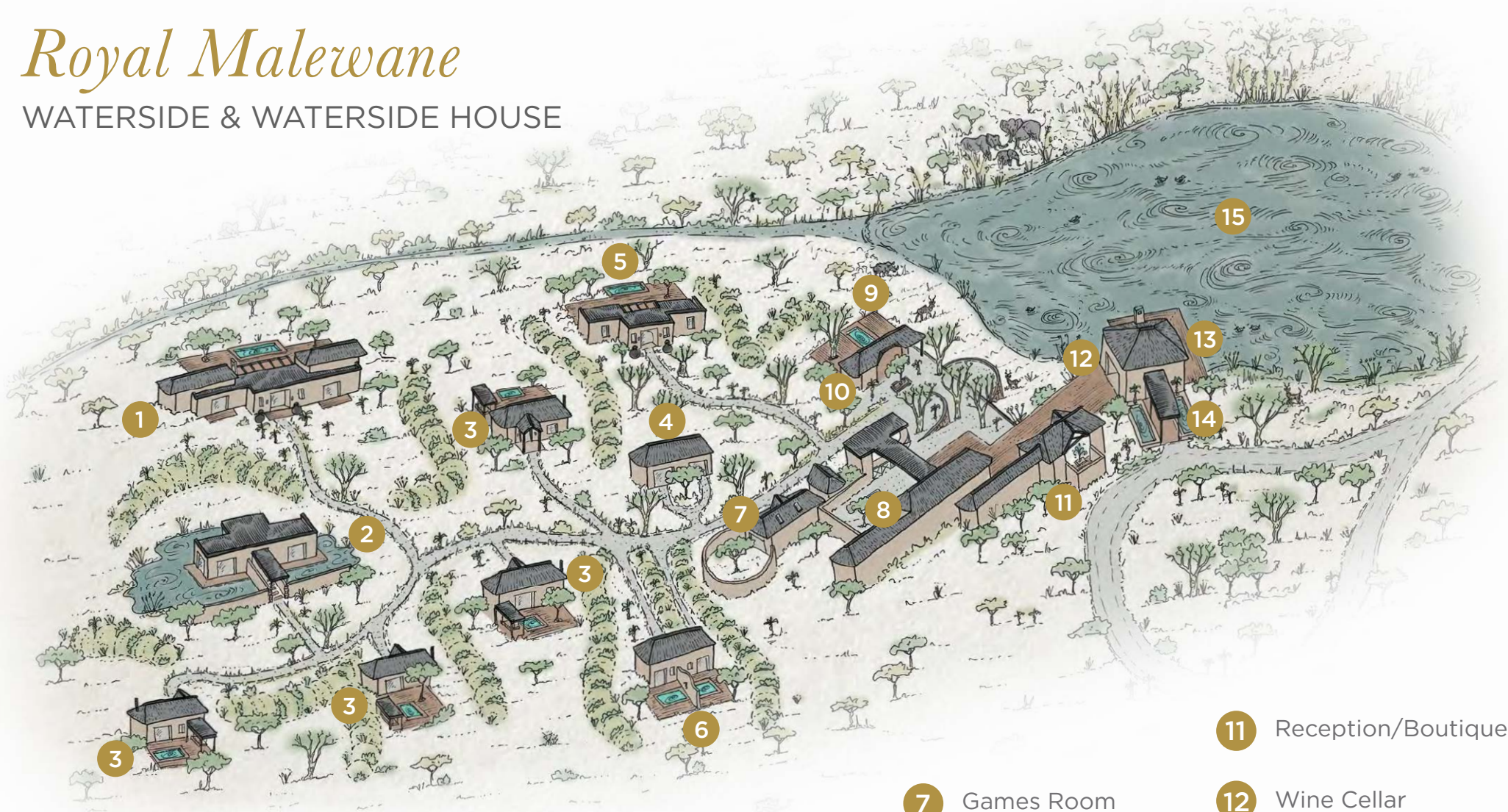


Royal Malewane Lodges and Villas



Royal Malewane

WATERSIDE & WATERSIDE HOUSE



1 Waterside House

2 Spa

3 Luxury Suites

4 Gym/Yoga Rooms

5 Baobab Suite

6 Aloe Rooms

7 Games Room

8 Dining/Bar Area

9 Waterside Pool

10 Library

11 Reception/Boutique

12 Wine Cellar

13 Hide

14 Arrival Pavillion

15 Waterhole

Accommodation Comparison

ACCOMMODATION	WATERSIDE				WATERSIDE HOUSE	
	DETAILS				DETAILS	
	FACILITIES				FACILITIES	
	Sleeps a total of 16 guests				Sleeps 8	
	SUITE/ROOM NAME	Aloe	Luxury	Boabab	BEDROOM TYPE	King Bed
	NO. OF SUITES/ROOMS	2	4	1	NO. ROOMS IN VILLA	4
ACCOMMODATION	ROOMS PER SUITE	1	1	2	ENSUITE	Yes
	AGES	All	All	All	AGES	Children of all ages
	PRIVATE SERVICES	No	No	Yes*	PRIVATE SERVICES	Yes
						

*Private vehicle only

A World of Colour Awaits

Stimulating your sense of sight, the visual impact of Liz's signature maximalist style promises to leave you enchanted. Speaking to the bold, seasonal hues of the bush, Waterside brings a splash of colour to Royal Malewane.

“

It's important to me that not only does it look nice but that it's comfortable with a little touch of magic. I love my guests to think "Ah, that's entertaining" or "That's unusual". ”

LIZ BIDEN



Accommodation

Waterside's extra-large Luxury Suites exude an effortless elegance. Jewel-toned rugs cloak the floors, thatch peeks out between ceiling beams, private plunge pools beckon on expansive decks with views over the bush (and sometimes visiting elephants).

- 2x Aloe Rooms (one-bedroom)
- 4x Luxury Suites (one-bedroom)
- 1x Baobab Suite (two-bedroom)
- 1x Waterside House (four-bedroom)

All of Waterside's luxurious freestanding suites are linked up to the lodge's reception, dining areas, library, family games room and spa via paths that are illuminated at night.





Aloe Rooms

2x One-bedroom Aloe Rooms. Each Aloe Room is 41.08m² (442ft²), including the bathroom and toilet.

Children of all ages are welcome in the Aloe Rooms should a private vehicle be booked - subject to availability.

BOTH ALOE ROOMS INCLUDE:

- Ceiling fans
- Air conditioning
- Tea and coffee making facilities
- Mini-bar
- In-room safes
- Telephones
- Smart TV
- Wi-Fi
- International adaptors and hairdryers
- Private deck and plunge pool
- Outdoor showers



Luxury Suite

4x One bedroom Luxury Suites. Each Luxury Suite is 155m² (1,668ft²) including a private deck, outdoor sala and plunge pool. Rooms can be made up in twin or a king configuration.

Children of all ages are welcome in the Luxury Suites should a private vehicle be booked - subject to availability.

ALL LUXURY SUITES INCLUDE:

- Ceiling fans
- Air conditioning
- Tea and coffee making facilities
- Mini-bar
- In-room safes
- Telephones
- Smart TV
- Wi-Fi
- International adaptors and hairdryers
- Fireplace
- Private deck and plunge pool
- Outdoor sala
- Outdoor shower

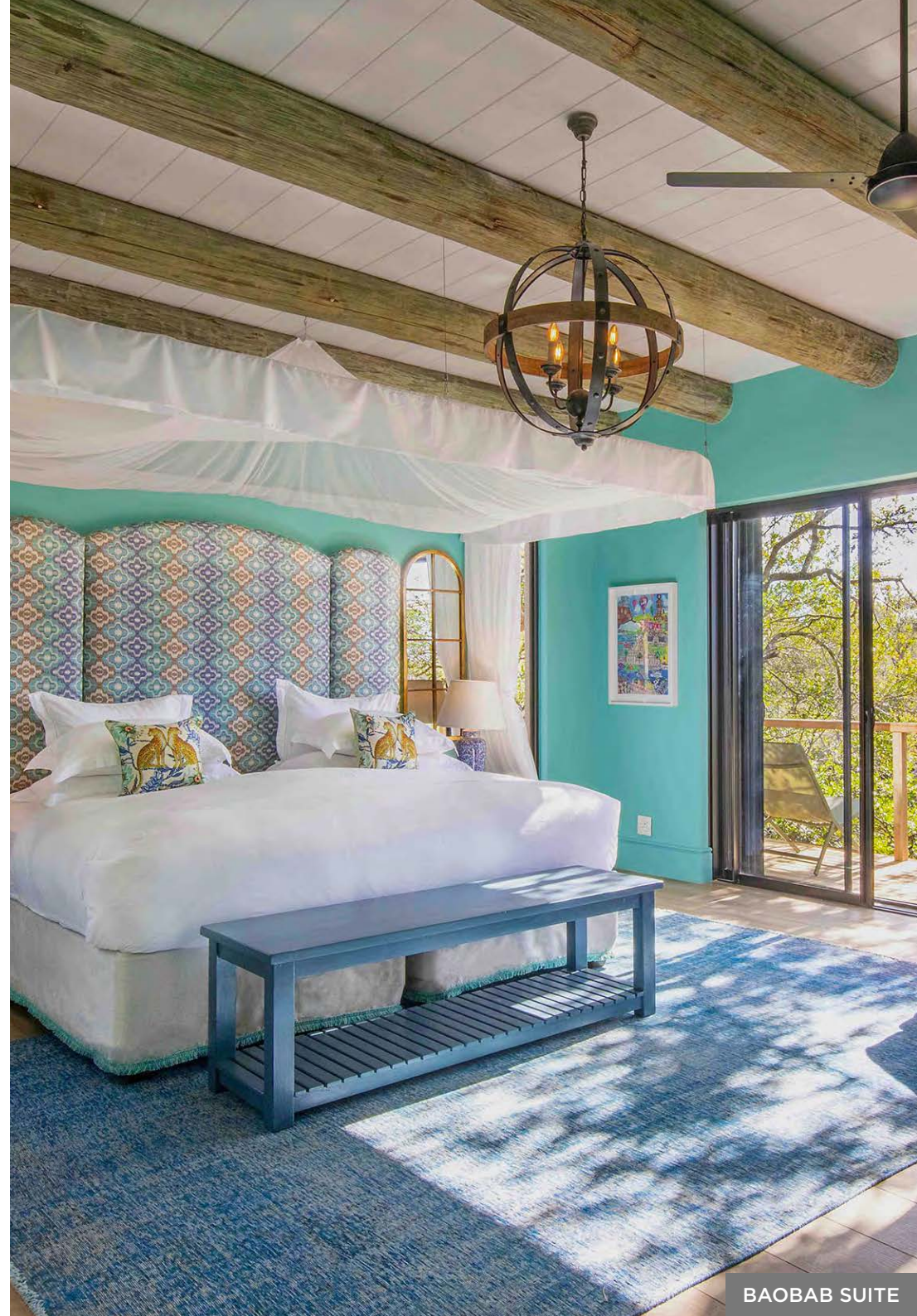
The Baobab Suite

1x Two-bedroom Suite. The total suite is 280m² (3,014ft²) including the private deck and plunge pool.

Children of all ages are welcome in the Baobab Suite.

THE BAOBAB SUITE INCLUDES:

- Ceiling fans in all the rooms
- Air conditioning in every room
- Tea and coffee making facilities
- Mini-bar
- In-room safes
- Telephones
- Smart TV
- Wi-Fi
- International adaptors and hairdryers
- Fireplace
- Private deck and plunge pool
- Outdoor showers
- A private safari vehicle with a Guide and Tracker



Waterside House

Accommodation at Waterside House is spacious and elegant with vibrantly natural furnishings. Light floods into the four en-suite bedrooms, each of which enjoys a private deck. Waterside House measures 300m² (3,229ft²) including all rooms, private deck, outdoor sala and plunge pool.

Waterside House has private services (private chef, host and private safari vehicle with a Guide and Tracker)

WATERSIDE HOUSE INCLUDES:

- Ceiling fans in every room
- Air conditioning in every room
- Tea and coffee making facilities
- Mini-bar
- In-room safes
- Telephones
- Smart TV
- Wi-Fi
- International adaptors and hairdryers
- Lounge, dining area with an open-plan kitchen
- Fireplace
- Private deck with plunge pool and outside barbeque
- Access to Waterside's reception, dining areas, library, family games room, Reflections Spa and fitness center



WATERSIDE HOUSE LOUNGE



Bring the Children

Children of any age are welcome in our two-bedroom Baobab Suite and our four-bedroom Waterside House. Children of all ages are welcome in the one-bedroom Luxury Suites or the one-bedroom Aloe Rooms should a private vehicle be booked.

THE CHILDREN WILL LOVE:

- Child-friendly game drives
- Animal checklist
- Family games room / Entertainment area
- Arts & crafts
- Board games & puzzles
- Bush quiz

Our expert guides and trackers love to share their knowledge with children of all ages and are masters at making that knowledge accessible to future rangers during game drives.

Activities

Inviting endless opportunities to reconnect and experience a sense of togetherness in this pristine natural setting, guests can choose how to spend their days.

- Twice daily game drives with the most accomplished guiding team in Africa
- Discover the finer details of the bush while on foot during a bush walk
- Soothing wellness treatments at Reflections Spa
- Photographic safaris
- World-class wine tastings
- Make use of the gym facilities

CONSERVATION ACTIVITIES

- Visit Royal Malewane's Conservation and Research Centre
- Rhino dehorning experience
- Helicopter patrol flight
- APNR Ground-hornbill project experience
- Elephants Alive experience
- K9 Unit demonstration
- EWT wild dog conservation experience

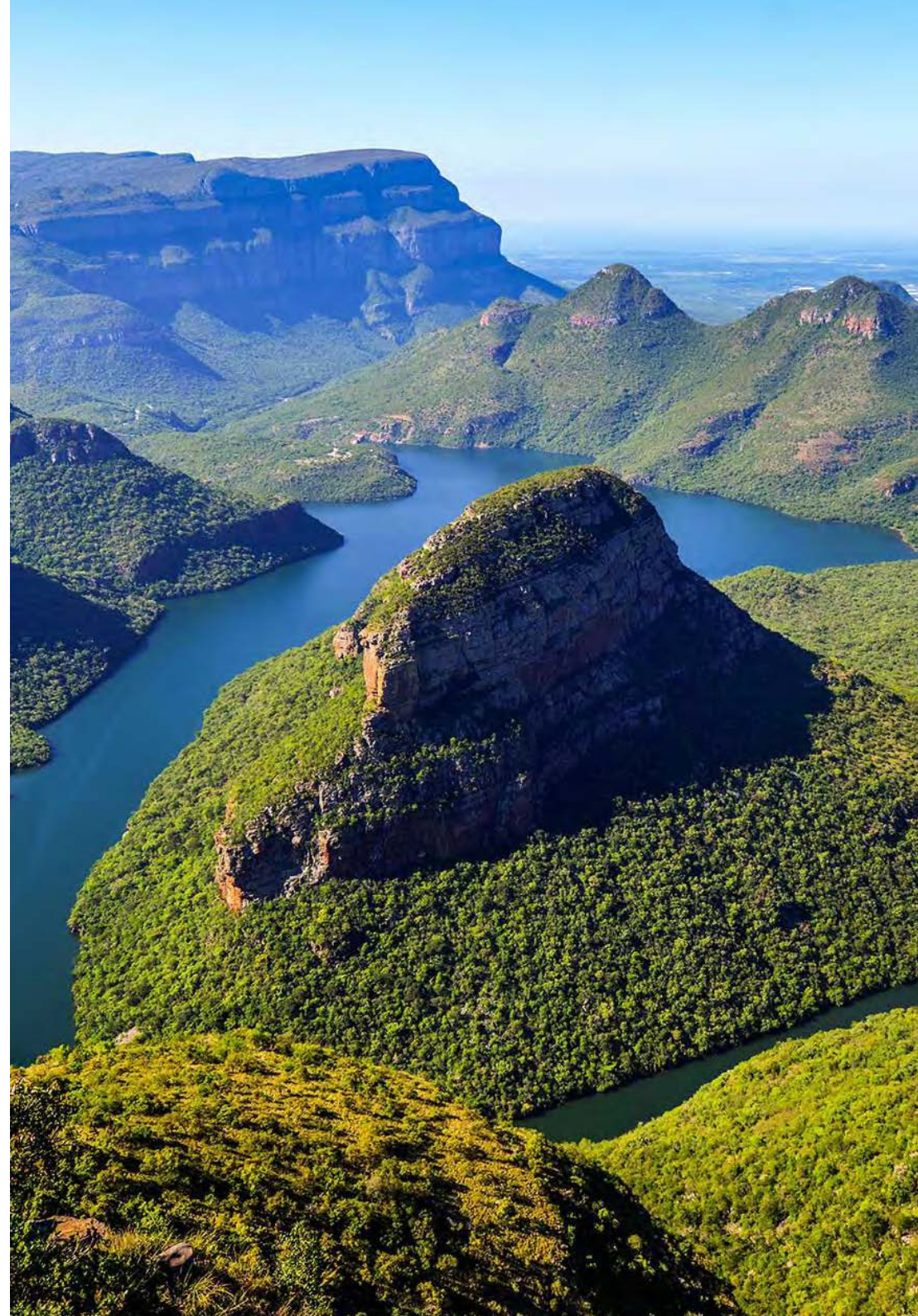
For more information on these conservation experiences, click [here](#). All conservation activities are subject to operational availability.



Excursions

If you feel like venturing further afield, our Reservations team can arrange the following activities at an additional charge.

- Helicopter flights over the Blyde River Canyon, the world's deepest green canyon
- Golf at Africa's most exclusive bushveld golf course – Leopard Creek
- A visit to the Timbavati Museum
- A visit to the Moholoholo Wildlife Rehabilitation Centre
- Visit Langutelani Crèche, Sigagule Crèche, or Sihlekisi Primary School in the local community, each supported by The Royal Portfolio Foundation



The Most Qualified Guiding Team

IN AFRICA

Royal Malewane is often referred to as the 'Harvard of the Bush'. That's because of the guiding team's unyielding passion for learning and their ambition not just to be the best, but to raise the standards of the industry as a whole. The Guides at Royal Malewane strive to achieve the highest Field Guides Association of Southern Africa (FGASA) qualifications, as well as advanced rifle handling certificates.

These qualifications ensure that you will enjoy an exceptional game-viewing experience – not only while on game drive, but also on foot during guided bush walks. At the pinnacle of the professional guiding qualifications are the Special Knowledge & Skills (SKS) Qualifications such as Dangerous Game and Birding. Very few guides in Africa achieve these qualifications which require extensive knowledge as well as technical skills - the team at Royal Malewane has these attributes in abundance.

Further to the impressive qualifications above, is the FGASA Scout status. There are only 13 Professional Field Guides with FGASA Scout status in the world, and two of those, are on the Royal Malewane team. We are also very proud to have two of only 11 living Master Trackers in the world on our team, and they are the only two working in the Greater Kruger region. Wilson Masiya, who passed away in 2015, was a legendary Master Tracker at Royal Malewane who left a remarkable guiding legacy.

Collectively, our guiding team brings over 300 years of combined African bush experience, ensuring exceptional safari experiences for our guests.





| *Spa and Wellness*

Discover a spa in the heart of the African bush, surrounded by water and in complete harmony with its natural surroundings.

Experience tranquillity and rejuvenate your senses with specialised spa treatments focusing on the balance between body and mind. If you've come to Africa to feel nature's pulse, this is an ideal way of tuning your body to the right frequency.

- Hammam Experience
- 3x Treatment Rooms
(one of the rooms is a double)



| Dining

Dining at Waterside is a unique experience with a wide variety of beautiful settings in which to savour soul-stirring recipes and our handpicked selection of South Africa's finest wines.

Waterside offers you complete dining flexibility. We can tailor a menu to your personal tastes and dietary requirements. All meals, local beverages and house wines are included in our rates.

Bush Dinners bring a whole new meaning to "al fresco" and should not be missed. Feast under the stars, surrounded by the wilderness, and comforted by the glow of lanterns and a crackling fire.

Please speak to us about private chefs, our Kosher Compliant Kitchen (at an extra cost) and any dietary requirements.

| *What to Pack*

The Golden Rule to remember is that safari should always be more about comfort than style; however, it is very possible to achieve both. Pack very minimal and lightweight, clothing in neutral, earth colours. Since Royal Malewane provides laundry services, packing light should be easy.

- A good pair of walking shoes and socks (for bush walks)
- Sandals for around the lodge and in your room
- Closed shoes for the evenings
- Long sleeve and mid-sleeve cotton shirts for layering
- Shorts - two or three pairs for midday wear
- Sleeveless shirts for warmer days
- Swimming costume
- A wind breaker
- Active wear (if wanting to use our gym)
- A sun hat or two (a wide brimmed hat that has a string)
- Sunglasses and a light scarf
- High SPF sunblock and mosquito repellent
- Camera, video camera, binoculars, spare memory cards, and chargers

ADDITIONAL ITEMS TO PACK FOR WINTER:

- | | |
|--------------------------|--|
| • A warm jacket | • A beanie and scarf for morning drives |
| • Cotton shirts or vests | • A few long sleeve shirts |
| • One or two jumpers | • A few long pants |
| • Thermal undergarments | • Walking shoes, sandals and boots |
| • Winter evening wear | • A lightweight rain jacket for the rainy season |





Community and Conservation

Aligned with The Royal Portfolio's ethos, Royal Malewane prioritises community upliftment and environmental conservation.

COMMUNITY

- We support community development projects
- We're committed to improving crèche and school facilities in nearby villages
- Guests have the chance to visit the local crèches and schools we support

CONSERVATION

- Thornybush's K9 anti-poaching dog unit is making the Greater Kruger area safer for wildlife
- The Royal Portfolio Foundation is committed to supporting various conservation projects in the Greater Kruger, such as the APNR Ground Hornbill Project, EWT Birds of Prey Programme and the EWT Wild Dogs Project

THE CONSERVATION AND RESEARCH CENTRE

The Royal Malewane Conservation & Research Centre (CRC) is a hub for researchers, scientists, and guests who share our passion for conservation. It is a space where professionals can share their findings through lectures and discussions.

The CRC will inform and empower our goal of preserving the Greater Kruger ecosystem; it fosters a deeper understanding of the challenges we face and how we plan to overcome them.



Sustainability

HYDRONIC HEATING AND COOLING WATER SYSTEM

At our most recently built lodges and villas, we've invested in an innovative, integrated heating system that uses solar energy and hydronics to heat water, pools, towel rails, and underfloor heating, while also powering the air conditioning.

ADDITIONAL PROJECTS

- We're reducing the amount of water we use
- We're limiting our carbon footprint by choosing energy-efficient devices
- We're phasing out plastic water bottles in favour of reusable glass bottles

GETTING TO *Waterside*

TRAVEL BY AIR

From Johannesburg (O.R. Tambo International Airport -JNB):

SA Airlink and CemAir fly daily to Hoedspruit Airport (HDS). Bookings can be made directly online.

Road transfers can be arranged by Royal Malewane and take approximately 35 minutes in a comfortable air-conditioned vehicle.

From Cape Town International Airport (CPT):

SA Airlink and CemAir fly daily to Hoedspruit Airport (HDS). Bookings can be made directly online.

Chartered Flights:

You can also charter your own flight directly to our private airstrip. Our Reservations Team can assist with domestic flights and private charters and road transfers.

AIRLINE DETAILS

CemAir:

www.flycemair.co.za/
+27 86 123 6247

SA Airlink:

www.flyairlink.com/en/za/
+27 11 451 7300



Good to Know

GENERAL

- We have a 24-hour staffed switchboard
- Babysitting services can be arranged at an additional cost
- Weddings can also be arranged at Royal Malewane
- Private safari vehicles can be arranged on request, subject to availability and at additional cost
- We accept MasterCard, Visa, Diners Club and American Express Credit Cards
- We welcome families with children of all ages at Waterside

INCLUDED IN STAY

- | | |
|---------------------------------|--|
| • Accommodation | • Game drive and bush walks |
| • All meals & snacks | • Transfers to and from Royal Malewane Airstrip |
| • All coffees & speciality teas | • Waterside House only - Private services (private chef, host and private safari vehicle with a Guide and Tracker) |
| • Mini-bar | • Baobab Suite only - Private safari vehicle with a Guide and Tracker |
| • Wi-Fi | |
| • Local beverages & house wines | |
| • Laundry service | |

EXCLUSIONS

- | | |
|--------------------------|--|
| • Boutique purchases | • Conservation & Community Levy |
| • Telephone calls | • Transfers to and from the reserve |
| • Kosher meals | • Private safari vehicle (with the exception of Waterside House and Baobab suite where this is included in the rate) |
| • Photographic equipment | |



Royal Malewane Lodges Comparison

MALEWANE LODGE

A classic and traditional bush-style lodge, brimming with old-world elegance and timeless luxury. This is the original Biden Family homestead.

- Sleeps 20 guests across six Luxury Suites and two Royal Suites
- All suites enjoy direct access to Malewane Lodge's reception, dining areas, library, spa and gym via illuminated pathways
- Guide's room available
- Masiya bar and Wine Cellar
- The Royal Waters Spa
- Luxury Suites welcome children over 10 years old
- Royal Suites welcome children of all ages and offer private services

FARMSTEAD

A contemporary-style lodge with sweeping vistas over the bushveld. A more intimate and private space that is both stylish and comfortable.

- Sleeps 6 guests across three Luxury Farm Suites
- All suites enjoy direct access to Farmstead's reception, dining area, treatment room, gym and The Farmhouse via illuminated walkways
- Guide's room available
- Communal bar
- Treatment room
- Luxury Farm Suites welcome children over 10 years old

WATERSIDE

A modern luxury safari lodge that combines thatch, glass and steel. This spacious sanctuary brings a splash of colour to Royal Malewane.

- Sleeps 16 guests across four Luxury Suites, two Aloe Rooms and one Baobab Suite
- All suites enjoy direct access to Waterside's reception, dining areas, library, family games room, spa, gym and yoga room via illuminated pathways
- Guide's room available
- Outdoor bar
- Wine cellar
- Reflections Spa
- Children of all ages are welcome

MASIYA'S CAMP

Masiya's Camp offers a unique experience under canvas in an ultra-modern style, with every comfort one could imagine.

- Sleeps 12 guests across six Luxury Tented Suites
- All suites enjoy direct access to Masiya Camp's dining areas, boutique, pool and reception
- Communal bar and lounge
- Children aged 10 and above are welcome

Private Villa Options

AFRICA HOUSE

- Sleeps up to 12 guests
- A two-minute drive from Malewane Lodge
- Private services (private chef, host and private safari vehicle with a Guide and Tracker)
- Children of all ages are welcome

FARMHOUSE

- Sleeps 6 adults and 2 children
- Private services (private chef, host and private safari vehicle with a Guide and Tracker)
- Direct access to Farmstead and its facilities via illuminated pathways
- Children of all ages are welcome

WATERSIDE HOUSE

- Sleeps up to 8 guests
- Private services (private chef, host and private safari vehicle with a Guide and Tracker)
- Direct access to Waterside and its facilities via illuminated pathways
- Children of all ages are welcome