



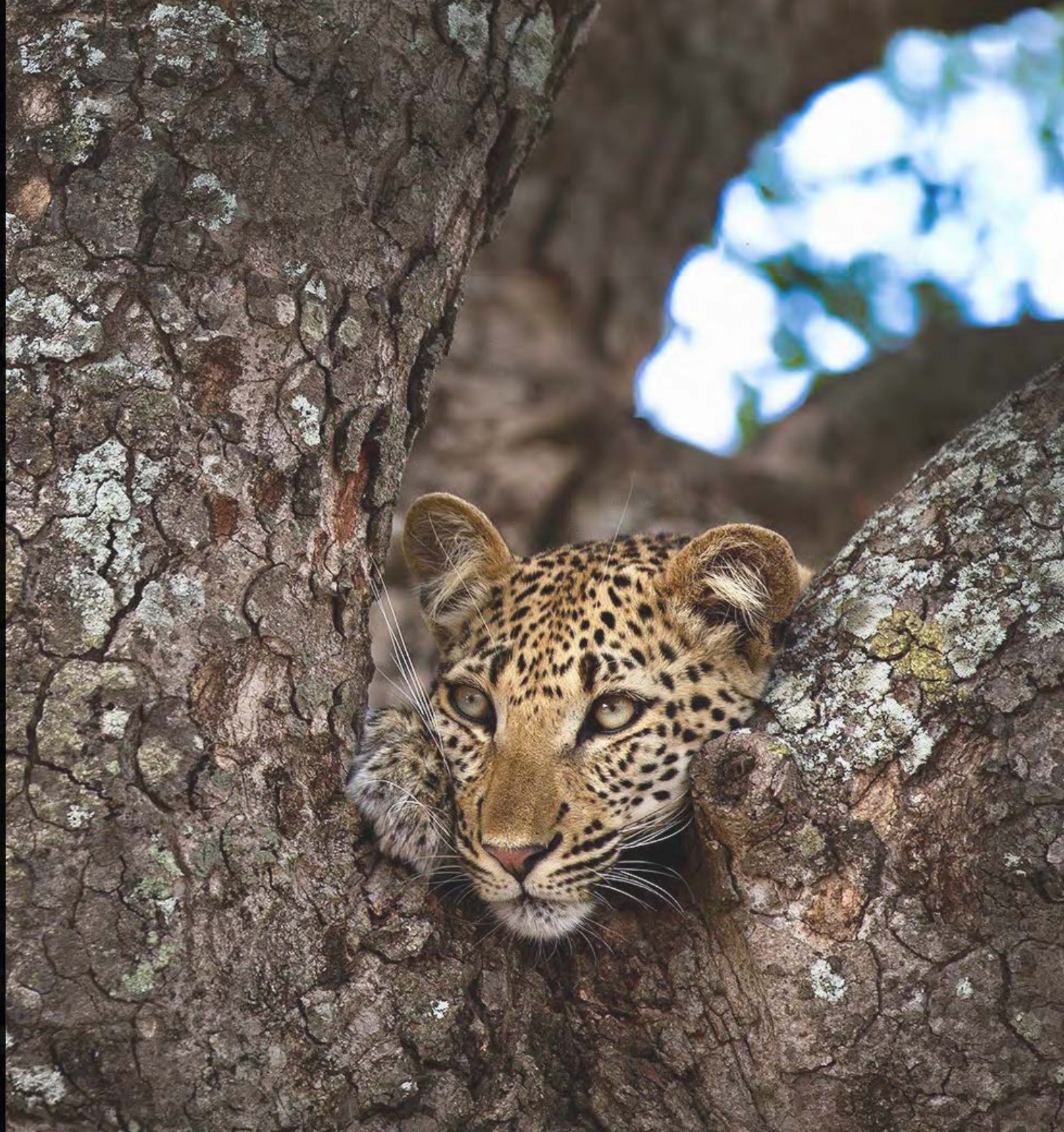
THE ROYAL PORTFOLIO

ROYAL MALEWANE

---

*Farmstead*

FACT SHEET







## CONTENTS

WELCOME TO FARMSTEAD	1
LODGES AND VILLAS MAP	2
FARMSTEAD LODGE MAP	3
ACCOMMODATION COMPARISON	4
IN FINE STYLE	6
LUXURY FARM SUITES	11
FARMHOUSE	15
BRING THE CHILDREN	16
ACTIVITIES	17
EXCURSIONS	18
THE MOST QUALIFIED GUIDING TEAM	19
SPA AND WELLNESS	20
DINING	21
WHAT TO PACK	22
COMMUNITY AND CONSERVATION	23
SUSTAINABILITY	24
OUR COMMUNITY	25
GETTING TO FARMSTEAD	26
GOOD TO KNOW	27
ROYAL MALEWANE LODGES COMPARISON	28
CONTACT US	29



## WELCOME TO *Farmstead*

**Farmstead is an exclusive safari lodge at Royal Malewane in the Greater Kruger National Park, bringing a sense of home in its space and privacy, while brimming with the elegance synonymous with The Royal Portfolio.**

Farmstead offers something unique in terms of luxury that comes in stark contrast to the ultra-modern style in vogue. Comfort meets contemporary in the brightly accented bedrooms where Liz Biden's design flair meets the untamed wilderness of the outdoors.

Accommodation includes three Luxury Farm Suites and a three-and-a-half bedroom exclusive-use safari villa - Farmhouse - where guests will have private services.

Despite the extravagant space, there is a rustic homeliness to Farmstead which offers the same exceptional service, excellent cuisine, and engaging safari experience as guests have come to expect over 20 years at Royal Malewane.



FARMSTEAD ENTRANCE



## *Royal Malewane Lodges and Villas*





# Royal Malewane

## FARMSTEAD & FARMHOUSE





# Accommodation Comparison

DETAILS

FACILITIES

ACCOMMODATION

FARMSTEAD


A contemporary-style lodge with sweeping vistas over the bushveld. A more intimate and private space that is both stylish and comfortable.

- Reception
- Gym
- Treatment Room

- Dining areas
- Communal bar

Sleeps a total of 6 guests

SUITE NAME	Luxury Farm Suite
NO. OF SUITES	3
ROOMS PER SUITE	1
AGES	10 & up
PRIVATE SERVICES	No



FARMHOUSE

An exclusive-use private villa that offers private services.


- Swimming pool
- Private deck
- Outdoor shower
- Lounge and dining area
- Open-plan kitchen

Farmhouse has access to the following Farmstead facilities:

- Reception
- Gym
- Treatment Room

Sleeps 6 adults and 2 children

BEDROOM TYPE	Super King Bed	Two 3/4 Beds
NO. ROOMS IN VILLA	3	1
ENSUITE	Yes	Yes
AGES	Children of all ages	
PRIVATE SERVICES	Yes	









## *In Fine Style*

Antique doors from East Africa welcome guests into the comfortable interiors that are a marriage of the contemporary style of The Silo Hotel and the capricious opulence of La Residence. Fabrics from Ardmore and Clarke & Clarke cover the plush sofas and designer chairs. Light oak, tin roofs, wrought iron and gentle hues of blue and white define the style with lively splashes of emerald and ruby.

In the main lodge, a vintage North African banking kiosk is repurposed as a serving hatch for delicious, contemporary African cuisine produced in the kitchen. After dinner, guests are invited to relax around the fire pit and reflect on the day's wildlife adventures. Further relaxation can be found in a double spa treatment room offering a variety of indulgent treatments or in the gym.

Outdoor living is encouraged on the deep verandas replete with hanging daybeds custom made for Farmstead. The collection of contemporary African art enhances The Royal Portfolio's already extensive private collection with notable pieces by Kudzanai Chiurai and James Jana among other works from the AVA Gallery and Smith Studio. In keeping with the community involvement of Farmstead, there are a number of pieces from Lalela.



FARMSTEAD MAIN DECK



















## *Luxury Farm Suites*

There are three Luxury Farm Suites which each sleep two people. Each has a spacious bedroom and an en-suite bathroom with a bath and a shower, as well as an outdoor shower. There are large front and back verandahs as well as a beautiful deck with a private pool overlooking the bush where animals roam freely.

Each Luxury Farm Suite is 182m<sup>2</sup> (1,960f<sup>2</sup>) including front and back verandahs and the deck. Children over 10 years old are welcome in the Luxury Farm Suites.

### ALL LUXURY FARM SUITES INCLUDES:

- Super king-size beds which can be split into two three-quarter-size beds, with the exception of Luxury Farm Suite 1
- Ceiling fans
- Air conditioning
- Underfloor heating in bathrooms
- Tea and coffee making facilities
- Mini-bar
- In-room safes
- Telephones
- Smart TV
- Wi-Fi
- International adaptors and hairdryers
- Private deck and plunge pool
- Outdoor shower



LUXURY FARM SUITE















# *Farmhouse*

## PRIVATE VILLA

Farmhouse is a 4 bedroom private villa (with 1 slightly smaller bedroom - perfect for children) which is ideal for families or a group of friends. Like Africa House and the Royal Suites at Malewane Lodge, Farmhouse has its own private services. Guests will have their own private safari vehicle with a dedicated Guide and Tracker ensuring the ultimate in personalised luxury.

There are three main bedrooms as well as a smaller room. There is a magnificent deck with a large swimming pool extending out into the bush, bringing the total area of Farmhouse to 636m<sup>2</sup> (6845f<sup>2</sup>). Children of all ages are welcome.

### FARMHOUSE INCLUDES:

- Three bedrooms with super king size beds which can be split into two three-quarter size beds; one smaller bedroom with two three-quarter size beds
- Ceiling fans
- Air conditioning
- Underfloor heating in bathrooms
- Mini-bar
- Telephones
- Smart TV
- Wi-Fi
- International adaptors and hairdryers
- Private deck, overflow pool and outdoor showers
- Private services (private chef, host and private safari vehicle with a Guide and Tracker)







## *Bring the Children*

Children over 10 years old are welcome in the Luxury Farm Suites and children of all ages are welcome at Farmhouse.

### THE CHILDREN WILL LOVE:

- Child-friendly game drives
- Animal checklist
- Arts & crafts
- Board games & puzzles
- Bush quiz

Our expert guides and trackers love to share their knowledge with children of all ages and are masters at making that knowledge accessible to future rangers during game drives.



# Activities

**Inviting endless opportunities to reconnect and experience a sense of togetherness in this pristine natural setting, guests can choose how to spend their days.**

- Twice daily game drives with the most accomplished guiding team in Africa
- Discover the finer details of the bush while on foot during a bush walk
- Soothing wellness treatments at Farmstead's double treatment room or at Royal Waters Spa close by
- Photographic safaris
- World-class wine tastings
- Make use of the gym facilities

## CONSERVATION ACTIVITIES

- Visit Royal Malewane's Conservation and Research Centre
- Rhino dehorning experience
- Helicopter patrol flight
- APNR Ground-hornbill project experience
- Elephants Alive experience
- K9 Unit demonstration
- EWT wild dog conservation experience

*For more information on these conservation experiences, click [here](#). All conservation activities are subject to operational availability.*

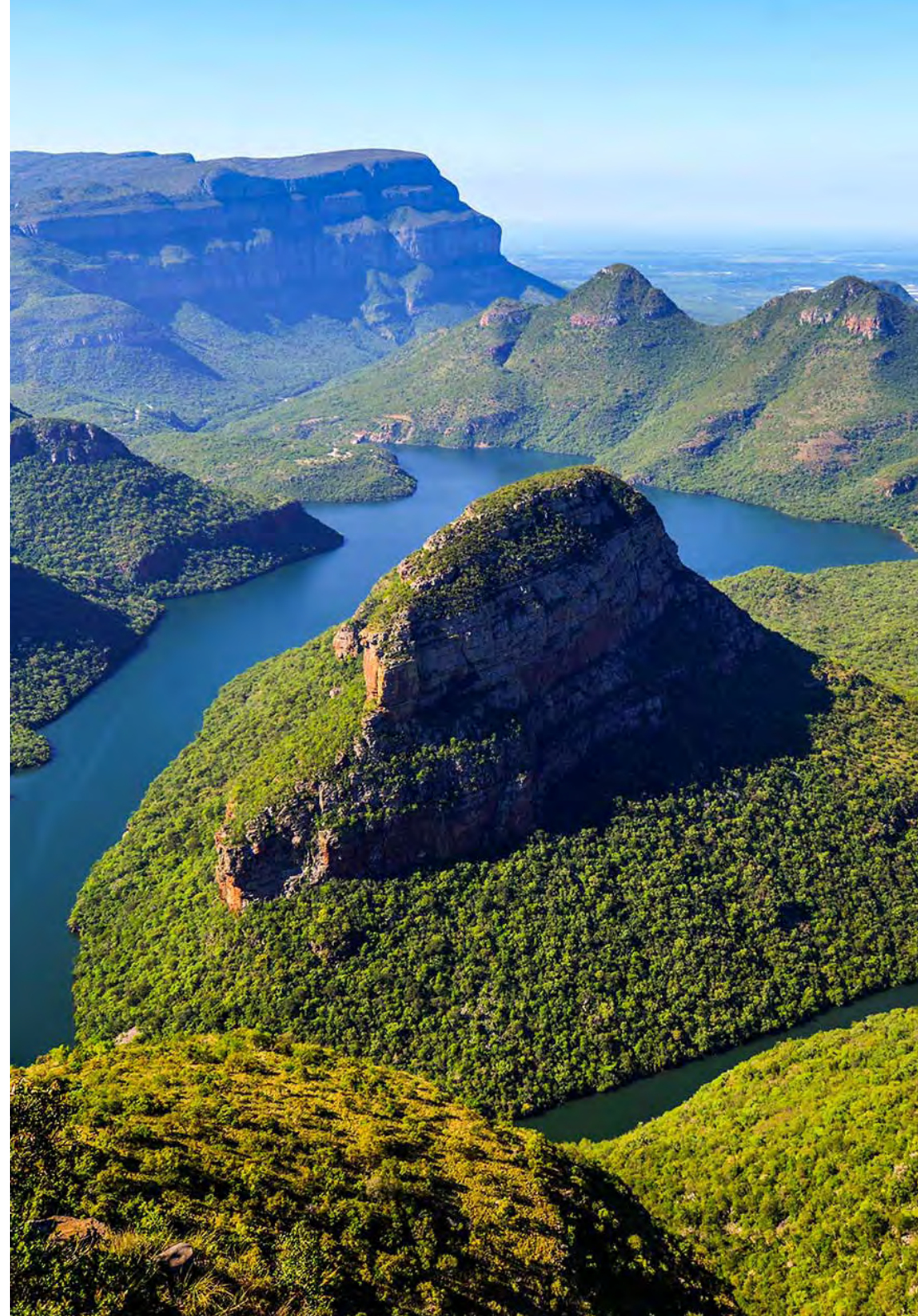




## *Excursions*

If you feel like venturing further afield, our Reservations team can arrange the following activities at an additional charge.

- Helicopter flights over the Blyde River Canyon, the world's deepest green canyon
- Golf at Africa's most exclusive bushveld golf course – Leopard Creek
- A visit to the Timbavati Museum
- A visit to the Moholoholo Wildlife Rehabilitation Centre
- Visit Langutelani Crèche, Sigagule Crèche, or Sihlekisi Primary School in the local community, each supported by The Royal Portfolio Foundation





# *The Most Qualified Guiding Team*

IN AFRICA

Royal Malewane is often referred to as the 'Harvard of the Bush'. That's because of the guiding team's unyielding passion for learning and their ambition not just to be the best, but to raise the standards of the industry as a whole. The Guides at Royal Malewane strive to achieve the highest Field Guides Association of Southern Africa (FGASA) qualifications, as well as advanced rifle handling certificates.

These qualifications ensure that you will enjoy an exceptional game-viewing experience – not only while on game drive, but also on foot during guided bush walks. At the pinnacle of the professional guiding qualifications are the Special Knowledge & Skills (SKS) Qualifications such as Dangerous Game and Birding. Very few guides in Africa achieve these qualifications which require extensive knowledge as well as technical skills - the team at Royal Malewane has these attributes in abundance.

Further to the impressive qualifications above, is the FGASA Scout status. There are only 13 Professional Field Guides with FGASA Scout status in the world, and two of those, are on the Royal Malewane team. We are also very proud to have two of only 11 living Master Trackers in the world on our team, and they are the only two working in the Greater Kruger region. Wilson Masiya, who passed away in 2015, was a legendary Master Tracker at Royal Malewane who left a remarkable guiding legacy.

Collectively, our guiding team brings over 300 years of combined African bush experience, ensuring exceptional safari experiences for our guests.







## *Spa and Wellness*

Spending time in the African bushveld is undoubtedly good for your soul, and you can also use your time at Farmstead to top up your wellness reserves.

Farmstead's tranquil double spa treatment room offers a serene escape, where guests can unwind in ultimate comfort. Whether enjoying a couple's treatment or a peaceful retreat for yourself, the space is designed to enhance relaxation and well-being, ensuring a truly restorative experience.





## | Dining

Dining at Farmstead is a unique experience with a wide variety of beautiful settings in which to savour soul-stirring recipes and our handpicked selection of South Africa's finest wines.

Farmstead offers you complete dining flexibility. We can tailor a menu to your personal tastes and dietary requirements. All meals, local beverages and house wines are included in our rates.

Bush Dinners bring a whole new meaning to “al fresco” and should not be missed. Feast under the stars, surrounded by the wilderness, and comforted by the glow of lanterns and a crackling fire.

*Please speak to us about private chefs, our Kosher Compliant Kitchen (at an extra cost) and any dietary requirements.*



# What to Pack

The Golden Rule to remember is that safari should always be more about comfort than style; however, it is very possible to achieve both. Pack very minimal and lightweight, clothing in neutral, earth colours. Since Royal Malewane provides laundry services, packing light should be easy.

- A good pair of walking shoes and socks (for bush walks)
- Sandals for around the lodge and in your room
- Closed shoes for the evenings
- Long sleeve and mid-sleeve cotton shirts for layering
- Shorts - two or three pairs for midday wear
- Sleeveless shirts for warmer days
- Swimming costume
- A wind breaker
- Active wear (if wanting to use our gym)
- A sun hat or two (a wide brimmed hat that has a string)
- Sunglasses and a light scarf
- High SPF sunblock and mosquito repellent
- Camera, video camera, binoculars, spare memory cards, and chargers

## ADDITIONAL ITEMS TO PACK FOR WINTER:

- |                          |  |
|--------------------------|--|
| • A warm jacket          | • A beanie and scarf for morning drives          |
| • Cotton shirts or vests | • A few long sleeve shirts                       |
| • One or two jumpers     | • A few long pants                               |
| • Thermal undergarments  | • Walking shoes, sandals and boots               |
| • Winter evening wear    | • A lightweight rain jacket for the rainy season |







THE CONSERVATION AND RESEARCH CENTRE

## *Community and Conservation*

Aligned with The Royal Portfolio's ethos, Royal Malewane prioritises community upliftment and environmental conservation.

### COMMUNITY

- We support community development projects
- We're committed to improving crèche and school facilities in nearby villages
- Guests have the chance to visit the local crèches and schools we support

### CONSERVATION

- Thornybush's K9 anti-poaching dog unit is making the Greater Kruger area safer for wildlife
- The Royal Portfolio Foundation is committed to supporting various conservation projects in the Greater Kruger, such as the APNR Ground Hornbill Project, EWT Birds of Prey Programme and the EWT Wild Dogs Project

### THE CONSERVATION AND RESEARCH CENTRE

The Royal Malewane Conservation & Research Centre (CRC) is a hub for researchers, scientists, and guests who share our passion for conservation. It is a space where professionals can share their findings through lectures and discussions.

The CRC will inform and empower our goal of preserving the Greater Kruger ecosystem; it fosters a deeper understanding of the challenges we face and how we plan to overcome them.





## *Sustainability*

### HYDRONIC HEATING AND COOLING WATER SYSTEM

At our most recently built lodges and villas, we've invested in an innovative, integrated heating system that uses solar energy and hydronics to heat water, pools, towel rails, and underfloor heating, while also powering the air conditioning.

### ADDITIONAL PROJECTS

- We're reducing the amount of water we use
- We're limiting our carbon footprint by choosing energy-efficient devices
- We're phasing out plastic water bottles in favour of reusable glass bottles





## *Our Community*

In keeping with The Royal Portfolio's Purpose and Values, Farmstead is part of a broader project to support local communities. Royal Malewane agreed to a long lease of the land from the local Moletele community, paying a monthly rental to the community as well as a share of revenue as additional income. At the end of the long lease, all buildings and the land will revert to the community with the option to work with The Royal Portfolio in perpetuity.

Throughout the lease, The Royal Portfolio hire employees from the Moletele community, offering training to the standards of The Royal Portfolio, and involving the local community in conservation.

We continuously support and uplift various educational facilities in nearby villages. These include the Sigagule Crèche, Langetulani Crèche and Sihlekisi Primary School. We invite guests to join us as we visit the school or either of the crèches, which are approximately a 30-minute drive from Farmstead. All transfers are complimentary.



# GETTING TO *Farmstead*

## TRAVEL BY AIR

### **From Johannesburg (O.R. Tambo International Airport -JNB):**

SA Airlink and CemAir fly daily to Hoedspruit Airport (HDS). Bookings can be made directly online.

*Road transfers can be arranged by Royal Malewane and take approximately 35 minutes in a comfortable air-conditioned vehicle.*

### **From Cape Town International Airport (CPT):**

SA Airlink and CemAir fly daily to Hoedspruit Airport (HDS). Bookings can be made directly online.

### **Chartered Flights:**

You can also charter your own flight directly to our private airstrip. Our Reservations Team can assist with domestic flights and private charters and road transfers.

## AIRLINE DETAILS

### **CemAir:**

[www.flycemair.co.za/](http://www.flycemair.co.za/)

+27 86 123 6247

### **SA Airlink:**

[www.flyairlink.com/en/za/](http://www.flyairlink.com/en/za/)

+27 11 451 7300





# *Good to Know*

## GENERAL

- We have a 24-hour staffed switchboard
- Babysitting services can be arranged at an additional cost
- Weddings can also be arranged at Royal Malewane
- Private safari vehicles can be arranged on request, subject to availability and at additional cost
- We accept MasterCard, Visa, Diners Club and American Express Credit Cards
- We welcome families with children aged 10 and older at the Luxury Farm Suites. Children under 10 years are welcome at Farmhouse

## INCLUDED IN STAY

- Accommodation
- All meals & snacks
- All coffees & speciality teas
- Mini-bar
- Wi-Fi
- Laundry service
- Game drive and bush walks
- Local beverages & house wines
- Transfers to and from Royal Malewane Airstrip
- Farmhouse only - Private services (private chef, host and private safari vehicle with a Guide and Tracker)

## EXCLUSIONS

- Boutique purchases
- Telephone calls
- Kosher meals
- Photographic equipment
- Conservation & Community Levy
- Transfers to and from the reserve
- Private safari vehicle (with the exception of Farmhouse where this is included in the rate)





# Royal Malewane Lodges Comparison

## MALEWANE LODGE

A classic and traditional bush-style lodge, brimming with old-world elegance and timeless luxury. This is the original Biden Family homestead.

- Sleeps 20 guests across six Luxury Suites and two Royal Suites
- All suites enjoy direct access to Malewane Lodge's reception, dining areas, library, spa and gym via illuminated pathways
- Guide's room available
- Masiya bar and Wine Cellar
- The Royal Waters Spa
- Luxury Suites welcome children over 10 years old
- Royal Suites welcome children of all ages and offer private services

## FARMSTEAD

A contemporary-style lodge with sweeping vistas over the bushveld. A more intimate and private space that is both stylish and comfortable.

- Sleeps 6 guests across three Luxury Farm Suites
- All suites enjoy direct access to Farmstead's reception, dining area, treatment room, gym and The Farmhouse via illuminated walkways
- Guide's room available
- Communal bar
- Treatment room
- Luxury Farm Suites welcome children over 10 years old

## WATERSIDE

A modern luxury safari lodge that combines thatch, glass and steel. This spacious sanctuary brings a splash of colour to Royal Malewane.

- Sleeps 16 guests across four Luxury Suites, two Aloe Rooms and one Baobab Suite
- All suites enjoy direct access to Waterside's reception, dining areas, library, family games room, spa, gym and yoga room via illuminated pathways
- Guide's room available
- Outdoor bar
- Wine cellar
- Reflections Spa
- Children of all ages are welcome

## MASIYA'S CAMP

Masiya's Camp offers a unique experience under canvas in an ultra-modern style, with every comfort one could imagine.

- Sleeps 12 guests across six Luxury Tented Suites
- All suites enjoy direct access to Masiya Camp's dining areas, boutique, pool and reception
- Communal bar and lounge
- Children aged 10 and above are welcome

## Private Villa Options

## AFRICA HOUSE

- Sleeps up to 12 guests
- A two-minute drive from Malewane Lodge
- Private services (private chef, host and private safari vehicle with a Guide and Tracker)
- Children of all ages are welcome

## FARMHOUSE

- Sleeps 6 adults and 2 children
- Private services (private chef, host and private safari vehicle with a Guide and Tracker)
- Direct access to Farmstead and its facilities via illuminated pathways
- Children of all ages are welcome

## WATERSIDE HOUSE

- Sleeps up to 8 guests
- Private services (private chef, host and private safari vehicle with a Guide and Tracker)
- Direct access to Waterside and its facilities via illuminated pathways
- Children of all ages are welcome