



  
THE ROYAL PORTFOLIO  
**ROYAL MALEWANE**

---

*Masiya's Camp*  
FACT SHEET

*Opening April 2025*



## CONTENTS

WELCOME TO MASIYA'S CAMP	1
LODGES AND VILLAS MAP	3
MASIYA'S CAMP LODGE MAP	4
ACCOMMODATION	5
DESIGNED TO INSPIRE	7
SHARED SPACES	8
ACTIVITIES	9
EXCURSIONS	10
GUIDING TEAM	11
DINING	12
WHAT TO PACK	13
COMMUNITY AND CONSERVATION	14
SUSTAINABILITY	15
GETTING TO MASIYA'S CAMP	16
GOOD TO KNOW	17
ROYAL MALEWANE LODGES COMPARISON	18
CONTACT	19



## WELCOME TO *Masiya's Camp*

**In honour of Wilson Masiya, a legendary master tracker at Royal Malewane, this tented camp captures the essence of his fearless spirit and intimate connection with the African wilderness.**

Located in the heart of the Greater Kruger National Park, Masiya's Camp offers guests a luxurious, immersive safari experience, combining world-class comfort with profound respect for nature.

[Click here](#) to read the story of Masiya's Camp.

Masiya's Camp offers a unique experience under canvas with an ultra-modern style with every creature comfort one could imagine. Accommodation includes six tented suites – each with a private swimming pool looking out in the vast wilderness.







3D RENDER OF MASIYA'S CAMP

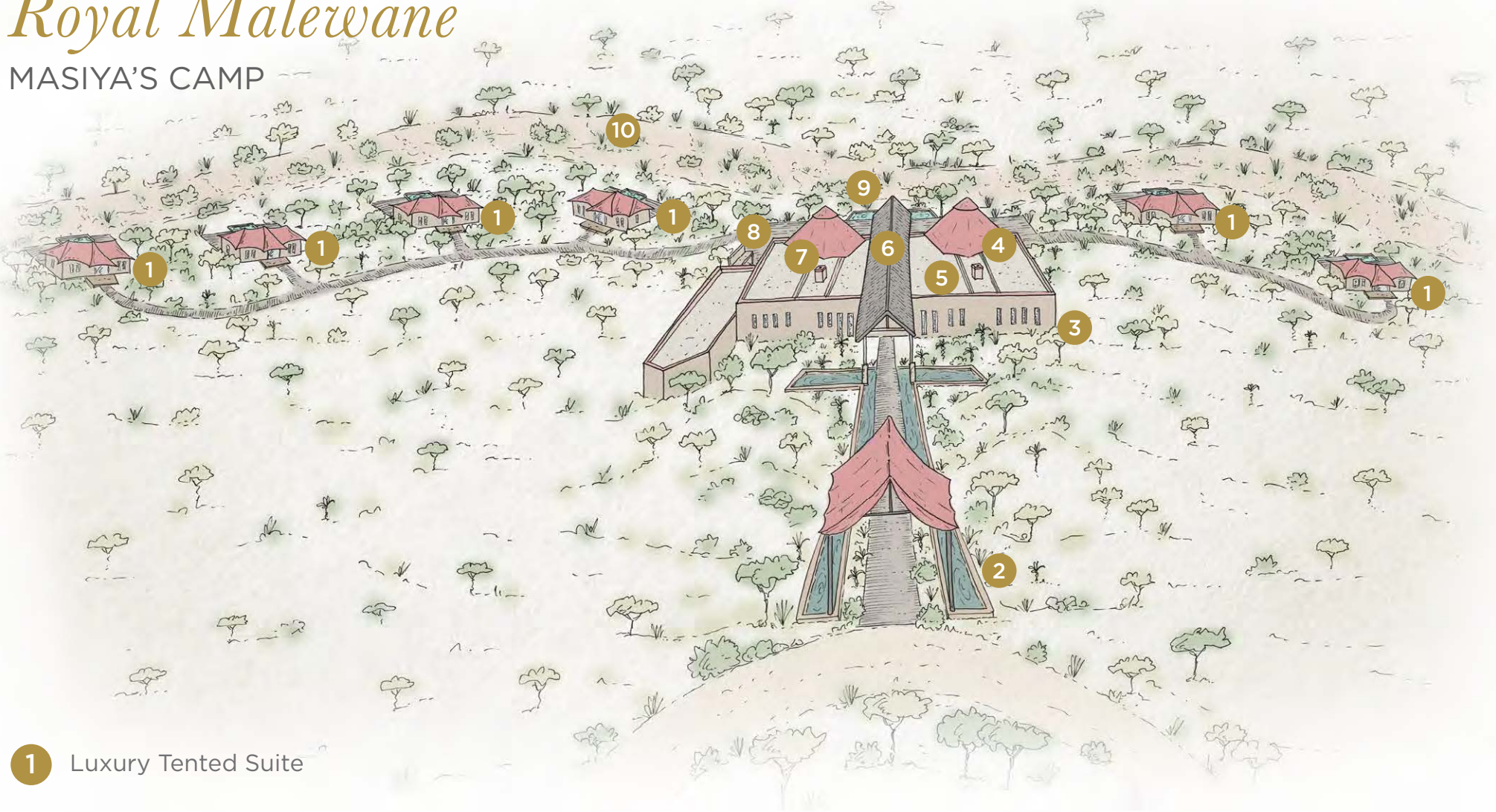


## *Royal Malewane Lodges and Villas*



# Royal Malerwane

## MASIYA'S CAMP



1 Luxury Tented Suite

2 Arrival Circle

3 Main Camp

4 Lounge Area

5 Boutique

6 Bar

7 Dining Area

8 Outdoor Cooking Station

9 Swimming Pool

10 Riverbed



# Accommodation

## *6 x Luxury Tented Suites*

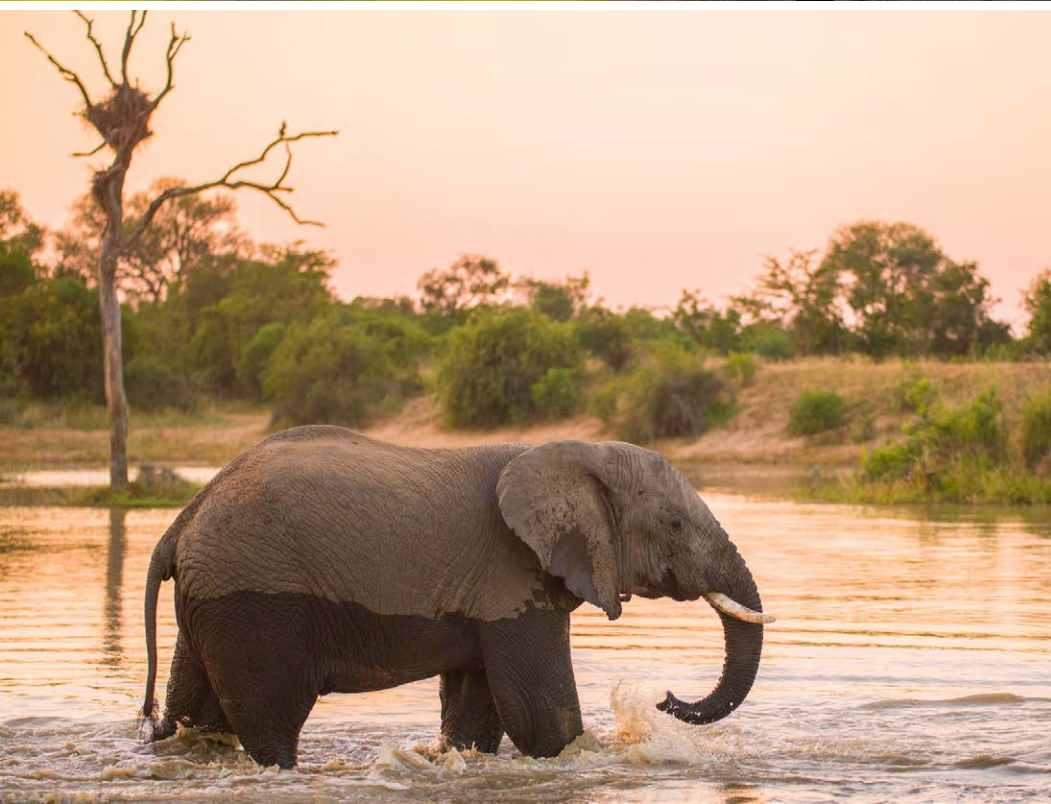
Masiya's Camp comprises six uniquely designed canvas-draped suites, each offering a private and tranquil retreat. Each Luxury Tented Suite is 100m<sup>2</sup> (1,076f<sup>2</sup>) and 230m<sup>2</sup> (2,476f<sup>2</sup>) including the outdoor spaces.

### ALL SUITES ARE EQUIPPED WITH:

- King-sized beds which can be split into two three-quarter-sized beds
- En-suite bathrooms with freestanding baths, indoor/outdoor showers, and double vanities
- Private decks each with a heated plunge pool, outdoor lounge and dining space
- Additional features include a mini-bar, hidden pop-up smart television with satellite channels and streaming services, ceiling speakers, air conditioning, ceiling fans, underfloor heating and Wi-Fi connectivity
- These spacious suites have a dedicated lounge area with views of the bushveld









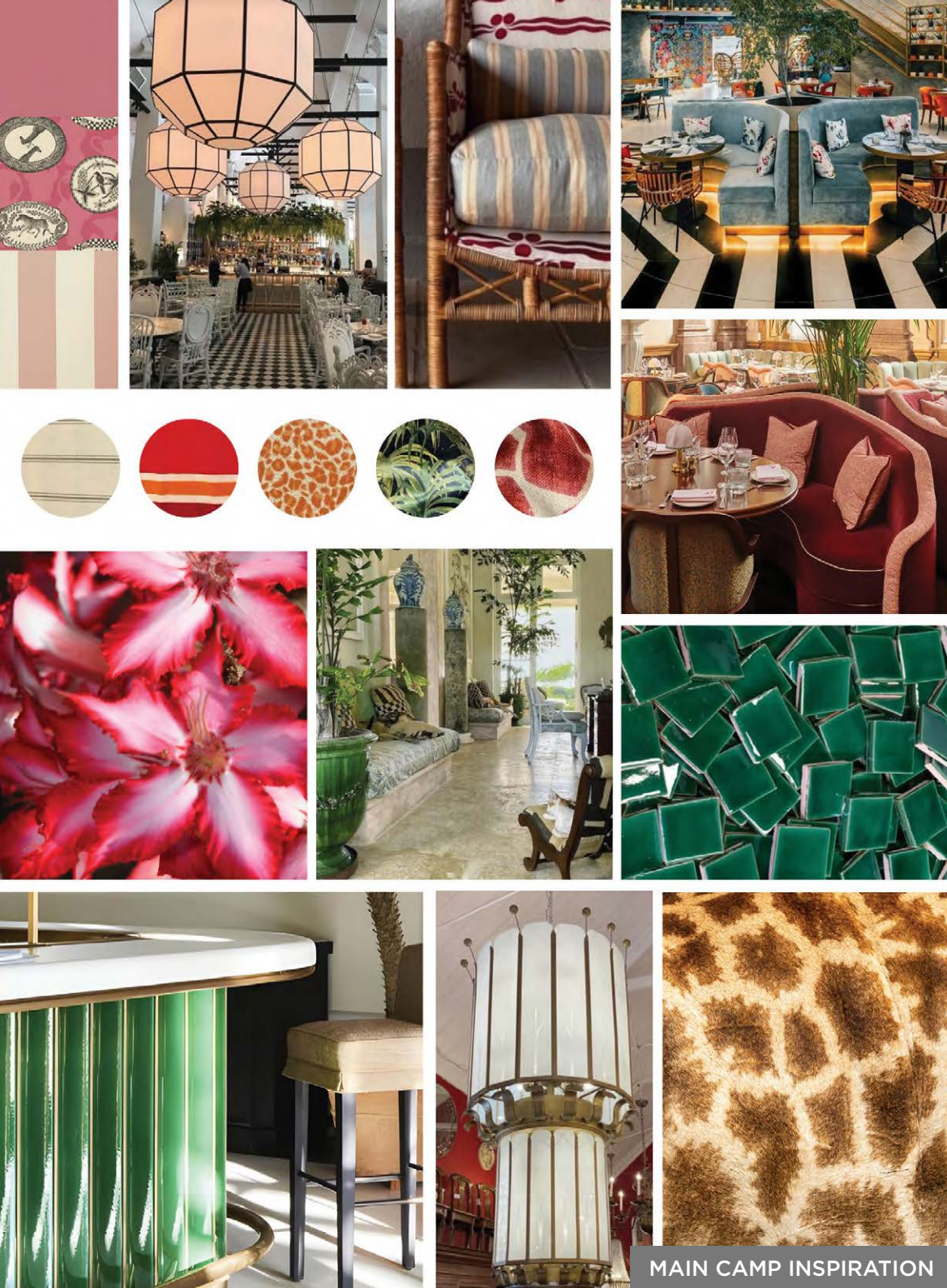


Each tented suite exudes an elegant yet inviting ambience, featuring romantic interior draping and bespoke Indian doors that juxtapose global aesthetics with the African wilderness.

The distinctive theme of each tented suite elevates the experience. From feminine pinks and vintage florals to Asian-inspired blues and reds, the designs cater to diverse tastes. Marrakech-style pots, earthy greens, and bold, vibrant artwork infuse the interiors with cultural and artistic flair.

The décor harmoniously blends luxury with nature, ensuring every detail contributes to an unparalleled sense of place and indulgence.





## *Shared Spaces*

The guest communal area of Masiya's Camp features open-plan spaces designed for relaxation and connection with nature. Large floor-to-ceiling glass panels open to bring the outside in, creating a fully immersive experience in the bush.

- A dining area under canvas with vibrant interiors, an interactive kitchen, a pizza oven, and an outdoor braai/barbecue cooking station
- A lounge tent area with glass stacking doors merge indoor and outdoor spaces, complemented by bespoke furnishings
- Central heated swimming pool with loungers for relaxation and looking out into the wilderness
- A boutique with curated items inspired by local artistry for sale, handpicked by founder Liz Biden
- The green-tiled bar is located in the heart of camp between the communal lounge and dining area, offering 360-degree views



# Activities

**Inviting endless opportunities to reconnect and experience a sense of togetherness in this pristine natural setting, guests can choose how to spend their days.**

- Twice daily game drives with the most accomplished guiding team in Africa
- Discover the finer details of the bush while on foot during a bush walk
- Soothing wellness treatments at Royal Waters Spa at Malewane Lodge, close by
- Photographic safaris
- World-class wine tastings
- Make use of the gym facilities at Malewane Lodge

## CONSERVATION ACTIVITIES

- Visit Royal Malewane's Conservation and Research Centre
- Rhino dehorning experience
- Helicopter patrol flight
- APNR Ground-hornbill project experience
- Elephants Alive experience
- K9 Unit demonstration
- EWT wild dog conservation experience

*For more information on these conservation experiences, click [here](#). All conservation activities are subject to operational availability.*

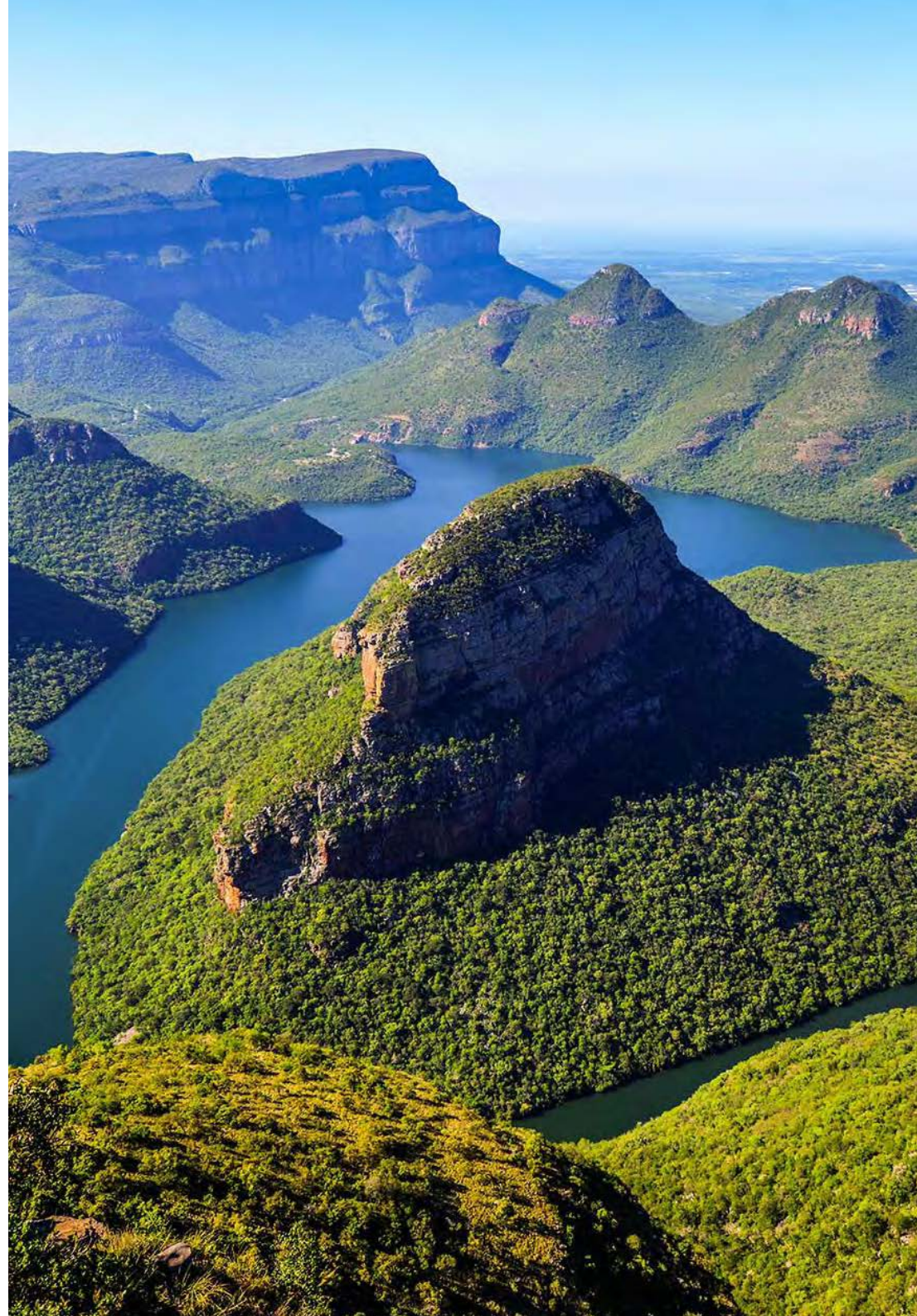




## *Excursions*

If you feel like venturing further afield, our Reservations team can arrange the following activities at an additional charge.

- Helicopter flights over the Blyde River Canyon, the world's deepest green canyon
- Golf at Africa's most exclusive bushveld golf course – Leopard Creek
- A visit to the Timbavati Museum
- A visit to the Moholoholo Wildlife Rehabilitation Centre
- Visit Langutelani Crèche, Sigagule Crèche, or Sihlekisi Primary School in the local community, each supported by The Royal Portfolio Foundation





# *The Most Qualified Guiding Team*

IN AFRICA

Royal Malewane is often referred to as the 'Harvard of the Bush'. That's because of the guiding team's unyielding passion for learning and their ambition not just to be the best, but to raise the standards of the industry as a whole. The Guides at Royal Malewane strive to achieve the highest Field Guides Association of Southern Africa (FGASA) qualifications, as well as advanced rifle handling certificates.

These qualifications ensure that you will enjoy an exceptional game-viewing experience – not only while on game drive, but also on foot during guided bush walks. At the pinnacle of the professional guiding qualifications are the Special Knowledge & Skills (SKS) Qualifications such as Dangerous Game and Birding. Very few guides in Africa achieve these qualifications which require extensive knowledge as well as technical skills - the team at Royal Malewane has these attributes in abundance.

Further to the impressive qualifications above, is the FGASA Scout status. There are only 13 Professional Field Guides with FGASA Scout status in the world, and two of those, are on the Royal Malewane team. We are also very proud to have two of only 11 living Master Trackers in the world on our team, and they are the only two working in the Greater Kruger region. Wilson Masiya, who passed away in 2015, was a legendary Master Tracker at Royal Malewane who left a remarkable guiding legacy.

Collectively, our guiding team brings over 300 years of combined African bush experience, ensuring exceptional safari experiences for our guests.





## Dining

**Dining at Masiya's Camp is a celebration of creativity and unique culinary experiences. At the heart of the camp's dining tent is the interactive kitchen, where the preparation of meals by our expert chefs unfolds.**

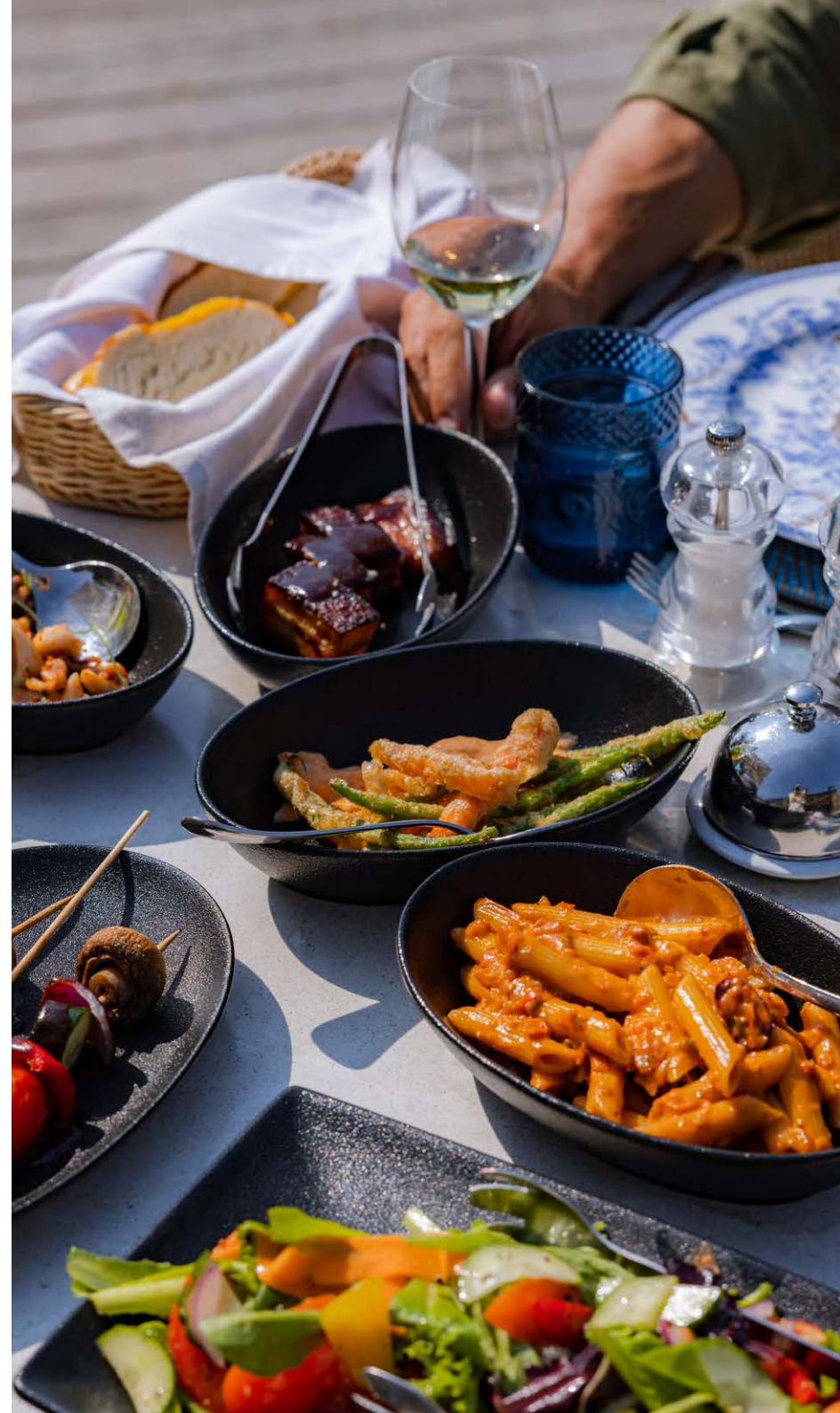
With a countertop for live cooking demonstrations and outdoor features like a wood-fired pizza oven and braai (barbecue) station, every meal combines the rustic charm of the bush with contemporary culinary artistry.

The camp's culinary philosophy is inspired by Royal Malewane's renowned approach, which centres on fresh, seasonal ingredients. Each dish is designed to reflect the flavours of the region, blending local inspiration with world-class techniques.

The various spaces within the camp each offer a unique dining perspective - whether gathered around the tables in the main dining area, enjoying the glow of the outdoor cooking stations, or dining on your own private deck - meals are an invitation to connect.

From a casual pizza under the stars to an elaborate romantic dinner by the fire, dining at Masiya's Camp is an unforgettable journey of flavours and experiences.

*Please speak to us about any dietary requirements, our private chefs, and our exclusive-use kosher offering*





# | *What to Pack*

The Golden Rule to remember is that safari should always be more about comfort than style; however, it is very possible to achieve both. Pack very minimal and lightweight, clothing in neutral, earth colours. Since Royal Malewane provides laundry services, packing light should be easy.

- A good pair of walking shoes and socks (for bush walks)
- Sandals for around the lodge and in your room
- Closed shoes for the evenings
- Long sleeve and mid-sleeve cotton shirts for layering
- Shorts - two or three pairs for midday wear
- Sleeveless shirts for warmer days
- Swimming costume
- A wind breaker
- Active wear (if wanting to use our gym)
- A sun hat or two (a wide brimmed hat that has a string)
- Sunglasses and a light scarf
- High SPF sunblock and mosquito repellent
- Camera, video camera, binoculars, spare memory cards, and chargers

## ADDITIONAL ITEMS TO PACK FOR WINTER:

- |                          |  |
|--------------------------|--|
| • A warm jacket          | • A beanie and scarf for morning drives          |
| • Cotton shirts or vests | • A few long sleeve shirts                       |
| • One or two jumpers     | • A few long pants                               |
| • Thermal undergarments  | • Walking shoes, sandals and boots               |
| • Winter evening wear    | • A lightweight rain jacket for the rainy season |







THE CONSERVATION AND RESEARCH CENTRE

## *Community and Conservation*

Aligned with The Royal Portfolio's ethos, Royal Malewane prioritises community upliftment and environmental conservation.

### COMMUNITY

- We support community development projects
- We're committed to improving crèche and school facilities in nearby villages
- Guests have the chance to visit the local crèches and schools we support

### CONSERVATION

- Thornybush's K9 anti-poaching dog unit is making the Greater Kruger area safer for wildlife
- The Royal Portfolio Foundation is committed to supporting various conservation projects in the Greater Kruger, such as the APNR Ground Hornbill Project, EWT Birds of Prey Programme and the EWT Wild Dogs Project

### THE CONSERVATION AND RESEARCH CENTRE

The Royal Malewane Conservation & Research Centre (CRC) is a hub for researchers, scientists, and guests who share our passion for conservation. It is a space where professionals can share their findings through lectures and discussions.

The CRC will inform and empower our goal of preserving the Greater Kruger ecosystem; it fosters a deeper understanding of the challenges we face and how we plan to overcome them.





## *Sustainability*

### HYDRONIC HEATING AND COOLING WATER SYSTEM

At our most recently built lodges and villas, we've invested in an innovative, integrated heating system that uses solar energy and hydronics to heat water, pools, towel rails, and underfloor heating, while also powering the air conditioning.

### ADDITIONAL PROJECTS

- We're reducing the amount of water we use
- We're limiting our carbon footprint by choosing energy-efficient devices
- We're phasing out plastic water bottles in favour of reusable glass bottles



# GETTING TO *Masiya's Camp*

## TRAVEL BY AIR

### **From Johannesburg (O.R. Tambo International Airport -JNB):**

SA Airlink and CemAir fly daily to Hoedspruit Airport (HDS). Bookings can be made directly online.

*Road transfers can be arranged by Royal Malewane and take approximately 35 minutes in a comfortable air-conditioned vehicle.*

### **From Cape Town International Airport (CPT):**

SA Airlink and CemAir fly daily to Hoedspruit Airport (HDS). Bookings can be made directly online.

### **Chartered Flights:**

You can also charter your own flight directly to our private airstrip. Our Reservations Team can assist with domestic flights and private charters and road transfers.

## AIRLINE DETAILS

### **CemAir:**

[www.flycemair.co.za/](http://www.flycemair.co.za/)  
+27 86 123 6247

### **SA Airlink:**

[www.flyairlink.com/en/za/](http://www.flyairlink.com/en/za/)  
+27 11 451 7300





# *Good to Know*

## GENERAL

- We have a 24-hour staffed switchboard
- Babysitting services can be arranged at an additional cost
- Weddings can also be arranged at Royal Malewane
- Private safari vehicles can be arranged on request, subject to availability and at additional cost
- We accept MasterCard, Visa, Diners Club and American Express Credit Cards
- We welcome families with children aged 10 and older at Masiya's Camp

## INCLUDED IN STAY

- |                                 |   |
|---------------------------------|---|
| • Accommodation                 | • Local beverages & house wines                 |
| • All meals & snacks            | • Laundry service                               |
| • All coffees & speciality teas | • Game drive and bush walks                     |
| • Mini-bar                      | • Transfers to and from Royal Malewane Airstrip |
| • Wi-Fi                         |   |

## EXCLUSIONS

- |                          |                                     |
|--------------------------|-------------------------------------|
| • Boutique purchases     | • Conservation & Community Levy     |
| • Telephone calls        | • Transfers to and from the reserve |
| • Kosher meals           | • Private safari vehicle            |
| • Photographic equipment |                                     |





# Royal Malewane Lodges Comparison

## MALEWANE LODGE

A classic and traditional bush-style lodge, brimming with old-world elegance and timeless luxury. This is the original Biden Family homestead.

- Sleeps 20 guests across six Luxury Suites and two Royal Suites
- All suites enjoy direct access to Malewane Lodge's reception, dining areas, library, spa and gym via illuminated pathways
- Guide's room available
- Masiya bar and Wine Cellar
- The Royal Waters Spa
- Luxury Suites welcome children over 10 years old
- Royal Suites welcome children of all ages and offer private services

## FARMSTEAD

A contemporary-style lodge with sweeping vistas over the bushveld. A more intimate and private space that is both stylish and comfortable.

- Sleeps 6 guests across three Luxury Farm Suites
- All suites enjoy direct access to Farmstead's reception, dining area, treatment room, gym and The Farmhouse via illuminated walkways
- Guide's room available
- Communal bar
- Treatment room
- Luxury Farm Suites welcome children over 10 years old

## WATERSIDE

A modern luxury safari lodge that combines thatch, glass and steel. This spacious sanctuary brings a splash of colour to Royal Malewane.

- Sleeps 16 guests across four Luxury Suites, two Aloe Rooms and one Baobab Suite
- All suites enjoy direct access to Waterside's reception, dining areas, library, family games room, spa, gym and yoga room via illuminated pathways
- Guide's room available
- Outdoor bar
- Wine cellar
- Reflections Spa
- Children of all ages are welcome

## MASIYA'S CAMP

Masiya's Camp offers a unique experience under canvas in an ultra-modern style, with every comfort one could imagine.

- Sleeps 12 guests across six Luxury Tented Suites
- All suites enjoy direct access to Masiya Camp's dining areas, boutique, pool and reception
- Communal bar and lounge
- Children aged 10 and above are welcome

## Private Villa Options

## AFRICA HOUSE

- Sleeps up to 12 guests
- A two-minute drive from Malewane Lodge
- Private services (private chef, host and private safari vehicle with a Guide and Tracker)
- Children of all ages are welcome

## FARMHOUSE

- Sleeps 6 adults and 2 children
- Private services (private chef, host and private safari vehicle with a Guide and Tracker)
- Direct access to Farmstead and its facilities via illuminated pathways
- Children of all ages are welcome

## WATERSIDE HOUSE

- Sleeps up to 8 guests
- Private services (private chef, host and private safari vehicle with a Guide and Tracker)
- Direct access to Waterside and its facilities via illuminated pathways
- Children of all ages are welcome