



DISCOVER MASAI MARA

# &Beyond Kichwa Tembo Tented Camp

An authentic Kenyan safari experience; contemporary camp with a family feel; the perfect gateway to experience a wildlife adventure, celebrate community and be immersed in Maasai culture.



DISCOVER MASAI MARA  
&Beyond Kichwa Tembo Camp

# Why stay?

## 1 CONTEMPORARY SAFARI WITH A FAMILY FEEL

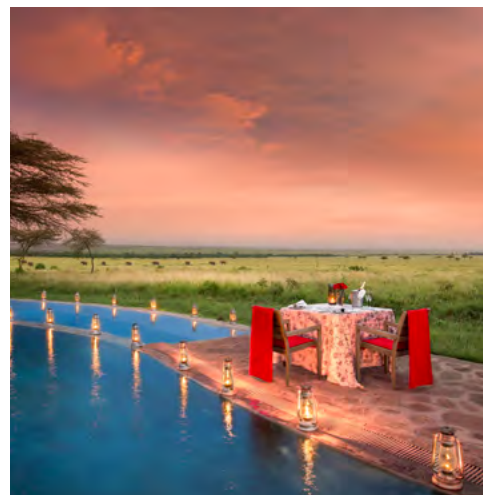
Steeped in the aura of classical safari, the camp showcases a simple yet contemporary style. Celebrating the romance and nostalgia of the Mara, this is a camp with a warm family feeling, where Kenyan hospitality abounds. The generously sized lodge swimming pool is set among the trees and surrounded by lush lawns and breathtaking views and the split-level dining area has been designed around an interactive kitchen and vegetable garden, making food an integral part of the safari experience.

## 2 GREAT FOR GROUPS OR COUPLES

Kichwa Tembo's selection of 40 guest tents, rim-flow lodge pool with views across the Masai Mara, spacious split-level guest area and legendary Kenyan hospitality, make it an ideal and stylish safari destination for groups, family get-togethers or more formal conference events. For couples, the team ensures they have privacy with exclusive dining location options and are able to enjoy the ambiance of the lodge or escape to their comfortable and spacious tent. Set on a private concession, the camp also offers seclusion and abundant wildlife. Our team is ready to tailormake any gathering if planned in advance, from menu to functions and celebrations.

## 3 MAGNIFICENT MASAI MARA LOCATION

&Beyond Kichwa Tembo Tented Camp is situated on the western border of the game rich, Masai Mara National Reserve, in the Mara Triangle – the most productive part of the Mara ecosystem. Meaning 'head of the elephant' in Kiswahili, &Beyond Kichwa Tembo Tented Camp is set on a private concession leased from Maasai landlords. Lying at the base of the Olololo Escarpment just below the area where Out of Africa's most famous scene was shot, the camp overlooks the plains of the Masai Mara with game frequently viewed in front of the camp. The location, on a private concession not only has some of the best views in the Mara, but enables guests to take part in activities such as walks and night drives that are not available in the national reserve.



Great location, great views, lovely spacious "tents", friendly staff, always ready to help, delicious cuisine.



&BEYOND GUEST

DISCOVER MASAI MARA  
& Beyond Kichwa Tembo Camp

# Camp amenities



1

## CAMP POOL

The generously sized lodge swimming pool is set among the trees and surrounded by lush lawns and spectacular views out across the Mara plains.



2

## TUSKER BAR

Named after the legendary Kenyan beer, Tusker, this bar is the central hub of the camp. Guests meet here for tea before their afternoon drive, and drinks with their guides in the evening before dinner or a Maasai performance.



3

## MASSAGE TENT

The Kichwa Tembo massage tent is set up to enable either a single or couples treatment. Our therapists are trained on Healing Earth products and treatments, a naturally sourced African wellness brand.



4

## SAFARI SHOP

A well-stocked and sizeable Safari Shop is filled with beautiful, locally-sourced home décor items, handicrafts, and fashion items. Don't leave without authentic beaded Maasai jewellery and décor pieces, sourced from the local community of Saparingo, and local Kenyan hand-knitted toys from Kenana Knitters.



5

## INTERACTIVE KITCHEN

The spacious interactive kitchen brings a cheerful atmosphere to the lodge, allowing guests to see their mouth-watering meals being prepared, quite literally, from the lodge vegetable garden (shamba) to table.



6

## CONFERENCE FACILITIES

We have various areas where we are able to set up conference facilities, the main area being the space above the bar area. We have a projector and Wi-Fi and interactive TV room.

DISCOVER MASAI MARA  
&Beyond Kichwa Tembo Camp



Masai Mara  
RESERVE

&BEYOND  
Kichwa Tembo

- Road
- Footpaths
- - - Perimeter fence
- Superior View tents
- Superior tents

DISCOVER MASAI MARA  
& Beyond Kichwa Tembo Camp

# Camp overview

## CAMP

Maximum number of guests	80
Number of rooms	34 Tents: 26 Superior Tents and 8 Superior View Tents
Family accommodation	3 Family Tents with interleading walkways
Pilot / Guide accommodation	Available
Room types	Tented Suites
Distance between rooms	6 – 10 m / 20 – 33 ft
Check-in / Check-out times	14h00 / 10h00

## DINING

Food / Dietary options	Kosher not available. Halaal and other special dietary requests available: <b>please book in advance</b>
Private butler service	No
Plated service	Buffet and interactive kitchen
Private dining	Yes

## PAYMENT TYPES ACCEPTED

Credit cards accepted	Mastercard and Visa
Currency	USD are widely used, however, notes dated prior to 2006 are not accepted

## FACILITIES

Power	24-hour power
Internet access	Yes, Wi-Fi throughout
Wine store or cellar	No
Boma	Yes
Interactive kitchen	Yes
Swimming pool	Yes, lodge swimming pool (not heated)
Wellness offering	Healing Earth wellness treatments offered in the massage tent
Fitness	No
Conference facilities	Yes
Weddings and blessings	Can be organised on request - please speak to your travel specialist
Wheelchair accessibility	Possible with assistance in certain cases
Complimentary laundry service	Yes
&Beyond Safari Shop	Yes

## OTHER

Vehicle type	6-seater and 8-seater semi-open safari vehicles
Private 4x4 safari vehicle	Depending on availability and at an additional cost
Activity inclusion	Safari game drive only



DISCOVER MASAI MARA  
&Beyond Kichwa Tembo Camp

# Inclusions

## RATE INCLUDES

Accommodation	✓
Three meals daily	✓
Soft drinks, house wines, local brand spirit and beers, teas and coffees	✓
Refreshments on safari game drives	✓
Laundry	✓
One complimentary pair of SWAROVSKI OPTIK CL Companion 8x30 binoculars per tent to share during your stay	✓
Emergency medical evacuation insurance	✓
Transfers to / from the lodge airstrip	✓
WILDchild programme (excluding goodie bag)	✓
Twice-daily safari game drives	✓
Maasai performance*	✓
Wild Impact community visit*	✓

## RATE EXCLUDES

Telephone calls	✗
Gratuities	✗
Personal items	✗
Safari Shop purchases	✗
Champagne, cognac, fine wines, premium brand spirits, and cigars	✗
National Reserve fees	✗
WILDchild goodie bag	✗
Hot air balloon safari	✗
Night drives	✗
Bush walks	✗
Community visit to a Maasai boma	✗
Maasai dancers for private functions	✗
Healing Earth wellness treatments	✗
Weddings and blessings	✗

*\*These activities may incur an additional charge for groups  
Some experiences are weather dependent*

The service was fabulous. They have the full range of game drive experiences, social and educational activities.

&BEYOND GUEST



DISCOVER MASAI MARA  
&Beyond Kichwa Tembo Camp

# WILDchild

Travel to Kenya is recommended for children eight years or older. Children five years and younger cannot participate in regular game drives; children aged six to 11 can participate in regular game drives at the lodge manager's discretion. Please note that, due to the fact that the lodge is not fenced off, children are required to have an adult accompanying them at all times, as well as at the swimming pool.

## WILDCHILD AT KICHWA TEMBO

Children visiting the camp can take advantage of the fun-filled and interactive WILDchild programme (available at an additional cost) where little ones can participate in the following:

- Join a Maasai bow and arrow competition
- Learn how to make a fire the traditional Maasai way
- Create a beautiful beaded artwork with the Maasai women
- Enjoy a range of traditional Maasai games
- Go on a forest walk with a guide, looking for birds and animal spoor and tracks
- Identify butterflies with a guide
- Play soccer with the camp's team

**A series of unforgettable moments for the whole family which forge strong bonds between our young guests, our planet and its people.**

## CHILD POLICY\*

0 - 5 years	Game drives only in a private vehicle or children's game drives (avoiding lion, leopard and elephant) outside of normal game drive time on request. No walks outside of the lodge
6 - 11 years	Game drives only at discretion of lodge manager. No walks outside of the lodge
12 - 15 years	Game drives. No walks outside of the lodge
16 years and above	All activities

\*A private vehicle can be booked when staying at &Beyond Kichwa Tembo that allows the drives to be tailored to suit the ages of the children (subject to availability and at an additional cost)

## CHILDMINDING

While we don't have trained childminders, we can offer the services of certain staff members who are wonderful with children. This will be at an additional cost.

**Please note:** The camp is not fenced off and children are required to have an adult accompanying them at all times





&BEYOND KICHWA TEMBO TENTED CAMP



&BEYOND

# Contemporary tented accommodation

&Beyond Kichwa Tembo Tented Camp is a perfect blend of contemporary style and classic safari ambiance. Providing an unsurpassed wildlife experience, the camp is perfect for families and groups.





DISCOVER MASAI MARA  
Beyond Kichwa Tembo Camp Accommodation

SUPERIOR VIEW TENTS

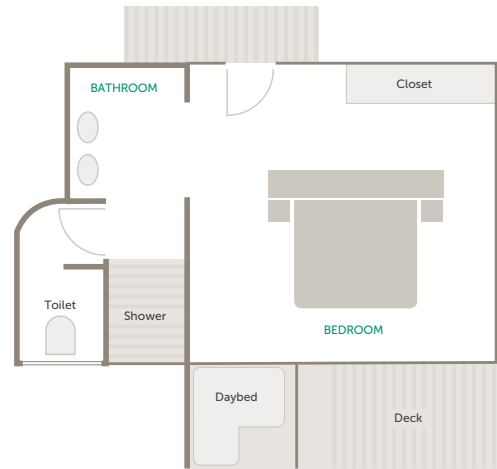
8 Tents / Max. 16 guests



**PANORAMIC MARA VIEWS**  
Superior View Tents offer sweeping views of the Masai Mara and surrounds. Each tent features beautiful Maasai inspired interiors that showcase a simple and contemporary use of local materials. Boasting exceptionally beautiful visions of the nearby escarpment, look forward to uninterrupted Masai Mara views that delight beyond the expected.

ROOM FACILITIES

Room size (square meters)	52 m <sup>2</sup> (560 ft <sup>2</sup> )
Private veranda	Yes
Personal bar	No
Personal coffee station	No
Air conditioning / heating	No
Fans	Yes, floor fans provided
Mosquito nets	No, sealed tent
Bath	No
Shower	Indoor shower
Seperate WC	Yes
Telephone	Yes
Hairdryer	Yes
Internet access	Yes
In-room safe	Yes
Plug type	220V AC plug points in rooms   Plug type: G British – BS 1363 USB port available
Triple bed option	3 (children 16 years and younger)
Twin bed option	All convertible to twin or double
Wheelchair accessibility	Possible with assistance in certain cases



Typical Superior View Tent layout

DISCOVER MASAI MARA  
Beyond Kichwa Tembo Camp Accommodation

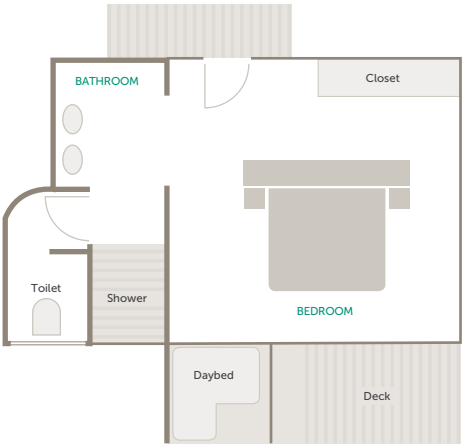
SUPERIOR TENTS

26 Tents / Max. 52 guests



AMIDST THE TREES

The Superior Tents feature beautiful Maasai inspired interiors that showcase a simple and contemporary use of local materials. Oversized beds are perfectly positioned to make the most of the views, while stained cypress wood furniture combine with tribal decorative elements, making for an authentic display of the culture. Some of these tents feature partial views of the Mara through the forest canopy, others are situated further back within the forest, excellent for bird lovers, while the rest look out onto the nearby escarpment.



Typical Superior Tent layout

ROOM FACILITIES

Room size (square meters)	52 m <sup>2</sup> (560 ft <sup>2</sup> )
Private veranda	Yes
Personal bar	No
Personal coffee station	No
Air conditioning / heating	No
Fans	Yes, floor fans provided
Mosquito nets	No, sealed tent
Bath	No
Shower	Indoor shower
Seperate WC	Yes
Telephone	Yes
Hairdryer	Yes
Internet access	Yes
In-room safe	Yes
Plug type	220V AC plug points in rooms   Plug type: G British – BS 1363 USB port available
Triple bed option	3 (children 16 years and younger)
Twin bed option	All convertible to twin or double
Wheelchair accessibility	Possible with assistance in certain cases



DISCOVER MASAI MARA  
Beyond Kichwa Tembo Camp Accommodation

SUPERIOR FAMILY TENTS

3 Tents / Max. 2 adults & 2 children per Family Tent (3 children on request)

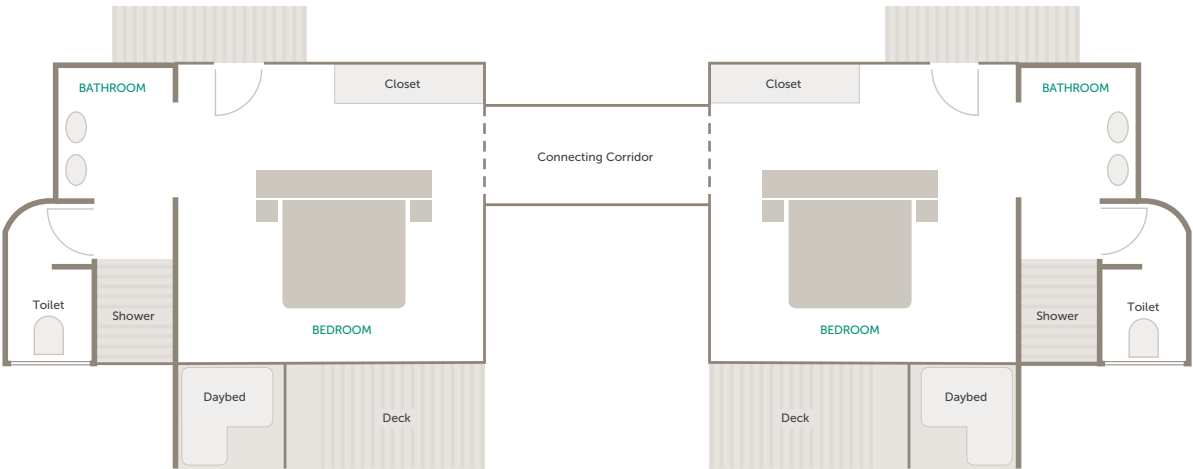


FAMILY ADVENTURE  
ABOUNDS

Kichwa Tembo has three Superior Family Tents comprises two interconnected tents with an ensuite bathroom and private veranda. Each Superior Family Tent can accommodate two adults and two children (three at special request) and are ideal for families looking to spend time together experiencing the African bush in unimaginable ways.

ROOM FACILITIES

Room size (square meters)	115 m <sup>2</sup> (1 238 ft <sup>2</sup> )
Private veranda	Yes
Personal bar	No
Personal coffee station	No
Air conditioning / heating	No
Fans	Yes, floor fans provided
Mosquito nets	No, sealed tent
Bath	No
Shower	Indoor shower
Seperate WC	Yes
Telephone	Yes
Hairdryer	Yes
Internet access	Yes
In-room safe	Yes
Plug type	220V AC plug points in rooms   Plug type: G British – BS 1363 USB port available
Triple bed option	3 (children 16 years and younger) in Superior Tents only
Twin bed option	All convertible to twin or double
Interleading walkway	Yes
Wheelchair accessibility	Possible with assistance in certain cases



Typical Superior Family Tent layout

DISCOVER MASAI MARA  
Beyond Kichwa Tembo Camp Accommodation

# Accommodation overview

	SUPERIOR VIEW TENT	SUPERIOR TENT	SUPERIOR FAMILY TENT
Room size (square meters)	52 m² (560 ft²)	52 m² (560 ft²)	115 m² (1 238 ft²)
Private veranda	Yes	Yes	Yes
Personal bar	No	No	No
Personal coffee station	No	No	No
Air conditioning / heating	No	No	No
Fans	Yes, floor fans provided	Yes, floor fans provided	Yes, floor fans provided
Mosquito nets	No, sealed tent	No, sealed tent	No, sealed tent
Bath	No	No	No
Shower	Indoor shower	Indoor shower	Indoor shower
Seperate WC	Yes	Yes	Yes
Telephone	Yes	Yes	Yes
Hairdryer	Yes	Yes	Yes
Internet access	Yes	Yes	Yes
In-room safe	Yes	Yes	Yes
Plug type	220V AC plug points in rooms Plug type: G British – BS 1363 USB port available	220V AC plug points in rooms Plug type: G British – BS 1363 USB port available	220V AC plug points in rooms Plug type: G British – BS 1363 USB port available
Distance from main guest area	20 - 100 m (65 - 330 ft)	20 - 300 m (65 - 980 ft)	20 - 300 m (65 - 980 ft)
Triple bed option	3 only (children 16 years and younger)	3 only (children 16 years and younger)	3 only (children 16 years and younger)
Twin bed option	All convertible to twin or double	All convertible to twin or double	All convertible to twin or double





&BEYOND

DISCOVER MASAI MARA

# Adventures of a lifetime

Classic safari experiences set against a backdrop of expansive landscapes, year-round wildlife theatre, Great Migration drama and the traditional world of the Maasai that is woven into these wild spaces.



DISCOVER MASAI MARA  
Adventures of a Lifetime

# Experiences and highlights



1

## SAFARI GAME DRIVES

Spectacular landscapes filled with an abundance of wildlife make for unforgettable game drives in the Masai Mara is the quintessential African safari experience, with customised, open vehicles where guests can expect to encounter large numbers of plains game and spectacular predator interaction year-round.



2

## HOT AIR BALLOON SAFARI

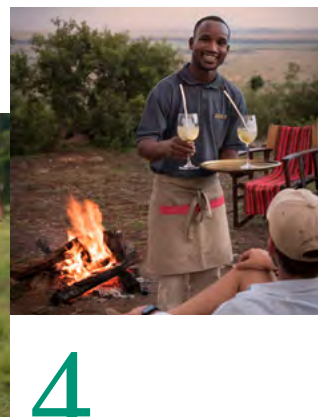
Guests will have a bird's-eye view of the Masai Mara National Reserve as they take to the dawn skies on a hot air balloon safari and float soundlessly over the boundless plains. The flight is about an hour and once landed, champagne and a full English bush breakfast in true 'Out of Africa' style awaits.



3

## BUSH WALKS

For those guests looking for fresh and thrilling on-the-ground views, this privately-guided activity offers the perfect opportunity to discover a multitude of natural wonders: following wildlife trails, discovering the complexities of tracking and learning to interpret the signs and sounds of the bush. Courtesy-use SWAROVSKI OPTIK binoculars will be an indispensable bonus.



4

## BUSH DINING

Revel in the landscapes of Africa as you savour a meal served just like African explorers of old. Enjoy an open-air breakfast or al fresco dinner. Your every whim is taken care of, and your table set up in the wilds of Africa will make for an unforgettable dining experience.



5

## MAASAI VILLAGE VISIT

Immerse yourself in authentic Maasai culture with a visit to a traditional village. Witness the daily rituals of these semi-nomadic and pastoralist people and their hustle and bustle in local life. Browse through the Maasai Craft Centre and purchase artefacts made by those you have encountered. All proceeds from this go directly to the community.

## OTHER ACTIVITIES

### NIGHT DRIVES ON THE PRIVATE CONCESSION

Guests can experience night drives on a private concession bordering the Masai Mara National Reserve. As the sun sinks, the African bush comes to life with predators and other nocturnal creatures

### AL FRESCO PICNIC IN THE AFRICAN BUSH

With a five-star picnic lunch or breakfast, guests have the option to spend the day exploring the Masai Mara. Our guide will select a spot and set up a picnic table

### MAASAI BLESSINGS OR CELEBRATIONS

A unique and special place to celebrate significant moments in life. We welcome guests that would like to revel in weddings, blessings and engagements

### COMMUNITY VISIT

A community visit provides a first-hand experience of the projects Wild Impact (formerly Africa Foundation), our long-standing community and conservation development partner, is facilitating and supporting to enable future leaders, healthy ecosystems, future foundations and thriving communities

### WELLNESS TREATMENTS OVERLOOKING THE PLAINS

After a safari-filled day, indulge in the pleasures of a Healing Earth wellness treatment at the Bateleur massage sala, the Kichwa massage tent or in the privacy of the guest room

### SUNDOWNERS ON THE EDGE OF THE ESCARPMENT

A guest favourite - in the company of Maasai warriors, enjoy a safari sundowner ritual at Impala Point, overlooking the vast expanse of the Masai Mara National Park

*Activities may incur an additional charge depending on which lodge you are staying at*



DISCOVER MASAI MARA  
Adventures of a Lifetime

# Seasonal highlights

## YEAR-ROUND ACTIVITIES

✓ Safari game drives	✓ Sundowners on the escarpment	✓ Maasai village visit
✓ Big Five sightings	✓ Picnic in the African bush	✓ Maasai blessing or celebrations
✓ Birdwatching	✓ Bush dining*	✓ Wild Impact community visit
✓ Bush walks*	✓ Healing Earth wellness treatment	
✓ Hot air balloon safari	✓ Maasai performance	

\*Weather dependent

## TIMING IS EVERYTHING

	JAN	FEB	MAR	APR	MAY	JUN	JUL	AUG	SEP	OCT	NOV	DEC
Big Five game viewing	✓	✓	✓	✓	✓	✓	✓	✓	✓	✓	✓	✓
Night drives to see nocturnal animals	✓	✓	✓	✓	✓	✓	✓	✓	✓	✓	✓	✓
Bush walks	✓	✓	✓	✗	✗	✓	✓	✓	✓	✓	✗	✓
To view the Great Migration crossing over the Mara River between the Masai Mara and Serengeti	✗	✗	✗	✗	✗	✗	✓	✓	✓	✓	✗	✗
Maasai boma visit	✓	✓	✓	✓	✓	✓	✓	✓	✓	✓	✓	✓
Hot air balloon safari	✓	✓	✓	✓	✓	✓	✓	✓	✓	✓	✓	✓
To enjoy a less crowded Masai Mara, with good rates in low season	✗	✗	✓	✓	✓	✗	✗	✗	✗	✗	✓	✓
SEASONAL RATES**	\$\$\$/\$\$	\$\$	\$\$	\$	\$	\$/\$\$\$	\$\$\$	\$\$\$	\$\$\$	\$\$\$	\$\$	\$\$/\$\$\$

\*\* The \$ / \$\$ / \$\$\$ references are used to indicate rate variation and are not associated with specific values



# A day in the life

## OF A GUEST

From the moment you wake up, your &Beyond experience is tailored to your interests and needs. Your butler and/or guide will discuss the day with you, including times and experiences, to ensure your day is as extraordinary as the location you are visiting. Here’s what to expect on a typical day on safari in the Masai Mara National Reserve.

### TIMING

### EXPERIENCE

Early morning	Early wake-up call with a hot cup of tea or coffee in your tent or at the main guest area/bar
Early morning to afternoon	<p>Depending on what you’d prefer and if the Great Migration is in season and in the area, there are a few game drive options available:</p> <ul style="list-style-type: none"><li>Go on an early-morning game drive with a tea and coffee stop, returning to the camp for breakfast and lunch. Enjoy the rest of your day at leisure, indulging in a wellness treatment or taking part in an optional lodge activity. Savour High Tea at the camp before heading out for an optional afternoon experience and/or game drive</li><li>Go on a morning game drive with either a tea and coffee stop or a pre-packed picnic bush breakfast, before returning to the camp for lunch. Enjoy the rest of your day at leisure, indulging in a wellness treatment or taking part in an optional lodge activity. Savour High Tea at the camp before heading out for an optional afternoon experience and/or game drive</li><li>When the Great Migration is in season and in the area, enjoy breakfast at the camp before heading out on a full-day game drive with a pre-packed picnic bush lunch. Return to the camp for dinner</li></ul> <p><i>Your guide will discuss your day with you the night before, confirming all available experiences beforehand. Please note, for added flexibility, a private vehicle must be booked in advanced at an additional cost</i></p>
Early morning to mid-morning (optional)	Be picked up from the camp for a balloon safari, following by a bush breakfast and shortened game drive on the way back to the camp
Optional activities	<p>Go on a local Maasai village visit or spend time with the Impact Team learning about the Nyakweri Forest and our other Wild Impact initiatives</p> <p><i>These experiences need to be selected as per your game drive schedule</i></p>
Evening	<p>Sip on your favourite pre-dinner drink of choice before enjoying dinner at the camp</p> <p><i>A Maasai dancing ceremony takes place every other night at the camp</i></p>
Late evening	Go on a pre-booked night game drive in search of the reserve’s nocturnal creatures

Timings and guest experiences are guidelines only.  
All experiences are subject to availability and weather dependent. Some experiences are at an additional cost.





## DISCOVER MASAI MARA

# Great Wildebeest Migration

## 1 ONE OF THE 7 NATURAL WONDERS OF THE WORLD

Considered the most thrilling spectacle in the animal kingdom, this epic journey migrates from Tanzania's Serengeti to Kenya's Masai Mara.

## 2 THE WORLD'S LARGEST OVERLAND MAMMAL MIGRATION

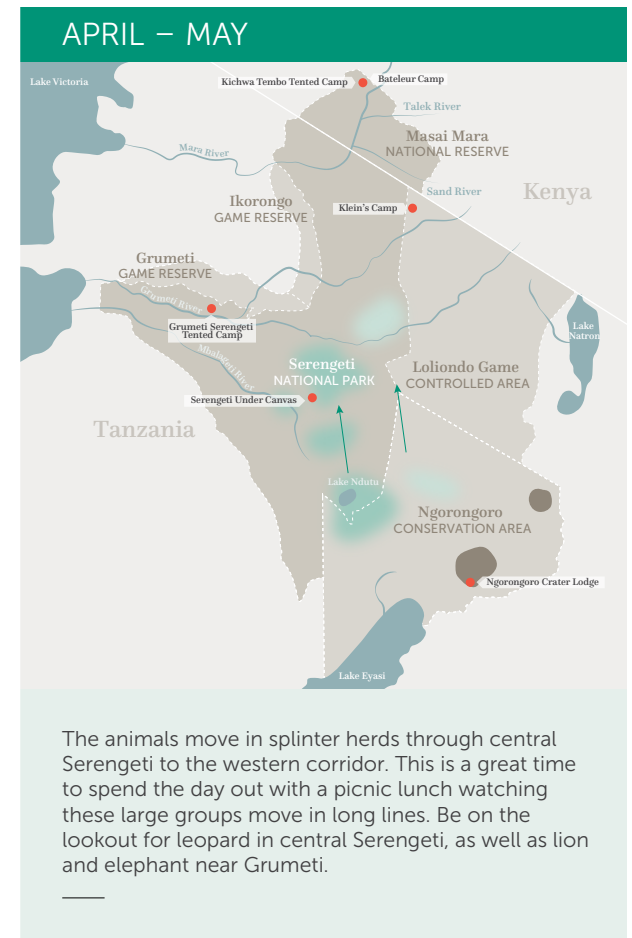
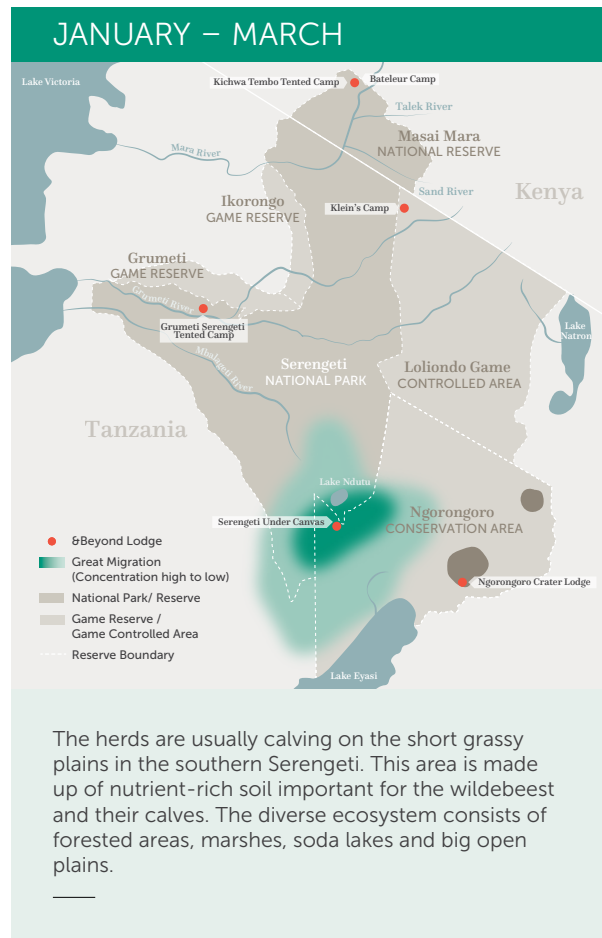
The annual movement of wildebeest and other herbivores across the Serengeti–Mara ecosystem consists of more than 1.5 million wildebeest, 500 000 zebra, 200 000 Thompson's gazelle and 18 000 eland.

## 3 THE ANIMALS MIGRATE OVER 800 KM (500 MI)

Due to the sheer size of the herd, the animals have to move to be able to survive. The herds generally follow the rain, as where there is rain, there is fresh grass. Once grass is depleted in one area, they will move on to a grassy area.

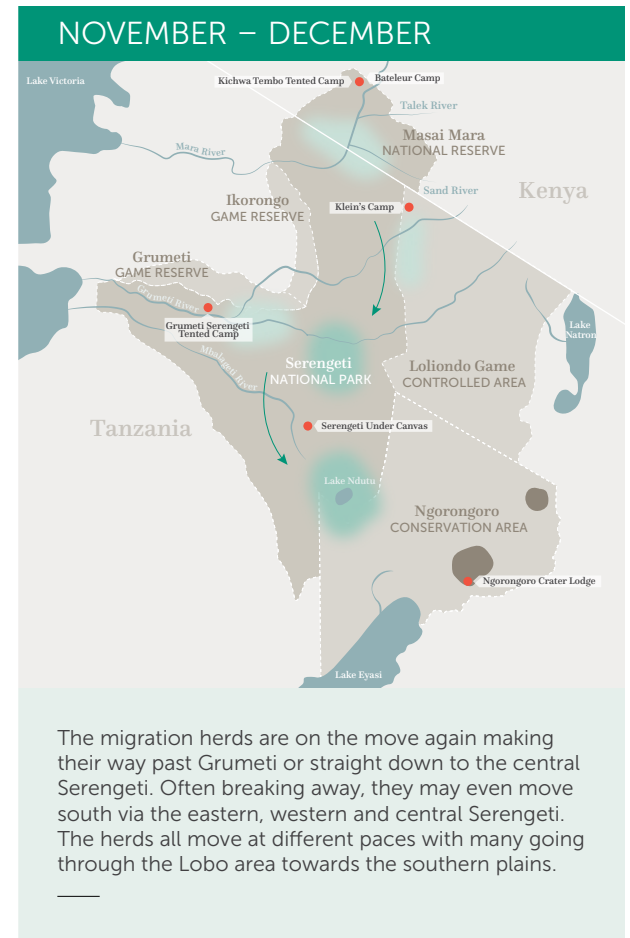
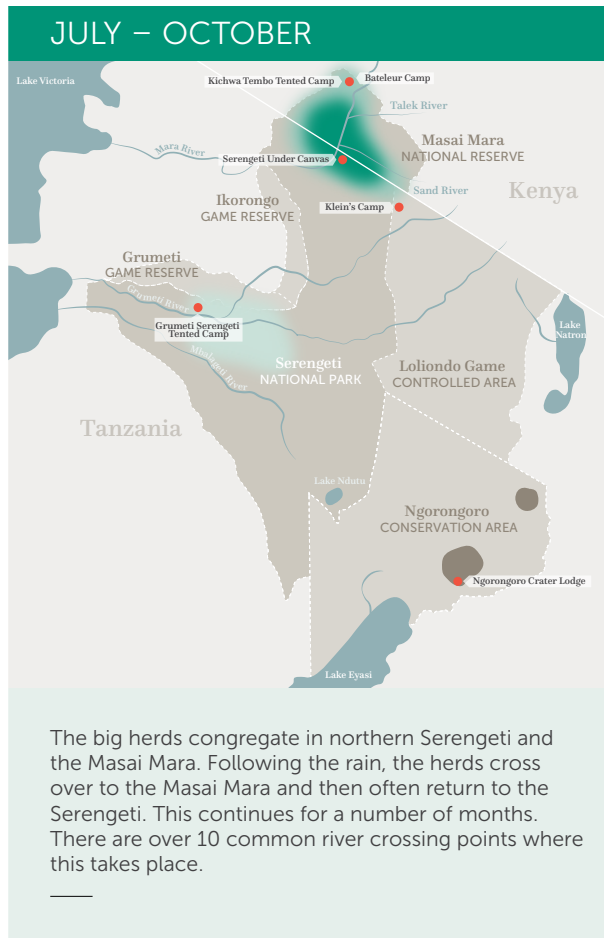
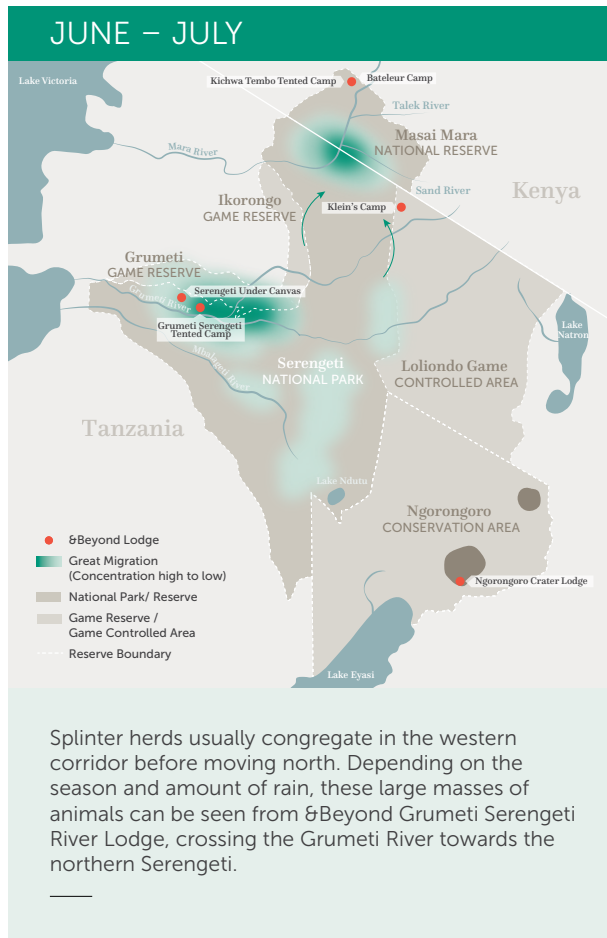
It's estimated 500 000 wildebeest calves are born annually.

The annual movement of wildebeest and other herbivores across the Serengeti-Mara ecosystem is rarely the same in terms of precise timing and direction.



(continues on next page)

# Great Wildebeest Migration (cont.)





Visiting East Africa and travelling across this vast landscape requires much thought and attention. Contact your preferred travel specialist to assist with your travel plans.

There are scheduled flights twice-daily on light aircraft from Nairobi's Wilson Airport to Kichwa Tembo's private airstrip

Mombasa Air operates daily flights (approximately two hours) from Mombasa to Nairobi

Flights connect from the Masai Mara to Entebbe via Kisumu

Flights connect from the Masai Mara to the Serengeti and Kigali via the Migori / Tarime border

The Masai Mara is accessible by road from Nairobi with 4x4 vehicle. Road transfer times dependant on traffic

✈️	35mins 3hrs 45mins	AMBOSELI						
🚗	1hr 30mins 6hrs	2hrs 35mins Not advised	SAMBURU NP					
✈️	35mins 3hrs 30mins	1hr 10mins Not advised	35mins 4hrs 30mins	LAIKIPIA				
🚗	55mins 5hrs	2hrs 55mins Not advised	30mins 3hrs 30mins	45mins 3hrs	MERU			
✈️	1hr 15mins 5hrs 30mins	3hrs 35mins Not advised	1hr 30mins Not advised	1hr 10mins Not advised	3hrs 5mins Not advised	MASAI MARA		
✈️	30mins 3hrs	3hrs 45mins 35mins	1hr 10mins 7hrs	40mins 3hrs 30mins	1hr 20mins 5hrs 30mins	3hrs 35mins 7hrs	RIFT VALLEY	
✈️	1hr 10mins Not advised	5hrs 30mins Not advised	5hrs Not advised	5hrs Not advised	5hrs 30mins Not advised	2hrs 35mins Not advised	5hrs Not advised	KENYAN COAST



## KENYA

- 1 Bateleur Camp
- 2 Kichwa Tembo Tented Camp
- 3 Suyian Lodge

## TANZANIA

- 4 Klein's Camp
- 5 Grumeti Serengeti River Lodge
- 6 Serengeti Under Canvas
- 7 Ngorongoro Crater Lodge
- 8 Lake Manyara Tree Lodge
- 9 Mnemba Island