



# LUNCH MENU

## LUNCH HOURS

11.30am - 3pm



### FEELING RAVENOUS?

### OR JUST A LIGHT NIBBLE?

#### Gourmet Burgers

<b>Botsoela Burger</b> (Chicken)	M150
	M150
<b>The Gem Burger</b> (Beef)	
<b>Malealea Monster Burger</b> (Beef & Bacon)	M165
The above burgers are served with Chips or Salad in a Sephaphatha (Traditional Basotho Bread)	

<b>Pitseng Burger</b>	
(Chicken or Beef without the carbs) - served with salad	M12
	0

#### Salads

Chicken	M90
Tuna Mayo	M90
Green Salad	M65
Side Salad	M50

#### Mains

<b>T-Bone Steak or Rump (300g)</b> with Chips or Salad	M210
<b>Lamb Chops</b> with Chips or Salad	M210
<b>Chicken Wings</b> with Chips or Salad	M150
<b>Fish with Chips or Salad</b>	M150
<b>Spaghetti Bolognese</b>	M150
Our house specialty, "World Famous" for the last 30 years	
Vegetarian Sauce option served with grated cheese	M90

<b>Packed Lunches</b>	M125
2 x Toasted Sandwiches	
Fruit	
Fruit juice or 500ml Still Water	

#### Sandwiches

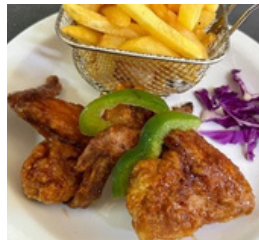
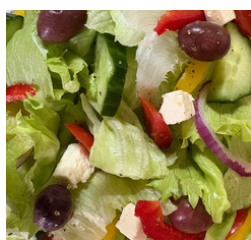
Toasted or not! Served on brown bread or sephaphatha (Traditional Basotho Bread)	
Cheese	M35
Cheese & Tomato	M45
Cheese, Tomato & Bacon	M65
Chicken Mayonnaise	M65
Tuna Mayonnaise	M65
Egg, Bacon & Tomato	M65
Bacon, Lettuce & Tomato	M65

#### Wraps

Chicken	M90
Tuna	M90

#### Sides

Chips - Large	M55
Chips - Small	M35
Sephaphatha (just on its own)	M20
Sephaphatha (with cheese & jam)	M30



#### DESSERT

Carrot Cake	M55
Apple Cake with Whipped Cream	M55
Chocolate Muffin with Whipped Cream	M35
Ice-Cream & Chocolate Sauce	M35

# Malealea Lodge

## BREAKFAST MENU

Arrange with Kitchen Ladies the night before if you would like an early or packed breakfast.

Book your packed lunches the night before.

Hot water for tea/coffee is available from 07h30

### Continental

M90

Filter, Espresso of instant Coffee/Tea & Juice

Fruit Salad with Muesli & Yoghurt

Toast & Muffin served with Butter & Jam

### Hot Breakfast

M110

Filter, Espresso of instant Coffee/Tea & Juice

Toast & Muffin served with Butter & Jam Fried or

Scrambled Eggs with bacon and tomato OR

Omelet with any two toppings:

(cheese/tomato/onion/bacon)

### FUKUFUKU (FULL) BREAKFAST

M160

Named after the highest peak in the Malealea Valley (2,361m), this breakfast will fuel you with enough energy to conquer Mt. Fukufuku!

Filter, Espresso of instant Coffee/Tea & Juice

Fruit Salad, Muesli & Yoghurt Toast & Muffin

served with Butter & Jam Fried or Scrambled

Eggs with bacon and tomato OR Omelet with any

two toppings: (cheese/tomato/onion/bacon)