



MAWIMBI

BUSH CAMP



RACK RATES 2025 & 2026

MAWIMBI Bush Camp

An exclusive safari escape in the heart of Zambia's Kafue National Park between the great Kafue River and a natural wetland. With access to 22,400 square km of pristine wilderness, home to over 150 mammal, 500 bird, 100 reptile and aquatic species, MAWIMBI offers an authentic and immersive safari experience for discerning travellers to switch off from their busy lives and reconnect in nature. MAWIMBI is an experience you will never forget.

Opening Special GREEN SEASON 15th Nov - 30th April

2025

2026

INTERNATIONAL RACK RATE

US\$ 464 ppn II US\$ 870 ppn

CHILDREN SHARING (14-17yrs)

US\$ 406 ppn II US\$ 754 ppn

SADC / ZAMBIAN RESIDENTS - Less 20%

ZAMBIAN CITIZENS - Less 30%

25% Single Supplement applies



** MINIMUM 2 NIGHT STAY **

NON COMMISSIONABLE

- Zambian VAT @ 16% INCLUDED
- Zambian Tourism Levy 1,5% NOT incl.
- Zambian Service Fee 10% NOT incl.
- Additional Fees & Levies apply below

Opening Special HIGH SEASON 1st May - 14th Nov

2025

2026

INTERNATIONAL RATE

US\$ 696 ppn II US\$ 1,276 ppn

CHILDREN SHARING (14-17yrs)

US\$ 464 ppn II US\$ 1102 ppn

SADC / ZAMBIAN RESIDENTS - Less 20%

ZAMBIAN CITIZENS - Less 30%

25% Single Supplement applies

KAFUE NATIONAL PARK FEES

| GUEST | PARK FEE | BED LEVY | BOATING FEE |
|------------------|----------|----------|-------------|
| International | \$20.00 | \$30.00 | \$20.00 |
| SADC/Residents | \$ 15.00 | \$20.00 | \$ 3.00 |
| Zambian Citizens | \$ 2.00 | \$ 15.00 | \$ 3.00 |

Per Person Per Night | No VAT
Boating levy only for river trips taken

Per Person Per Night | Incl. VAT
Supporting local upliftment projects

COMMUNITY LEVY

| | |
|------------------|----------|
| International | \$34.80 |
| SADC/Residents | \$ 23.20 |
| Zambian Citizens | \$ 11.60 |

EXCLUSIVE CAMP USE

10% Discount
4 night minimum

GUIDE ACCOMMODATION

40% Discount on Accommodation
Management Tent (subject to availability)
Meals & 2 Activities included.
Alcohol not included. All fees & levies apply.



All inclusive meals, game drive snacks, house wines
local beers & selected spirits, Soft drinks, water etc.



Two activities per day - game drives, river trips (fee)
walking safaris & wetland bird hide.



TERMS AND CONDITIONS



CANCELLATION POLICY

PROVISIONAL BOOKINGS

Auto expire after 14 days

25% DEPOSIT FULL RESERVATION

Due on written reservation confirmation

75% RESERVATION BALANCE

Due 45 days prior to arrival

CANCELLATION

Confirmed to 46 days: 25% deposit retained

45 - 31 days: 75% of reservation retained

30 - 0 days: 100% of reservation retained

CHILD POLICY

- Children age 14-17 (sharing parent's tent) or Adult rate charged.
- Minimum age 14 yrs - participate in all activities we offer.
- Exclusive camp use - lower child age by special arrangement.
- 18+ years for the Starlit Sleep-out experience.

RACK RATES DO NOT INCLUDE

- Flights, Airport Departure Taxes / Access Fees / Visa fees.
- Air or Road Transfers * see below Chunga Game Drive.
- Kafue National Park Fee, Bed Levy (pppn) & Boating Fee - for river trips taken (no VAT).
- Community Upliftment Levy (includes VAT).
- 25% Single Supplement (all seasons).
- Zambian Hospitality Service Fee 10% (subject to change)
- Zambian Tourism Levy 1,5% on accommodation (subject to change).
- Personal items, expenses and curios.
- Premium imported spirits, champagne and à la carte wines.
- Gratuities.



RESERVATION INFORMATION REQUIRED

- Arrival & departure information.
- Guest full names, ages and nationality and tented suite partner.
- Dietary requirements, allergies and any special requests.
- Travel Insurance Policy and emergency next of kin details required.
- An indemnity form and disclaimer to be signed on reservation.
- Copy of passport/travel document will be taken.

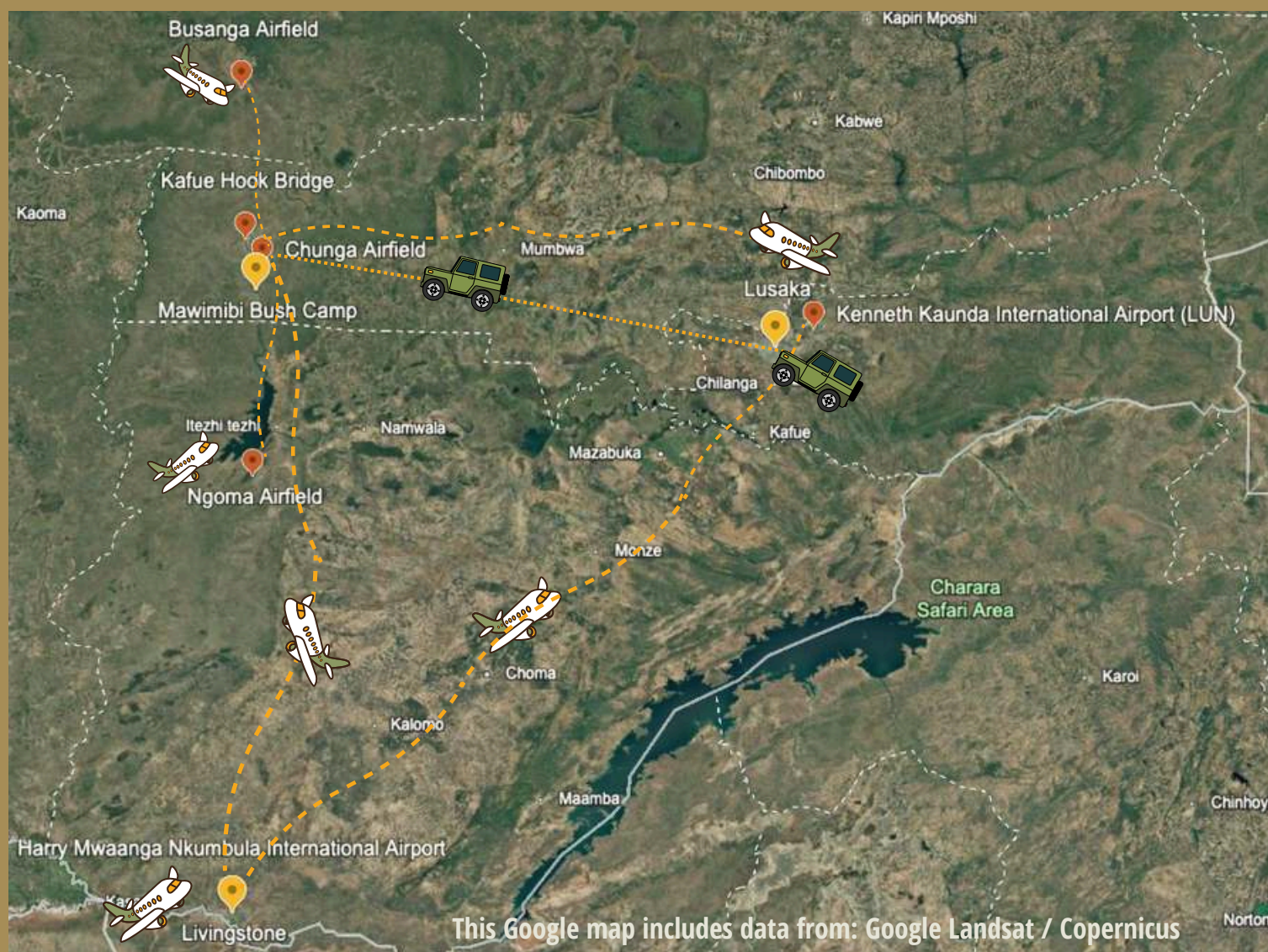


LOCATION & ACCESS

MAWIMBI is located in the central area of Kafue National Park.

GPS Location: Latitude 15.16554 S | Longitude 25.96045 E

What 3 words: w3w.co/enough.enrich.held



DIRECT FLIGHTS TO LUSAKA

Scheduled Flights - 20 Airports from 12 different countries

- Currently 15 airlines fly to Lusaka (LUN) from international and local hubs. Airlines include Proflight Zambia, SAA and Airlink from South Africa, Emirates from Dubai, Qatar from Doha.
- Charter flights are available from Lusaka and Livingstone, as well as other small airfields subject to availability - cost varies on number of people and type of aircraft.
- It's a complimentary 45 minute Game Drive from Chunga Airstrip to MAWIMBI Bush Camp when flying in.



BY ROAD

- A tar road connects Lusaka to Kafue National Park (Mumbwa Main Road) until the park entrance.
- MAWIMBI Bush Camp road transfer from Lusaka (5hrs). Subject to availability & additional fees per person apply.

MAWIMBI BUSH CAMP

TENTED SUITES

FOUR SAFARI TENTS OVERLOOKING THE KAFUE RIVER



4 private suites (sleeping 8)
Kafue River frontage
Extra length King or 2 twin beds



En suite bathroom (shower)
Separate toilet
Outside shower
Hot water on tap



Private deck
Plunge pool / hot tub



Starlink WiFi



Mosquito net
Overhead fan
Flask | coffee | tea | hot choc

STARLIT Sleep out (2026)

- FREE with 4 night+ bookings
- Can be booked with separate supplement
- Closed in Green Season
- 18+ yrs



THE
SALT
ROAD.



BUSH DINING

ALL INCLUSIVE MEALS + DRINKS

MAWIMBI chefs are trained by the famous SALT Road chefs. Cooking on an open fire, or in the fully-equipped kitchen, you'll be able to observe their creative flair, as they prepare sumptuous meals from local and ethically sourced produce.



Walking Safaris



River Trips



Game Drives

MAWIMBI ACTIVITIES

Two activities per day included. Extra activities can be added (subject to availability) for a tailor-made and unforgettable holiday.



MAWIMBI is more than a safari..
it's a return to the authentic soul of Africa.

mawimbibushcamp.com
Biz WhatsApp +44(0)77 752 22400
res@mawimbibushcamp.com