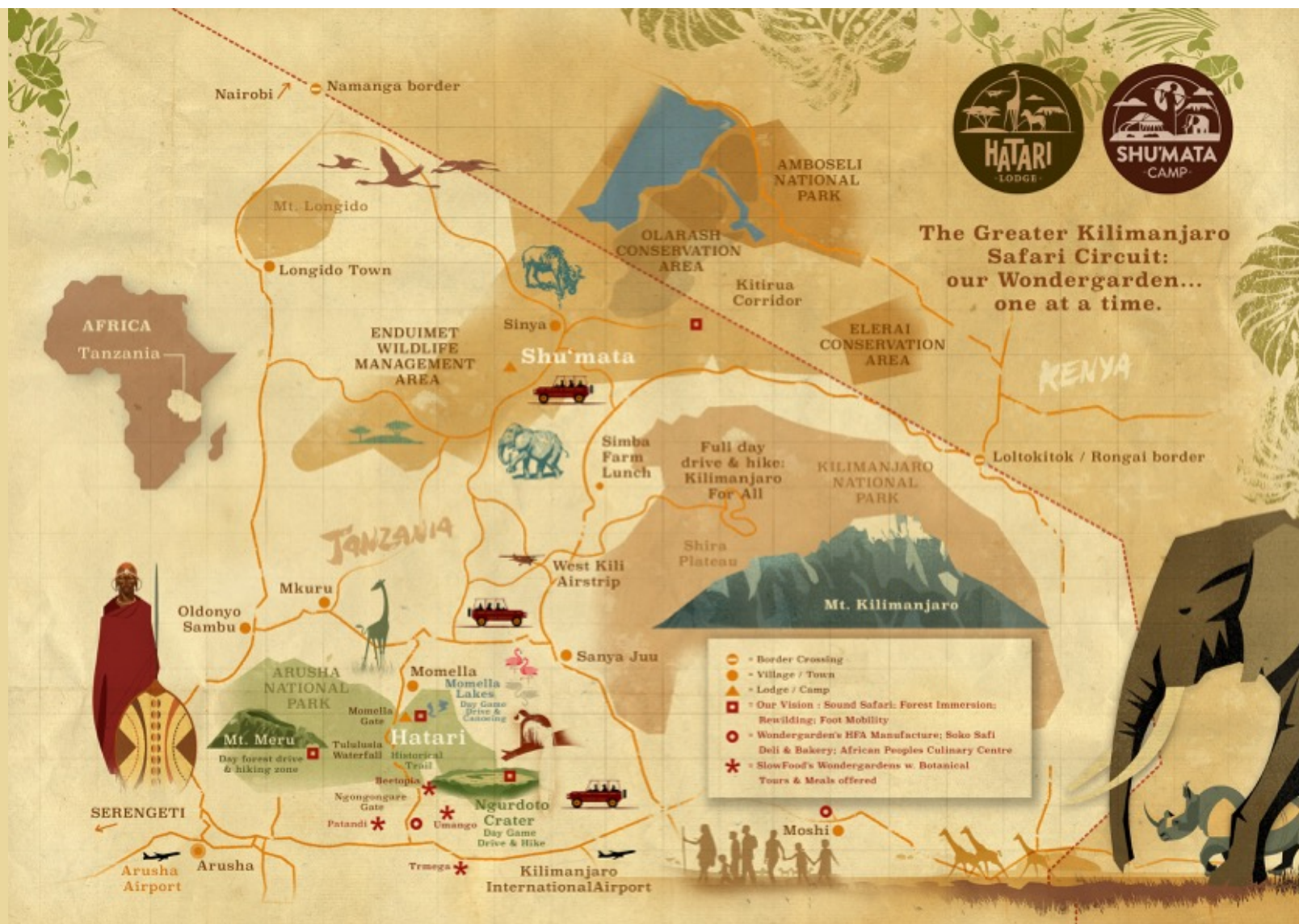




# KILIMAJARO SAFARI CIRCUIT

Connecting Hatari Lodge, Arusha National Park, Shu'Mara Enduiment Wildlife Manage Area and Wondergarden Ltd.  
Between two mountains, Mount Kilimanjaro and Mount Meru.







## HATARI LODGE

Hatari: nestled in Mt. Meru's woodlands,  
in Arusha National Park.

Famous for 1963 film "Hatari," starring John Wayne.

Gabriel family fosters Hatari's legacy with community and nature  
harmony.



## RACK RATES | 2025 - 2027 | 1 MAY 2025 - 30 APRIL 2027

Single Supplement is 50% of the per person sharing rate.

Single Supplement is applicable to every person (also children) in a single room, on top of the per person sharing rate.

### DELUXE ROOMS

9 Available. Sleeps 2 adults & 1 child sharing (no children under the age of 8 in the Deluxe Rooms. Children under 8 years must stay in a Suite/Junior Suite, sharing with parents)

Rack Rates   2025 - 2027	01 May 2025 - 30 April 2027
Rate Type	Per Person Per Night
Half Board	\$ 340.00
Full Board	\$ 372.00
Half Day Game Package	\$ 462.00
Full Day Game Package	\$ 542.00

### JUNIOR SUITES

3 Available. Sleeps 2 adults & 1 child sharing.

Rate Type	Per Person Per Night
Half Board	\$ 400.00
Full Board	\$ 432.00
Half Day Game Package	\$ 522.00
Full Day Game Package	\$ 602.00

### SUITES

3 Available. Sleeps 2 adults & 1 child sharing.

Rate Type	Per Person Per Night
Half Board	\$ 530.00
Full Board	\$ 562.00
Half Day Game Package	\$ 652.00
Full Day Game Package	\$ 732.00

### VILLA

3 Available. Sleeps 4 adults & 2 children sharing.

Villa Rate at Hatari Lodge - Unit rate based on a maximum of 6 guests. A Villa consists of a Junior Suite and Suite with an inter-leading door.

Rate Type	Per Unit Per Night
Full Board	\$ 1 990.00

## ACTIVITIES

### MOMELLA LAKES TOUR

Half-day tour of Arusha National Park's seven volcanic lakes and their resident Ramboynance of pink flamingos. Weather permitting either in the morning or afternoon. Guide included.

### TULULUSIA WATERFALL WALK

Half-day walking safari from the lodge and back with a ranger on Mt Meru's slopes to view Colobus monkeys, buffaloes and giraffes on the way to the gorge of Tululusia Waterfall. Ranger and Scout included.

### CANOEING ON THE SMALL MOMELLA LAKES

Half-day canoeing on one of the small Momella Lakes. Weather permitting either in the morning or afternoon. Guide included.

### MOMELLA VILLAGE WALK

Half-day walking activity from the lodge to the Momella Village to experience their culture. Scout included.

### NGURDOTO CRATER TOUR

Half-day traversing this jewel in the jungle from Ngurdoto forest to the central meadows and swamps. This activity is seasonal. Guide included. This is a drive. Walk not included in this activity

### HISTORICAL TOUR & WALK

Half-day following the tracks of Margaret Trappe. Walk from the one-exit grave and hunting area of Veterinary doc Nagi through the deep forest to the second grave of Margaret Trappe, the first white woman hunter and elephant whopener. It's a historical forest walk. Guide and Ranger included. Guests needs to be fit as it is a long walk.

### MOUNT MERU TOUR

Full-day drive to the hidden Mt. Meru crater at 2 500m elevation, hiking inside the fog forest-covered amphitheater of the world's largest volcanic walls. Picnic at the waterfalls on your way down. Guide, Ranger and picnic included.

### TULUSIA WATERFALL AND FIGTREE EXPERIENCE

Full-day walk to Tulusia waterfall with a drive to Figtree and a picnic at the waterfall. This is a great alternative to the Mount Meru Tour as the walk to Tulusia waterfall is less strenuous. Guide, Ranger and picnic included.

### NGURDOTO CRATER TOUR & HIKE

Full day traversing this jewel in the jungle from Ngurdoto forest to the central meadows and swamps with a rewarding picnic on the rim when coming back up again. Guide, Ranger and picnic included.

### ARUSHA NATIONAL PARK GAME DRIVE

Full-day spent in the Arusha National park with an all-day game viewing/adventure sightseeing in Meru forestland, the little Serengeti, hidden Ngongongare Springs and the Boma la Miji viewpoint. Guide and picnic included.

### KILIMANJARO FOR ALL - A HIKE ON SHIRA PLATEAU

Full-day drive onto Kilimanjaro's Shira Plateau at 3 500m elevation and experience of the alpine mountain landscape on foot with lunch afterwards at Simba Farm. Guides included.

### KILI FOR ALL - SUPPLEMENT FULL DAY GAME PACKAGE RATE

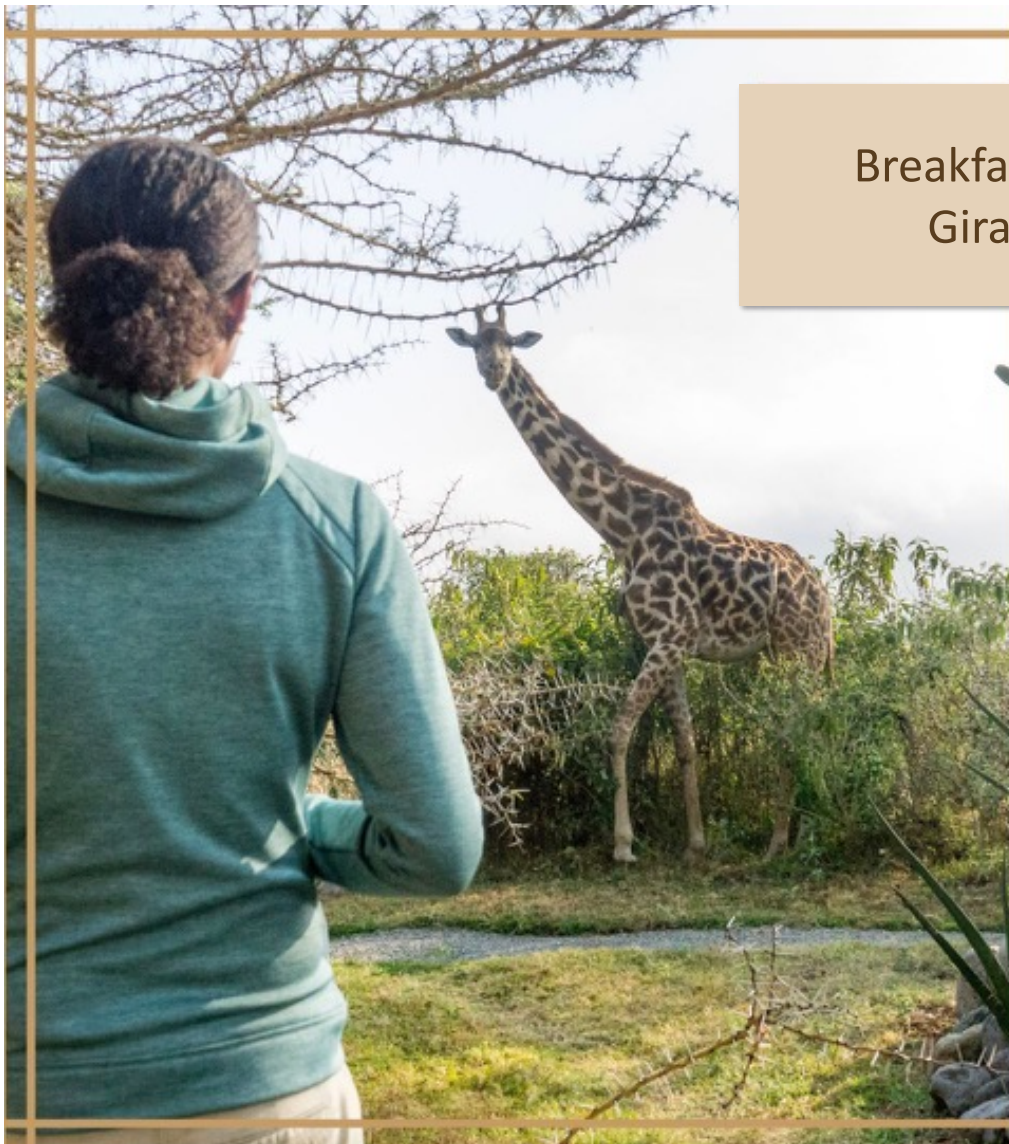
Full-day drive onto Kilimanjaro's Shira Plateau at 3 500m elevation and experience of the alpine mountain landscape on foot with lunch afterwards at Simba Farm. Guides included.

### ARUSHA CITY TOUR

Full-day tour to Arusha. It is a bustling, multi-cultural city that blends colonial heritage with modern Africa. Guide included. Extra charge for lunch.



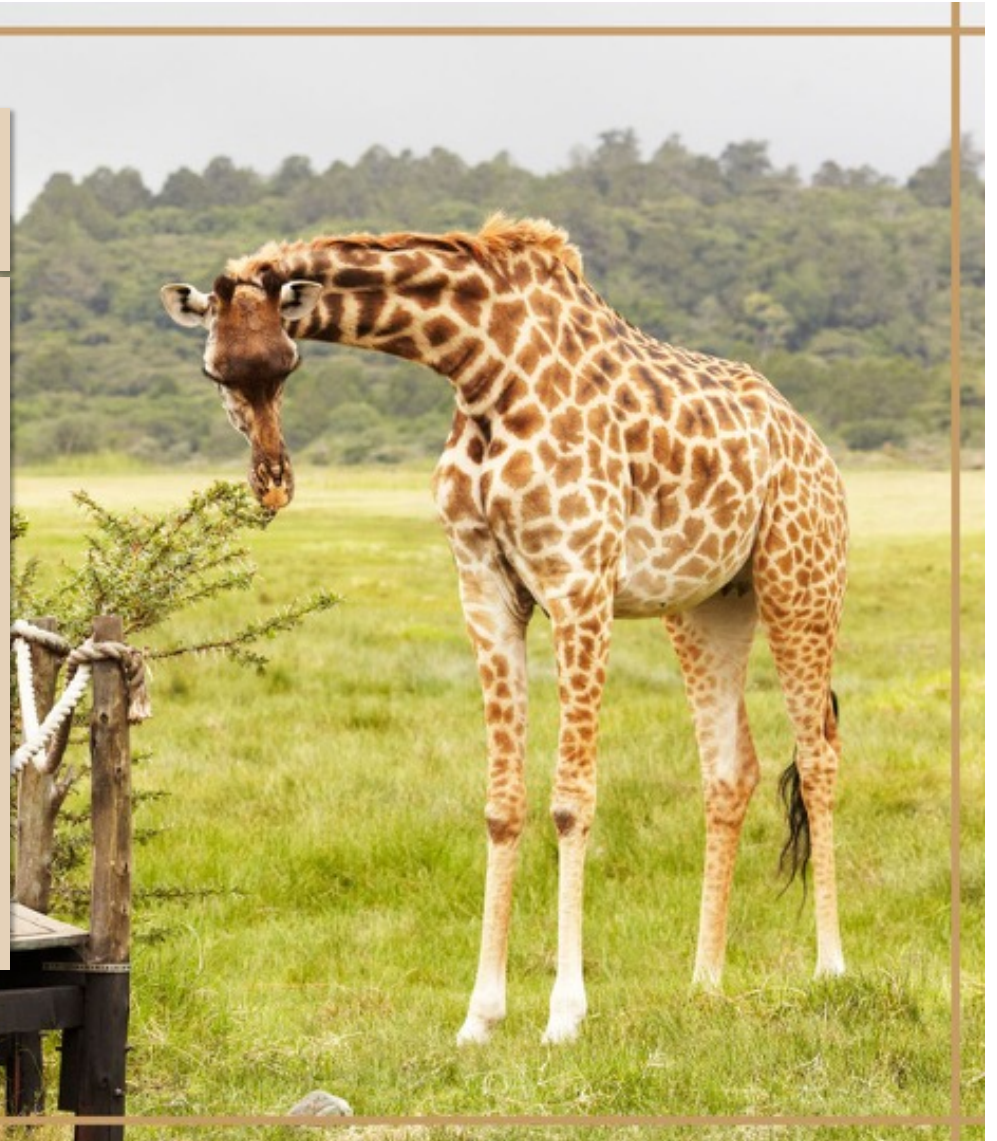
Breakfast with  
Giraffes





## FACILITIES

- Restaurant - 4-courses, all native foods reintroduced in the menu with Wondergarden Ltd.
- Bar/Lounge
- Calming walkway - no "boundary" to nature boasting wildlife sightings
- Laundry Service
- Secure Parking
- Eco Friendly
- Complimentary Internet Access
- Child friendly
- Fair Trade Tourism Certified





# FOOD CONCEPT

90% native, local foods  
Grown without chemicals  
Little to no imports  
Meat contains no hormones  
Meat is grass fed  
Supporting the local farmers







FOLLOW ME...

Into rooms with personalities:  
Some exotic and wild with colour, other refined and filled with light





8x Deluxe Rooms  
4x Junior Suites  
3x Suites















A photograph of a safari vehicle, possibly a Land Rover, driving away on a dirt road through a dense, lush forest. Sunlight filters through the trees, creating a dappled light effect on the ground and foliage. The vehicle is in the center-left of the frame, heading into the distance.

## MOUNT MERU TOUR

Signature Experience

Full-day Drive to the hidden Mt. Meru Crater at 2 500m elevation. Hiking inside the fog forest-covered amphitheatre of the world's largest volcanic walls Picnic at the waterfalls on your way down. Guide, Ranger and picnic included







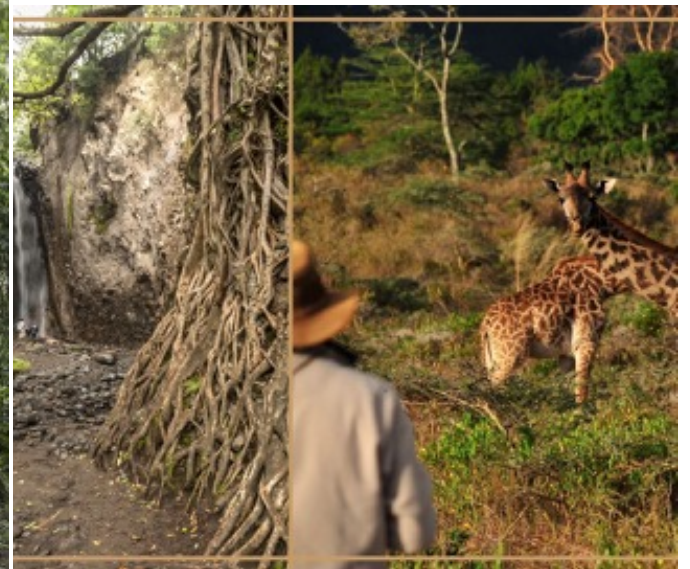




## NGURDOTO CRATER TOUR & WALK

Full day traversing this jewel in the jungle from Ngurdoto Forest to the central meadows and swamps with a rewarding picnic on the rim when coming back up again. Guide, Ranger and picnic included.









WONDERGARDEN





## 3 NIGHT HATARI LODGE ITINERARY

### Day 1

Transfer from JRO or Arusha airport to Hatari Lodge (Transfer done by Hatari)

Walk to Tululusia Waterfall

Back to the lodge for sundowners and dinner

### Day 2

Mount Meru Tour and Lunch at the waterfall

Back to the lodge for Sundowners and dinner

### Day 3

Ngurdoto Crater Tour (or hike) or Arusha National Park

Day 4: Depart the lodge via Wondergardens for breakfast



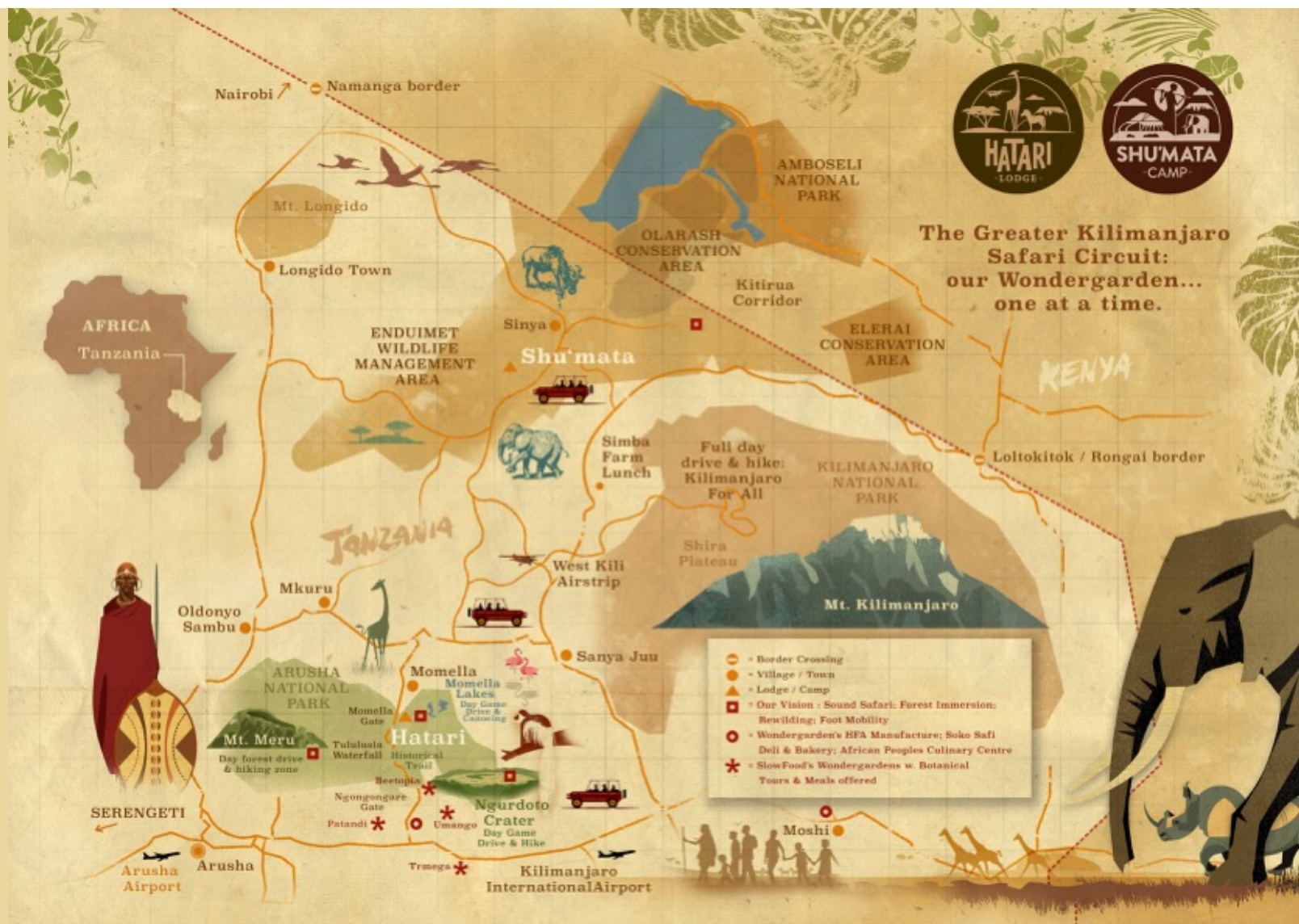


## SHU'MATA CAMP

Situated directly under the majestic Mount Kilimanjaro, in the hidden gem of the Enduimet Wildlife Management Area.

Located adjacent to the UNESCO site Mt. Kilimanjaro National Park, to the south-east and its famed crater highlands, there are unlimited ways to enjoy this area along with the magnificent Great Rift Valley. The Kenyan-Tanzania border sits to the north of the Enduimet Wildlife Management Area.







## RACK RATES | 2025 - 2027 | 1 MAY 2025 - 30 APRIL 2027

### LUXURY TENTS

Perfectly positioned to encompass the unique views across the wilderness and Mt. Kilimanjaro. Each of the seven tents is self contained with a full bath and private veranda. A traditional safari camp, the interiors and décor have all been designed as a tribute to the bygone era and are chic and colorful.

Single Supplement is 50% of the per person sharing rate.

Single Supplement is applicable to every person (also children) in a single room, on top of the per person sharing rate.

7 Available. Sleeps 2 adults & 2 children sharing.

Rack Rates   2025 - 2027	01 May 2025 - 30 April 2027
Rate Type	Per Person Per Night
Half Board	\$ 512.30
Full Board	\$ 544.30
Half Day Game Package	\$ 634.30
Full Day Game Package	\$ 714.30

Book all 7 tents and pay for 12 guests but have a maximum of 14 guests stay.

#### HALF BOARD

Includes: Accommodation with Dinner and Breakfast. VAT, Tourism Development Levy, Concession Fees

Excludes: Wildlife Management Fees (WMA), Conservation Fees, Activities, Transfers, lunch, beverages as well as anything not mentioned in the inclusions

#### FULL BOARD

Includes: Accommodation with Dinner, Breakfast and Lunch. VAT, Tourism Development Levy, Concession Fees

Excludes: Wildlife Management Fees (WMA), Conservation Fees, Activities, Transfers, beverages as well as anything not mentioned in the inclusions

#### HALF DAY GAME PACKAGE

Includes: Accommodation with Dinner, Breakfast and Lunch, one Half Day Activity. VAT, Tourism Development Levy, Concession Fees

Excludes: Wildlife Management Fees (WMA), Conservation Fees, Transfers, beverages as well as anything not mentioned in the inclusions

#### FULL DAY GAME PACKAGE

Includes: Accommodation with Dinner, Breakfast and Lunch, one Full Day Activity. VAT, Tourism Development Levy, Concession Fees

Excludes: Wildlife Management Fees (WMA), Conservation Fees, Transfers, beverages as well as anything not mentioned in the inclusions

#### KILIMANJARO-AMBOSELI ECOSYSTEM MORNING GAME DRIVE

Half-day early morning game-drive through acacia forest and seasonal swamps to the elephant retreats on the lower slopes of Kilimanjaro while also enjoying a bush breakfast. Guide included.

#### KILIMANJARO-AMBOSELI ECOSYSTEM AFTERNOON GAME DRIVE

Half-day late afternoon game-drive through acacia forest and seasonal swamps to the elephant retreats on the lower slopes of Kilimanjaro. Ending off the day with sundowners. Guide and one drink per person included.

#### GREATER KILIMANJARO-AMBOSELI ECOSYSTEM GAME DRIVE

A full-day game-drive through acacia forests, salt pans, old meerscham mines, now bird sanctuaries and seasonal swamps to the elephant retreats on the lower slopes of Kilimanjaro. Climb granite rock boulders and enjoy your picnic and endless views. Guide and picnic included.

#### GUIDED WALK IN THE FOOTSTEPS OF ELEPHANTS | SUPPLEMENT

Enhance your Kilimanjaro-Amboseli Ecosystem morning or evening Game Drive with a guided walk accompanied by an armed Ranger to find Africa's most majestic animals. Ranger included.

#### MAASAI NATURALIST WALK

2 - 3 hour walk with a knowledgeable Maasai guide through the arid Maasai Steppe around Shu'mata Camp hill to learn centuries-old survival methods. Includes a sundowner on the hill.

#### SUNDOWN SPEAR THROW

Late afternoon to evening activity that includes a spear-throwing exercise, sundown drinks and dusk-drive back to the camp. This activity combines with our Afternoon Game Drive

#### KILIMANJARO FOR ALL - A HIKE ON SHIRA PLATEAU

Full-day drive onto Kilimanjaro's Shira Plateau at 3 500m elevation and experience of the alpine mountain landscape on foot with lunch afterwards at Simba Farm. Guides included.

#### KILI FOR ALL - SUPPLEMENT FULL DAY GAME PACKAGE RATE

Full-day drive onto Kilimanjaro's Shira Plateau at 3 500m elevation and experience of the alpine mountain landscape on foot with lunch afterwards at Simba Farm. Guides included.











The image shows the interior of a traditional Moroccan room. The walls are decorated with a red and white geometric pattern. In the center, there is a large, ornate wooden lantern holder with three lit lanterns. To the right, two more lanterns hang from the wall. The floor is made of light-colored stone or tile. A red cushion and a white patterned cloth are visible on the right side. The overall atmosphere is warm and traditional.

## FACILITIES

- Communal Dining - Fresh Locally Sourced Ingredients/products
- Bar
- Battery Charging facilities
- Secure Parking
- Eco Friendly
- Private Vehicle available







A photograph of a tented lounge area. In the foreground, there is a wooden chair with a patterned cushion and a small wooden table holding a thermos and some cups. To the right, there is a wooden stand with a bag hanging on it. The tent has a wooden frame and a light-colored canopy. The background shows a vast savanna landscape with trees and hills under a cloudy sky.

FOLLOW ME...

Into tented Spaces, adorned with Luxury and wonder, filled with sunlight by day and moonlight by night



## 7x Luxury Tents





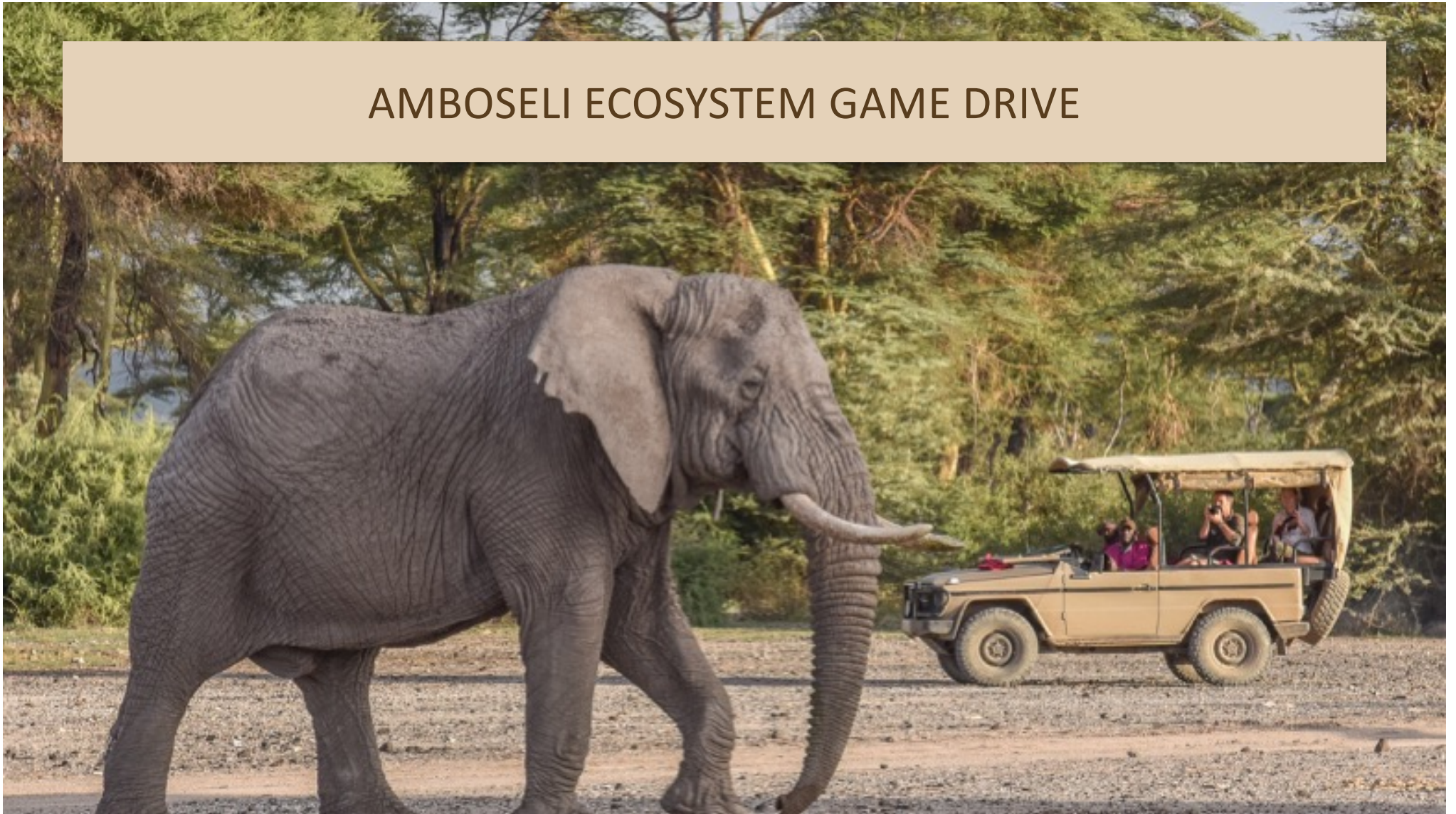








## AMBOSELI ECOSYSTEM GAME DRIVE













# KILI FOR ALL





## KILI FOR ALL – SHIRA PLATEAU











## 3 Night Itinerary at Shu'Mata Camp

Day 1:  
Transfer from JRO to Shumata (transfer done by Shumata)  
Kili for All

Day 2:  
Amboseli with bush breakfast

Day 3:  
Game viewing activity into the Loliondo area

Day 4:  
Breakfast and Departure