



**MAWIMBI**  
BUSH CAMP

# MAWIMBI

KAFUE NATIONAL PARK, ZAMBIA

OPENING SPECIALS 2025

# LOCATION & ACCESS



## BY AIR

From Lusaka or Livingstone International Airports to Chunga Airfield in central Kafue National Park: 50-70 minutes flight time.

Charter flights are available through many private operators.

Charter flights operate from other small airfields like Busanga and Ngoma to Chunga within Kafue National Park.

MAWIMBI offers a free 45 minute Game Drive transfer from Chunga Airfield to the camp.

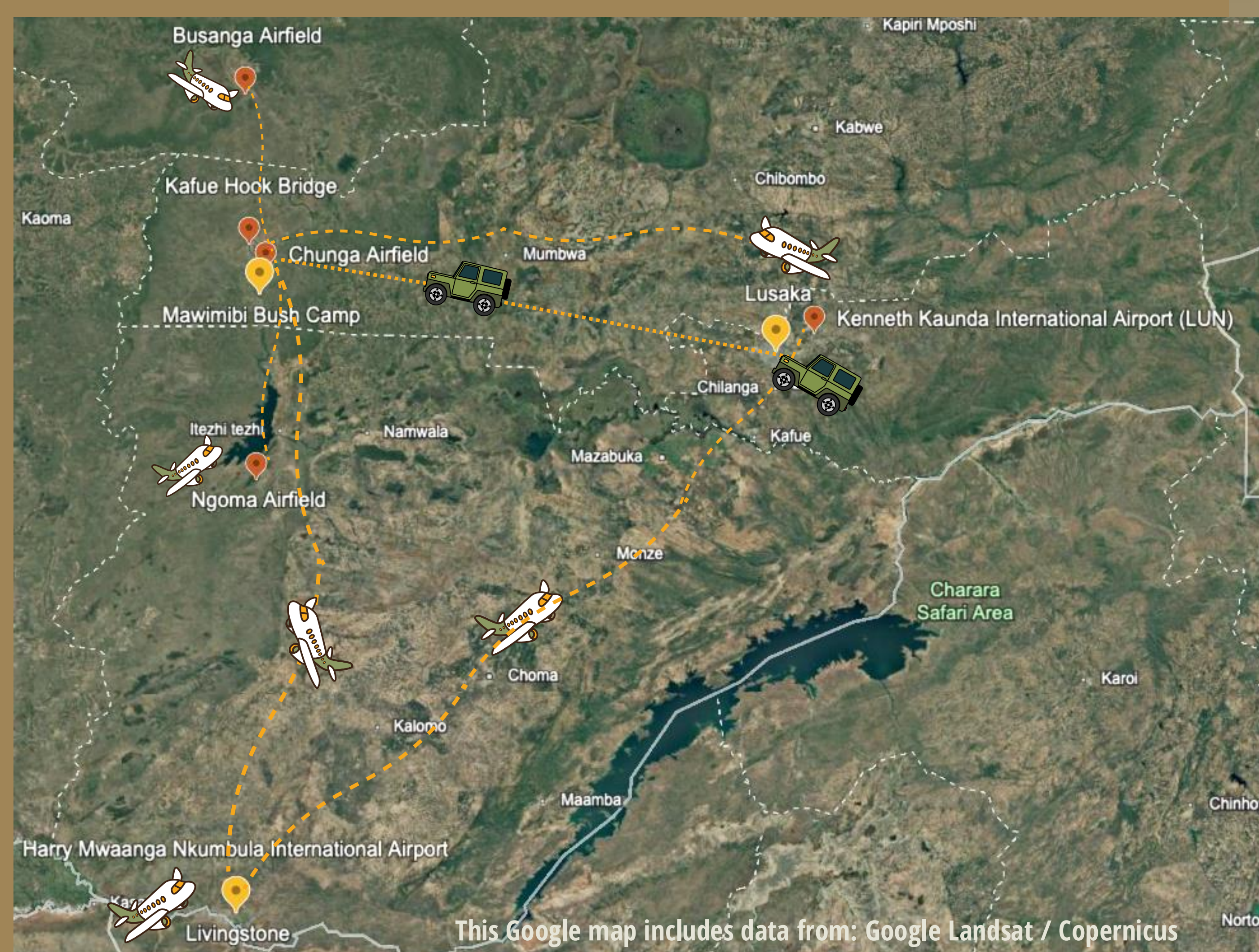


## BY ROAD

Lusaka to MAWIMBI - 5 hrs by car (tar road majority of the way)

Recommended departure time from Lusaka is no later than noon.

Self drive from Livingstone takes 7-8 hours.





MAWIMBI MAIN CAMP LAPA

| Reception | Library | Lounge | Bar | Dining | Game viewing corner |



# CAMP LAPA

Set in a prime location between the great Kafue River and thriving wetland (dambo), MAWIMBI camp offers exceptional wildlife sightings. Bird lovers can spend many peaceful hours at the wetland Bird Hide.



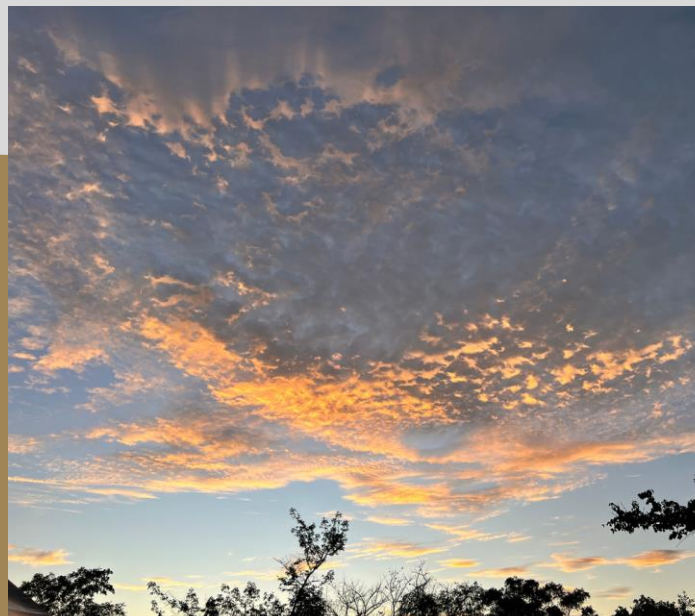
## FACILITIES

- Exclusive Main Camp
- Reception and relaxing lounge
- Library
- Dining area
- All inclusive meals
- Game viewing corner
- Fully stocked bar
- Coffee / tea / water
- Ablutions nearby
- Starlink WiFi



# TENTED SUITES

Sleep in unparalleled comfort in one of four beautifully designed tents. Each private suite has a stunning view overlooking the Kafue River - a magical evening retreat after an adventurous day in the bush.





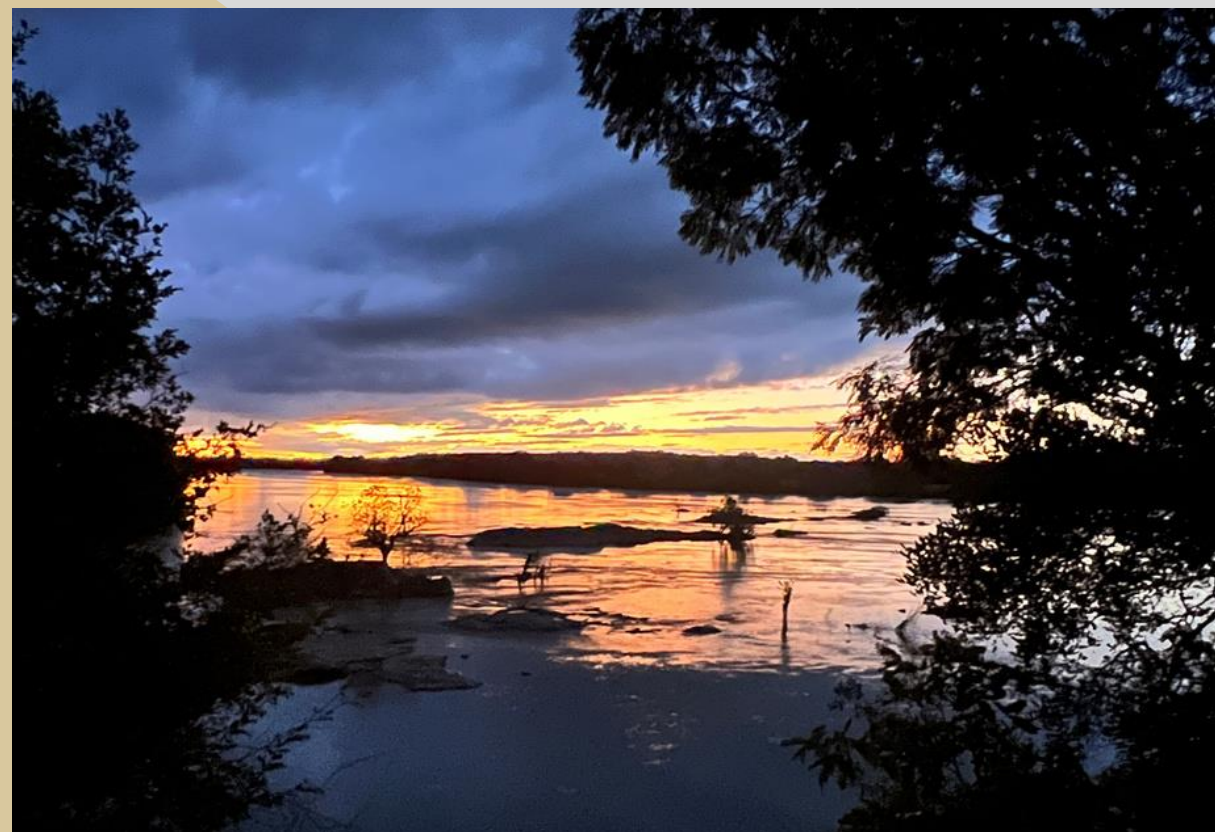
# SAFARI STYLE

Awaken to the morning chorus and watch Pied Kingfishers diving for their breakfast, hippos wading, and crocs sunning themselves on the rocks, as you sip your hot morning coffee.



## AMENITIES

- 4 private tented suites (2 people each)
- Extra length King or 2 twin beds
- En suite bathroom (inside shower) and separate loo
- Outside shower
- Hot water on tap
- Private deck
- Plunge pool / hot tub
- Mosquito net
- Overhead fan
- Flask & Coffee / Tea / Hot Choc





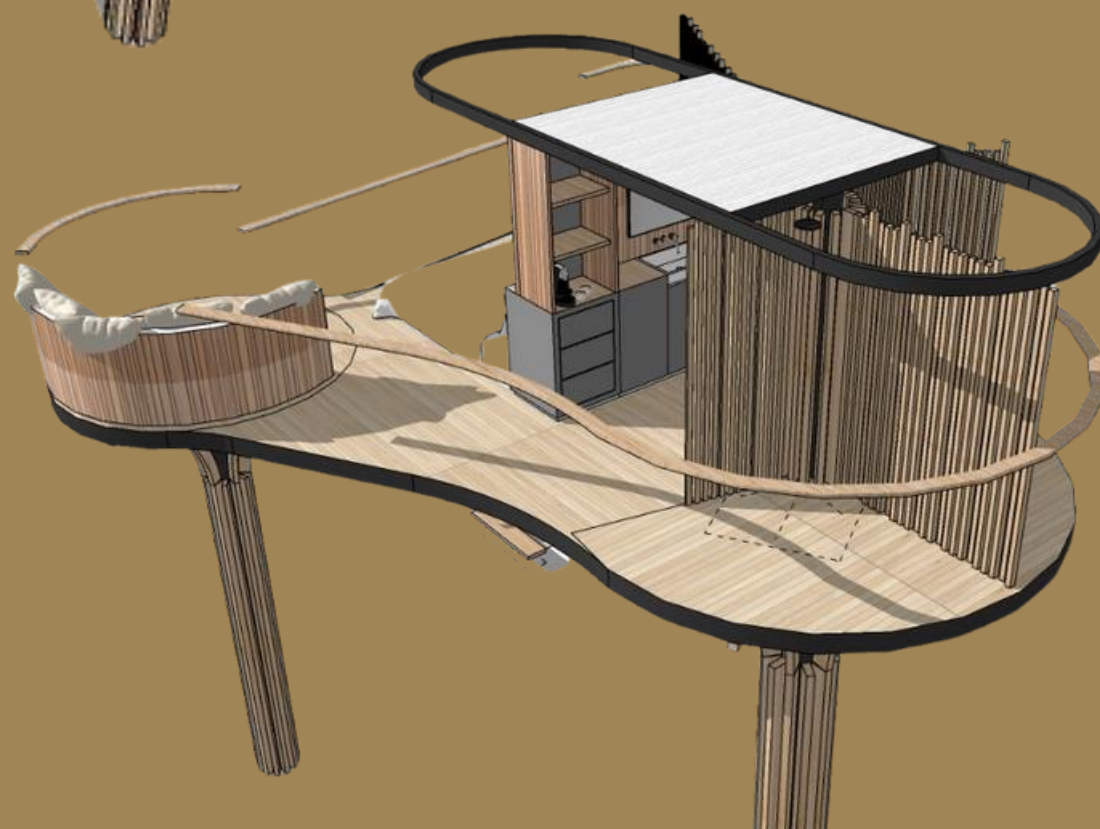
# STARLIT SLEEP OUT

Guests are guided by an armed scout on a sunset Walking Safari to a secret wilderness location, where they spend the night under the stars – safe, secluded, and surrounded by nature. A perfect honeymoon retreat and for those wild at heart.

**FREE WITH 4-NIGHT BOOKINGS or AS A SUPPLEMENT**

- 18+ years of age
- Dinner, bed & breakfast
- Extra length King or 2 twin beds
- En suite bathroom
- Outside shower
- Private deck
- Mosquito net
- Flask & Coffee / tea / hot choc

✦ Subject to weather  
and availability



# BUSH DINING

ALL-INCLUSIVE MEALS + DRINKS

Our chefs prepare delicious, simple and nutritious meals from scratch. Breakfast, lunch and a 3-course dinner is served. Bespoke picnics and snacks on game drives or a special bush BBQ can be prepared at a moment's notice.



THE  
**SALT**  
ROAD™

Cooking on an open fire, or in the fully-equipped kitchen, you'll be able to observe their creative flair, as they prepare sumptuous meals from local and ethically sourced produce.

MAWIMBI chefs are trained by renowned chefs from the SALT Road Restaurant in Waterford, Stellenbosch.

# MAWIMBI ACTIVITIES

2 X ACTIVITIES PER DAY INCLUDED

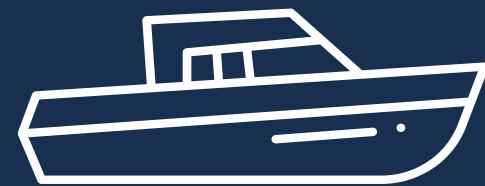
Remote, untamed and wild Kafue National Park requires an armed scout and an expert local guide to accompany our clients. From Game Drives (6-9 people per vehicle or a private vehicle (subject to availability) can be arranged for a supplement.

Additional Activities can be added - we create a bespoke itinerary for our clients.



## Walking Safaris

They say the walking safari was invented in Zambia! With highly experienced guides and amazing wildlife, you quietly observe the smaller wonders of nature.



## River Trips

From the great Kafue River, you've a unique view of the crocs and hippos. Great for birding enthusiasts and those who love being on the water... Don't forget your binocs.



## Game Drives

Game drives with the whole of Kafue available to explore, we have Sunrise, Sunset & Night Drives to choose from. Snacks and drinks provided, with abundant wildlife viewing.



# BESPOKE ITINERARIES



BIRDING SAFARIS



PHOTOGRAPHIC SAFARIS



WELLNESS RETREATS



**Tailormade by MAWIMBI**

On arrival, we will create a bespoke itinerary of activities just for you.

Pre-booking needed for local wellness, photography, painting, yoga or martial art specialists.

# SUSTAINABILITY & IMPACT PROJECTS



## Pledge

- Renewable Energy - Solar
- Water Conservation
- Local Sourcing of products and materials
- Waste Reduction
- Recycling
- Employ local people



## MAWIMBI Foundation

- Engaging with the local Rotary Club in Lusaka
- Empowering communities with small business enterprise
- Chunga Clinic - provision of supplies
- Chunga School - Sponsor education, supplies, training



The MAWIMBI Team is dedicated to delivering an exceptional guest experience, committed to minimising our ecological footprint, benefitting the local communities and inspiring positive change to conserve our natural heritage.



# SUGGESTED TRIPS

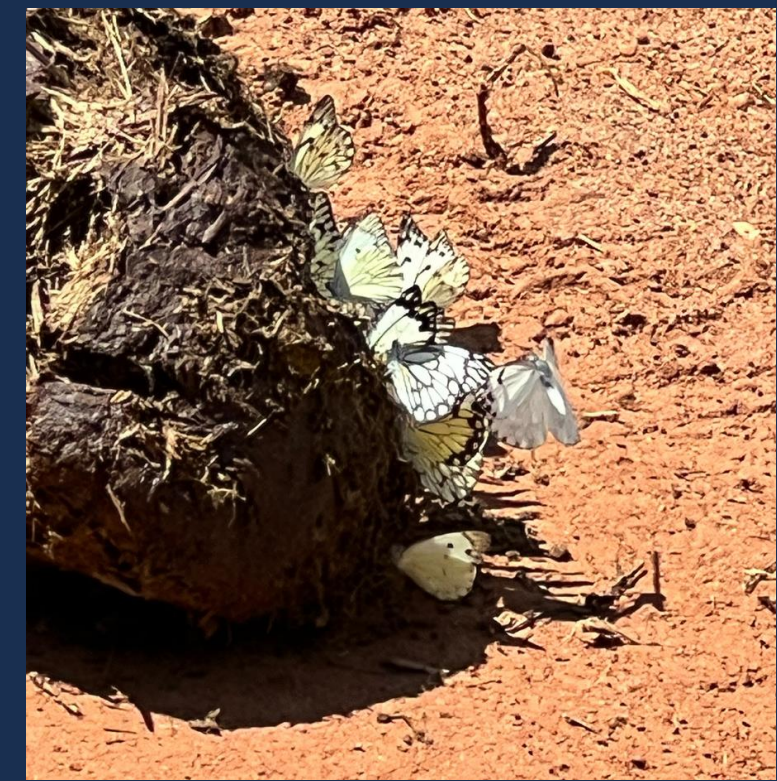
## WILD ZAMBIA

MAWIMBI Bush Camp is for the discerning traveler. Kafue National Park is 22,400 km sq with a Game Management Area that triples its size with no fences. It's a wild treasure trove, relatively untouched - you can go for miles without seeing another vehicle. Wildlife is abundant and curious. Explore Wild Zambia with us.



VIC FALLS /  
LIVINGSTONE ->  
MAWIMBI Bush Camp

Victoria Falls is one of the most impressive waterfalls in the world and forms the border between Zimbabwe & Zambia. Combine this natural wonder with 4 nights at MAWIMBI Bush Camp for a week's retreat.



BUSANGA PLAINS ->  
SHUMBA CAMP->  
MAWIMBI Bush Camp

Kafue National Park is largely unexplored and holds wildlife treasures for those that venture off the beaten track. Combine Busanga Plains & Shumba lodge with Mawimbi in an unforgettable 10 day Safari.

# WILDLIFE SIGHTINGS



# WHY MAWIMBI?

Intimate, wild and exclusive, MAWIMBI is set in a prime location at the heart of Kafue National Park. With access to 22,400 sq kms, it's home to 152 mammal and 515 bird species, and more than 100 reptile, fish and amphibious species. Clients are immersed in wildlife.

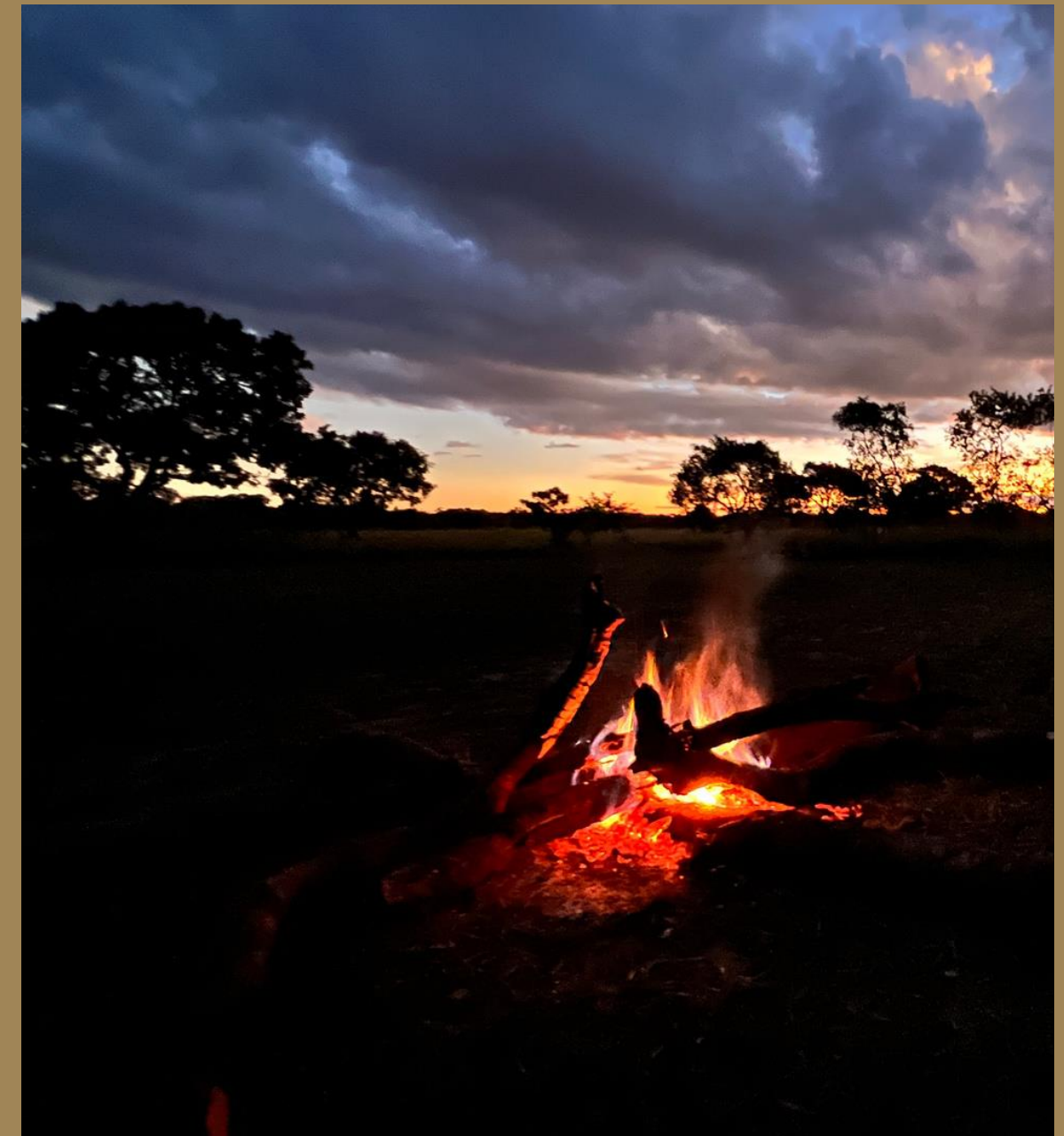
Beautiful tented suites with their own private Kafue River frontage, with Starlink WiFi and home comforts, it's an "Out of Africa" experience, tailored on arrival at our client's request.

Warm friendly staff, excellent customer service and delicious local cuisine.



## RECONNECT IN NATURE

- Switch off from busy lives.
- Celebrate a Honeymoon, Anniversary, Babymoon or milestone Birthday.
- Soul restore.



MAWIMBI is more than a safari... it's a return to the authentic soul of Africa.

[mawimbibushcamp.com](http://mawimbibushcamp.com)

WhatsApp +44(0)77895-10297

[marketing@mawimbibushcamp.com](mailto:marketing@mawimbibushcamp.com)