



*Wedding and function  
packages*  
2025 - 2026

*Gulu Private  
Resort*



*the luxury of being free*



# wedding packages

Elevate your wedding day to new heights at Gulu Private Resort, where romance meets luxury.

Choose from our enchanting venues – the serene beach, timeless chapel, and lavish reception spaces. With our comprehensive package, every detail is seamlessly woven together, ensuring your special day unfolds effortlessly. Embrace the magic of Gulu Private Resort, where love takes center stage, creating memories that last a lifetime.

*beach*



BEACH CEREMONY

4 hrs coverage  
1-hour rehearsal  
coverage  
**Included:**  
bar & staff  
beach permits  
security  
set-up

R12 000-00

*reception*



RECEPTION

ANY ONE VENUE  
6 hours of coverage  
1-hour rehearsal  
coverage  
**Included:**  
basic draping  
fairy lights  
solar power  
bar & staff  
wooden tables &  
chairs  
cutlery  
crockery  
R20 000-00

*chapel*



CEREMONY

ANY ONE VENUE  
2 hours of coverage  
1-hour rehearsal  
coverage  
**Included:**  
generator  
white plastic chairs  
podium  
signing table  
red carpet  
R16 000-00

Love is  
not just something.  
**Love is everything.**





# full wedding packages..



SPARKLING WINE  
PACKAGE

## **TWO VENUES**

8 hours coverage for ceremony & reception

1-hour rehearsal

100 guests

### Included:

draping strips in reception  
draping behind bridal table

fairy lights in reception

generator in chapel

signing table

podium

red carpet

bar staff

wooden tables & chairs

cutlery, crockery

### Excluding:

décor

flowers

set-up & breakdown

additional draping

beverages

still water

draping in chapel

**R34 800.00**



CHAMPAGNE  
PACKAGE

## **THREE VENUES**

10 hours coverage for ceremony & reception

1-hour rehearsal

100 guests

### Included:

draping strips in reception

draping behind bridal table

fairy lights in reception

generator in chapel

signing table

podium

red carpet

bar staff

wooden tables & chairs

cutlery, crockery

### Excluding:

décor

flowers

set-up & breakdown

additional draping

beverages

still water

draping in chapel

**R45 000.00**



INTAMITE  
WEDDINGS

## **SPARKLING WINE**

**PACKAGE - R22 000-00**

**CHAMPAGNE PACKAGE -**

**R29 00-00**

8 /10 hours coverage for ceremony & reception

1-hour rehearsal

**50 guests**

### Included:

draping strips in reception

draping behind bridal table

fairy lights in reception

generator in chapel

signing table

podium

red carpet

bar staff

wooden tables & chairs

cutlery, crockery

### Excluding:

décor

flowers

set-up & breakdown

additional draping

beverages

still water

draping in chapel





even  
packages

# the glass venue

Experience the enchantment of our 180° glass venue, offering panoramic views of the Gulu River and expansive open grass areas. Nestled within a private setting, this venue can hold up to 70 guests and boasts a front-end adorned with lush greenery and a more secluded area at the back. We believe in celebrating special events with the best people.

KIDDIES PARTIES | BABY SHOWERS | BIRTHDAYS | BACHELORETTE | KITCHEN TEAS | HIGH TEAS | ANNIVERSARIES | STAFF PARTIES



## PRICES:

R140-00 PER PERSON (1 - 30 GUESTS)

R130-00 PER PERSON (31 - 45 GUESTS)

R120-00 PER PERSON (46-70 GUESTS)

\*R50-00 PER CHILD for kiddies' events.

*Adults pay 15% less for kiddie's birthday parties*

Kindly note this is a self-catering venue.

Meaning you are allowed to bring your own drinks, food, décor and flowers.

This venue does not come with tables and chairs. Its an open styled venue to decorate as you please.

## Inclusions:

- 1 x white main plate pp
- 1 x white side plate pp
- 1 x silver fork pp
- 1 x silver spoon pp
- 1 x silver knife pp
- Assorted glasses
- Assorted coffee and tea cups
- Solar powered
- 15% Discount apply to your guests for one night stays

## Exclusions:

- Tables & Chairs
- Music
- Décor
- Bar service
- Bar beverages
- Service staff

## Additional items to rent:

- Tables and table cloths
- Chairs and chair covers
- Décor and flowers
- DJ / Sound / Music / Speakers
- Fans (summer)
- Heaters (winter)
- Generator



## Booking Info:

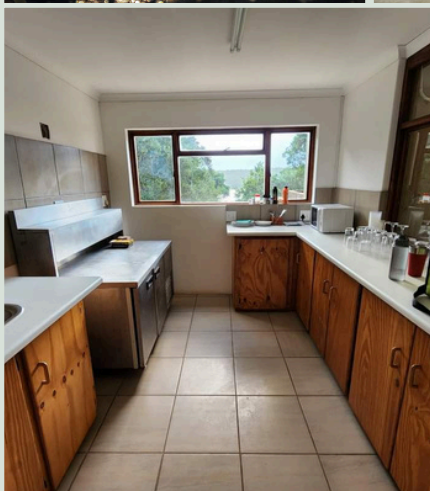
- R450-00 per hour venue hire after the 4 hours of venue hire expires.
- R1 500-00 per hour after venue closes at 18:00
- A R500-00 non refundable deposit applies to secure your date and venue.
- A refundable breakage deposit will be added to the venue quote





# the lapa

A fun, relaxed and spacious braai venue that can have up to 70 guests. Ideal for groups of colleagues, friends, or families wanting a self-catering event. With two braai areas, a kitchen, bathrooms, and a large wooden deck among trees, this private and secluded venue offers a perfect setting for various events.



## Pricing:

R180-00 PER PERSON (1 - 30 GUESTS)  
R160-00 PER PERSON (31 - 45 GUESTS)  
R140-00 PER PERSON (46 - 70 GUESTS)  
\*R50-00 PER CHILD for kiddies' events.

*Adults pay 15% less for kiddies' birthday parties*

## Inclusions:

- 1 x white main plate pp
- 1 x white side plate pp
- 1 x silver fork pp
- 1 x silver spoon pp
- 1 x silver knife pp
- Tables & Chairs
- Assorted glasses
- Assorted coffee and tea cups
- Solar powered
- Wood
- Blitz
- Firestarter
- Bluetooth speaker
- Ice
- 15% Discount apply to your guests for one night stays

## Exclusions:

- Music
- Décor
- Bar service
- Bar beverages
- Service staff

## Additional items to rent:

- Décor and flowers
- Additional Sound / DJ / Music / Speakers
- Generator

## Booking Info

- R550-00 per hour venue hire after the 4 hours of venue hire expires.
- R1 500-00 per hour after venue closes at 18:00
- A R500-00 non refundable deposit applies to secure your date and venue.
- A refundable breakage deposit will be added to the venue quote

*get in touch...*

+27 82 558 0411

info@guluprivateeresor

t.co.za





# main venue

A fun, relaxed and spacious braai venue that can have up to 50 guests. Ideal for groups of colleagues, friends, or families wanting a self-catering event. With two braai areas, a kitchen, bathrooms, and a large wooden deck among trees, this private and secluded venue offers a perfect setting for various events.



## Pricing:

R1 900-00 PER HOUR (1 - 50 GUESTS)  
R2 300-00 PER HOUR (51 - 80 GUESTS)  
R2 900-00 PER PERSON (81 -100 GUESTS)

*KINDLY NOTE THIS IS NOT A CHILD FRIENDLY VENUE*

## Inclusions:

- 1 x white main plate pp
- 1 x white side plate pp
- 1 x silver fork pp
- 1 x silver spoon pp
- 1 x silver knife pp
- Tables & Chairs (Wooden or round tables)
- Tea, coffee & water jugs
- Solar powered
- Ice
- 15% Discount apply to your guests for one night stays
- Basic draping

## Exclusions:

- Steak Knives
- Music / DJ
- Décor
- Bar service
- Bar beverages
- Service staff

## Additional items to rent:

- Décor and flowers
- Additional Sound / DJ / Music / Speakers

## Booking Info

- R550-00 per hour venue hire after the 4 hours of venue hire expires.
- R1 500-00 per hour after venue closes at 18:00
- A R500-00 non refundable deposit applies to secure your date and venue.
- A refundable breakage deposit will be added to the venue quote



get in touch  
+27 82 558 0411  
info@guluprivateresort.co.za







# additional information

## events & weddings

### **General Terms**

Pricing is based on weddings and functions with similar styles and requirements. Gulu Private Resort does not provide flowers or décor. Please refer to our Preferred Service Providers

### **List**

Set-up and breakdown services can be arranged at an additional cost.

### **Guest Count**

Charges are calculated based on the confirmed guest count 10 days prior to the event. Additional guests can be added after this point; however, reductions will not be accepted.

### **Power Supply, Public Holidays, Sundays**

A generator is available for hire on request. The cost will be deducted from the security deposit.

### **Public Holidays & Sundays**

Please note: Events scheduled on Sundays and public holidays will incur additional charges.

### **Catering Options**

Self-catering and external caterers are welcome.

Use of the main kitchen will incur additional charges.

A list of available appliances is provided upon request.

Discounts on the kitchen security deposit are available when using our preferred caterers.

### **Deposits & Refunds**

A refundable venue deposit of R5,000 applies per venue.

An additional refundable kitchen deposit of R8,000 will be charged.

All deposits will be refunded within 7 working days after the event, subject to inspection and terms.

### **Bar Options**

Choose from three different bar styles. Full details are available in the "Just For You" document.

### **Included Venue Items**

Reception area includes wooden tables and chairs, which can be arranged as long or round tables.

Note: Tablecloths and chair covers are not provided.

We recommend using table runners on wooden tables for a natural look.

A selection of additional chairs is available upon request – please see our Chair Selection List.

Chapel: White plastic chairs are included (chair covers not provided).

### **Booking & Confirmation**

Your booking is only confirmed once the deposit is paid, and the signed booking form is received.

Upon booking a wedding, all accommodation will be blocked off for your guests, ensuring added privacy.

All wedding guests receive a 15% discount on a minimum two-night stay.

### **2026 Wedding Offer**

Weddings booked for 2026, with deposits paid in 2025, will qualify for 2025 rates, added extras, and exclusive offers.

Terms & Conditions apply.

Please Note - Prices are subject to change without notice.

2027 wedding bookings opening April 2026

"We encourage all couples to enquire about current specials before finalising their booking — exclusive offers may be available."