

SUSHI THE 3/4 WAY

SOUTH
The Market



POKE BOWLS

Poke ("POH-keh") refers to chunks of raw fish - usually tuna or salmon which is marinated in umami-packed sauces, with sesame seeds, tossed over rice and topped with fresh vegetables such as edamame beans, baby radish, carrot, cucumber, mangetout, avocado & red cabbage.



TOFU (V) - 120	I	TUNA - 145
PANKO PRAWN - 135	I	SALMON - 165

POKE ROLLS

All the deliciousness of a Poke Bowl wrapped in a Nori sheet, crumbed in Panko Crumbs, and fried until crisp.

VEGETARIAN ROLL (V) - 160	
TUNA ROLL - 195	I
SALMON ROLL - 225	

BAO BUN TRIO

Three Fluffy steamed lotus buns, filled with Poke Salad and three different fillings:

SPICY PANKO CHICKEN
ASIAN SESAME BEEF FILLET
CRISPY CALAMARI TENTACLES
145



ABALONE

Abalones are marine molluscs known for their strikingly iridescent, spiral-shaped shells. These shells are often characterised by shimmering colours like blues, greens, and pinks, which make them highly sought after for their aesthetic appeal. Abalones are herbivorous creatures that cling to rocks in coastal areas, using a strong, muscular foot to move and feed on algae. They are known for their resilience, as they withstand the pounding waves and changing tides.

ABALONE CHOWDER - 195

Thick, Hearty and Rich soup, made with Minced Abalone, Cream & Vegetables. Served with fresh Rosemary & Rock-salt Baguette



TRADITIONAL MINCED ABALONE - 175

Abalone Mince in a Creamy Garlic & White Wine sauce, Peppers, Onion and Fennel, served with Savoury Rice and Sourdough Ciabatta



STEAMED WHOLE ABALONE - 295

Three Whole Baby Abalones steamed, served with a Thai broth, Green Vegetables and Angel Hair Noodles

Our Abalone is obtained from Authorised Aqua-cultural Abalone farms under sustainable and responsible farming conditions

34 SUSHI - THE CLASSICS

SASHIMI



TUNA 120 | SEARED TUNA 95 |
SALMON 130 | SEARED SALMON 135

3pc

HANDROLL



AVO & CUCUMBER 60 | PANKO PRAWN 95 | PRAWN 90
I TUNA 85 | SALMON 100 | SMOKED SALMON 120

1pc

ROSES



SALMON (2PC) 95
KUDU VENISON (3PC) 105

FASHION



VEGETARIAN 45 | CRAB 50 | PRAWN 65 |
TUNA 65 | SALMON 75

4pc

MAKI



CUCUMBER 35 | AVOCADO 40 | CRAB 40 |
I PRAWN 50 | TUNA 50 | SALMON 60

4pc

NIGIRI



PRAWN 70 | TUNA 70 | SALMON 80 |
INARI PRAWN 95

2pc

CALIFORNIA



VEGETARIAN 45 | CRAB 50 | PRAWN 65 |
SPICY SALMON 72 | SPICY TUNA 72
TUNA 65 | SALMON 70

4pc

PANKO PRAWN



SERVED WITH SWEET CHILLI SAUCE
4 PC = 95
6 PC = 135

4 or 6pc

CRISPY CALIFORNIA



FRIED CALIFORNIA ROLL, FILLED WITH YOUR
CHOICE OF FILLING, MAYO, CAVIAR
85

4pc

CRISPY FASHION



FRIED FASHION SANDWICHES, YOUR FILLING
CHOICE, MAYO, SWEET CHILLI
85

4pc

34 SOUTH ROLL



PRAWNS, SPRING ONION, PEANUTS, AVO
AND MAYO
65

4pc

RAINBOW ROLLS



SALMON & AVO 90
OR
PICKLED PEPPER, CREAM CHEESE & AVO 70

4pc

34 SUSHI - THE EXCLUSIVE

NIGIRI QUARTET



NIGIRI TOPPED WITH FRESH, SMOKED,
SEARED AND GRAVLAX SALMON
235

FUSION BLAZE



SALON & TUNA ROLLS, FIRE SAUCE, WASABI
MAYO AND CRISPY ONIONS
155

TUNA LUX



SEARED TUNA ROLLS, ROCKET, PISTACHIO
NUTS, PICKLED PEPPERS AND SWEET SOYA
145

NEW AGE SASHIMI



THIN SALMON SASHIMI, POKE SAUCE, AVO,
PICKLED PEPPERS, SUSHI MAYO & CAVIAR
265

PRETZEL CRUNCH



CREAM CHEESE & PANKO PRAWN ROLL,
TOPPED WITH CRISPY CRAB & PRETZELS
105

SPICY PRAWN TANGO



VEGETARIAN CALIFORNIA ROLLS, PANKO
FRIED PRAWNS & MEXICAN MANGO SALSA
125

BLACK PEARL



PANKO & CHARCOAL FRIED OYSTERS, RED
RAINBOW, WASABI MAYO
175

CALAMARI CRISP



CREAM CHEESE ROLL, FRIED CALAMARI
TENTACLES, FIRE SAUCE, SWEET SOYA
95

CANAPE



PANKO FRIED SUSHI RICE, CREAM CHEESE,
PEPPADEW, AVO, SMOKED SALMON
165

FIREBALLS



VEG CALIFORNIA, FRIED CREAM CHEESE
BALLS & FIRE SAUCE
VEGETARIAN 165 | SMOKED SALMON 210

CRAB CRUNCH



CRISPY FRIED CRAB, AVO, KEWPIE MAYO,
DRIZZLED WITH SWEET SOYA
60

GREEN BEAN FUTOMAKI



TEMPURA GREEN BEANS, FRIED FUTOMAKI,
SPICY MAYO, SWEET POTATO CRISP
95

34 SUSHI - THE SPECIALITY



BUTTERFLY
PANKO

4pc

BUTTERFLIED PANKO FRIED PRAWNS, ON
SALMON CALIFORNIA & SWEET CHILLI MAYO
150



EDAMAME

75

GREEN SOY BEANS, STEAMED
WITH SWEET CHILLI AND COARSE SALT



SHRIMP
TEMPURA

4pc

CALIFORNIA ROLL, TOPPED WITH CREAMY
SHRIMP TEMPURA. SPICY SALMON OR TUNA
110



ROCKET ROLL

4pc

SALMON, ROCKET AND AVO, TOPPED WITH
ROCKET AND KEWPIE MAYO
65



JOJO SUPER

4pc

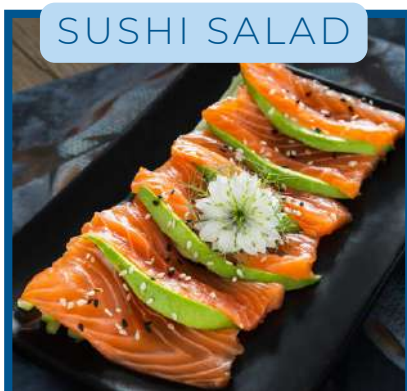
RAINBOW ROLL WITH SWEET SOYA, SPRING
ONION, 7 SPICE, KEWPIE MAYO & CAVIAR
110



SEARED TUNA
ROLL

4pc

SEARED TUNA, AVO, AND PEPPADEW
65



SUSHI SALAD

215

THIN SLICES OF SALMON & AVO, SERVED
WITH SWEET CHILLI SAUCE



PANKO ROLL

4pc

PANKO PRAWN, AVO, CUCUMBER AND
SWEET CHILLI SAUCE
80



CREAM CHEESE
ROLL

4pc

AVO, CREAM CHEESE & PEPPADEW. CHOOSE
SALMON, PRAWN OR SMOKED SALMON
85



MINI SUSHI

8pc

CRISPY PRAWN CALIFORNIA & PRAWN
CALIFORNIA TOPPED WITH SHRIMP TEMPURA
170



VEGETARIAN

9pc

VEGETARIAN CALIFORNIA, GREEN RAINBOW,
AVO & CUCUMBER HANDROLL
145



RAINBOW
SANDWICH

9pc

MINI SANDWICHES FILLED AND TOPPED WITH
SALMON, AVO, MAYO & CAVIAR
220

34 SUSHI - PLATTERS



TIGER

9pc

SHRIMP TEMPURA, PRAWN HANDROLL,
CRISPY PRAWN CALIFORNIA
245



NIGIRI TIME

10pc

A TASTE OF ALL OUR NIGIRI'S:
SALMON, TUNA, INARI, PRAWN, PEPPER
295



MATSU

11pc

SHRIMP TEMPURA, PRAWN NIGIRI, SALMON
ROSE, SALMON RAINBOW
395



KURIMO

14 pc

CRAB CRUNCH, CREAM CHEESE CALIFORNIA,
SALMON NIGIRI, SEARED TUNA ROLL
270



WAKAME

16pc

SALMON FASHION, SALMON ROSES, CRAB
CALIFORNIA, TUNA MAKI
295



THE 34

16pc

AVOCADO MAKI, SALMON FASHION, SALMON
NIGIRI, SALMON ROSE, SALMON RAINBOW
325



HANA

16pc

SALMON MAKI, TUNA MAKI, AVO MAKI,
SALMON CALIFORNIA
205



SALMON

19pc

SALMON CALIFORNIA, SALMON ROSES,
SALMON SASHIMI, SALMON NIGIRI
545



GINGER

20pc

SALMON MAKI, SALMON RAINBOW, CRAB
CALIFORNIA
305



EAGLES

30pc

SALMON FASHION, RAINBOW ROLLS, CRISPY
PRAWN, SALMON & TUNA & PRAWN NIGIRI
615



DELUXE

SALMON FASHION, SALMON NIGIRI, PRAWN
NIGIRI, TUNA NIGIRI, SALMON ROSES, TUNA
SASHIMI, SALMON SASHIMI, CRISPY CRAB
CALIFORNIA, SALMON CALIFORNIA, TUNA
MAKI, RAINBOW SANDWICHES, INARI PRAWN
1250 →

EXTRAS

FIRE SAUCE 35 | SUSHI MAYO 25 | WASABI 20
PICKLED GINGER 20 | SUSHI RICE 20 | CAVIAR 55
SWEET CHILLI/SOYA 30 | POKE SAUCE 30



67pc